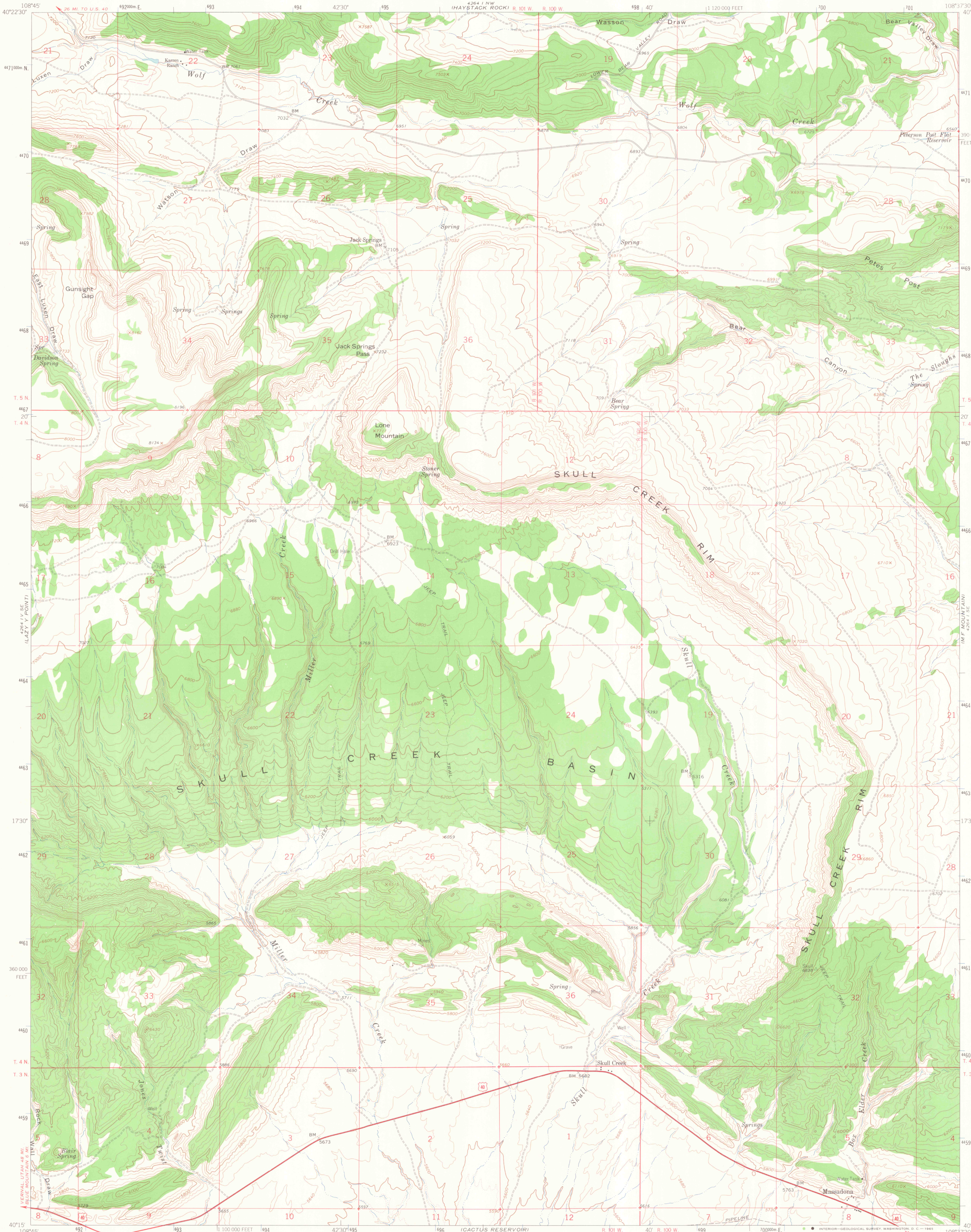


UNITED STATES  
DEPARTMENT OF THE INTERIOR  
GEOLOGICAL SURVEY

SKULL CREEK QUADRANGLE  
COLORADO—MOFFAT CO.  
7.5 MINUTE SERIES (TOPOGRAPHIC)



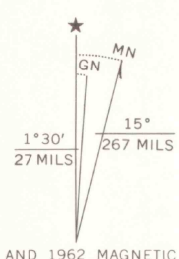
Mapped, edited, and published by the Geological Survey

Control by USGS and USC&GS

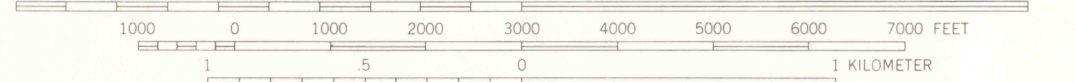
Topography by photogrammetric methods from aerial  
photographs taken 1961. Field checked 1962

Polyconic projection. 1927 North American datum  
10,000-foot grid based on Colorado coordinate system, north zone  
1000-meter Universal Transverse Mercator grid ticks,  
zone 12, shown in blue

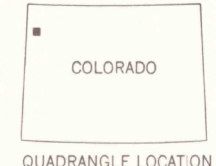
Fine red dashed lines indicate selected fence lines



SCALE 1:24,000



CONTOUR INTERVAL 40 FEET  
DOTTED LINES REPRESENT 20 FOOT CONTOURS  
DATUM IS MEAN SEA LEVEL



ROAD CLASSIFICATION  
Heavy-duty — Light-duty  
Unimproved dirt  
U.S. Route

U. S. GOVT  
DOCUMENTS

XX

ARTHUR LAKES LIBRARY  
COLORADO SCHOOL OF MINES

SKULL CREEK, COLO.  
N4015—W10837.5/7.5

1962

AMS 4264 1 SW—SERIES V877

THIS MAP COMPLIES WITH NATIONAL MAP ACCURACY STANDARDS  
FOR SALE BY U.S. GEOLOGICAL SURVEY, DENVER 25, COLORADO OR WASHINGTON 25, D.C.  
A FOLDER DESCRIBING TOPOGRAPHIC MAPS AND SYMBOLS IS AVAILABLE ON REQUEST

OFFICE COPY