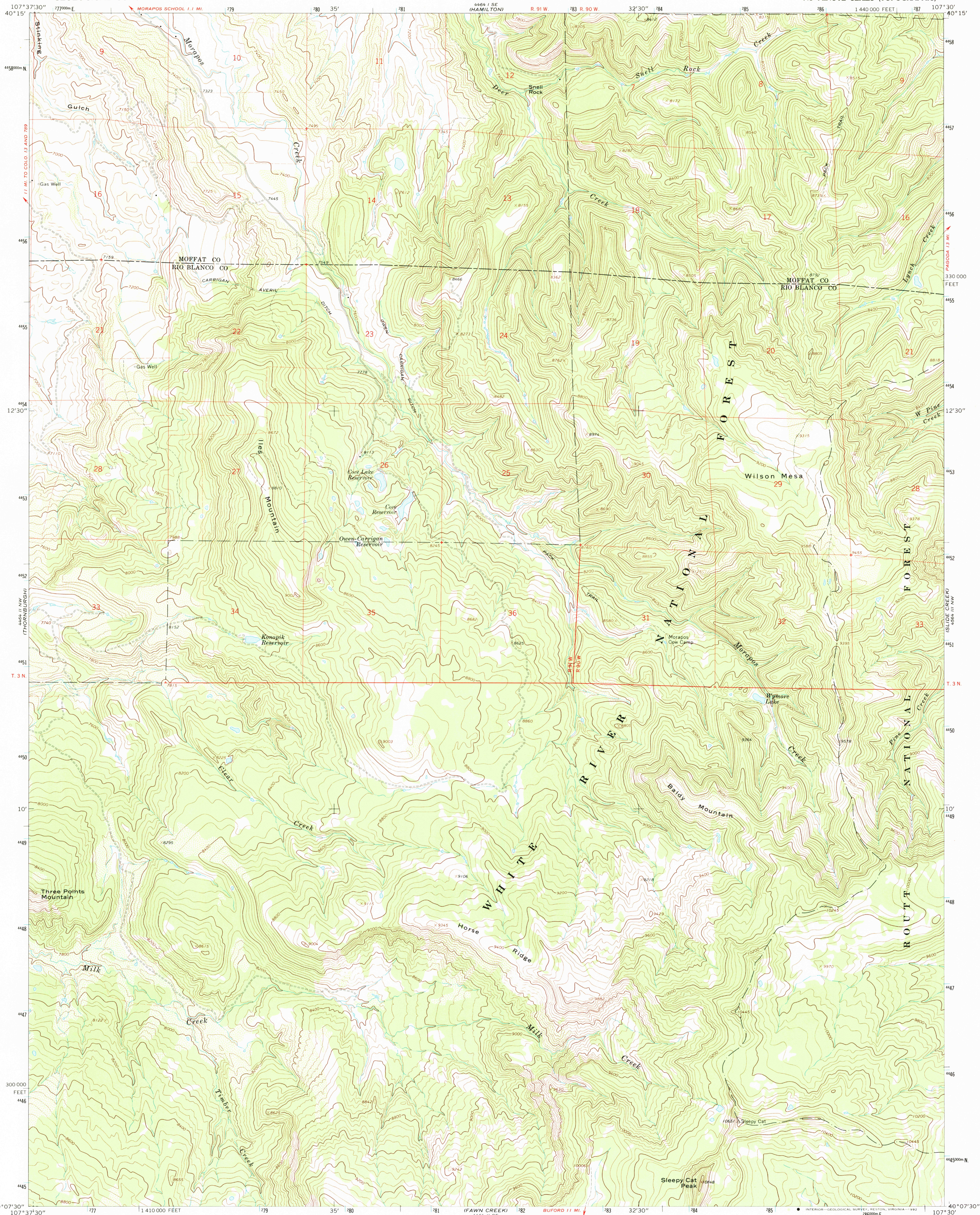


UNITED STATES
DEPARTMENT OF THE INTERIOR
GEOLOGICAL SURVEY

SLEEPY CAT PEAK QUADRANGLE
COLORADO
7.5 MINUTE SERIES (TOPOGRAPHIC)



Mapped, edited, and published by the Geological Survey

Control by USGS and NOS/NOAA

Topography by photogrammetric methods from aerial photographs taken 1962. Field checked 1966

Polyconic projection. 1927 North American Datum

10,000-foot grid based on Colorado coordinate system,

north zone

1000-meter Universal Transverse Mercator grid ticks, zone 13,

shown in blue

The difference between 1927 North American Datum and North

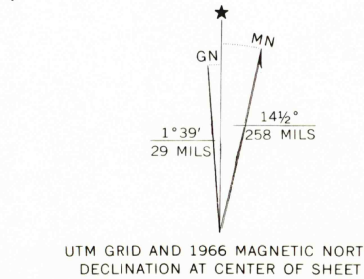
American Datum of 1983 (NAD 83) for 7.5 minute intersections is

given in USGS Bulletin 1875. The NAD 83 is shown by dashed

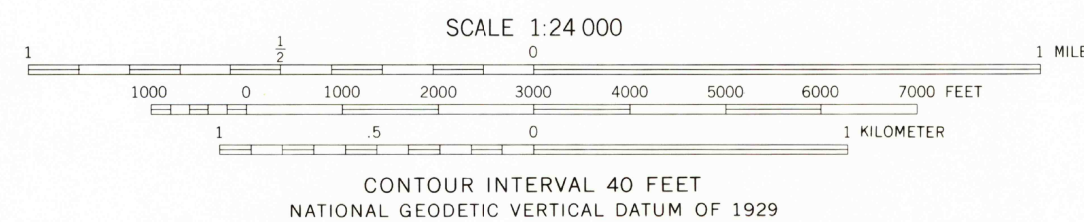
corner ticks

Fine red dashed lines indicate selected fence lines

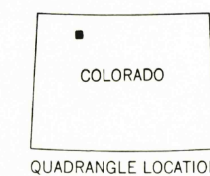
Where omitted, land lines have not been established



UTM GRID AND 1966 MAGNETIC NORTH
DECLINATION AT CENTER OF SHEET



THIS MAP COMPLIES WITH NATIONAL MAP ACCURACY STANDARDS
FOR SALE BY U. S. GEOLOGICAL SURVEY, DENVER, COLORADO 80225, OR RESTON, VIRGINIA 22092
A FOLDER DESCRIBING TOPOGRAPHIC MAPS AND SYMBOLS IS AVAILABLE ON REQUEST



QUADRANGLE LOCATION

ROAD CLASSIFICATION
Light-duty ————— Unimproved dirt —————

SLEEPY CAT PEAK, COLO.
40107-B5-TF-024

1966

DMA 4464 II NE-SERIES V877

