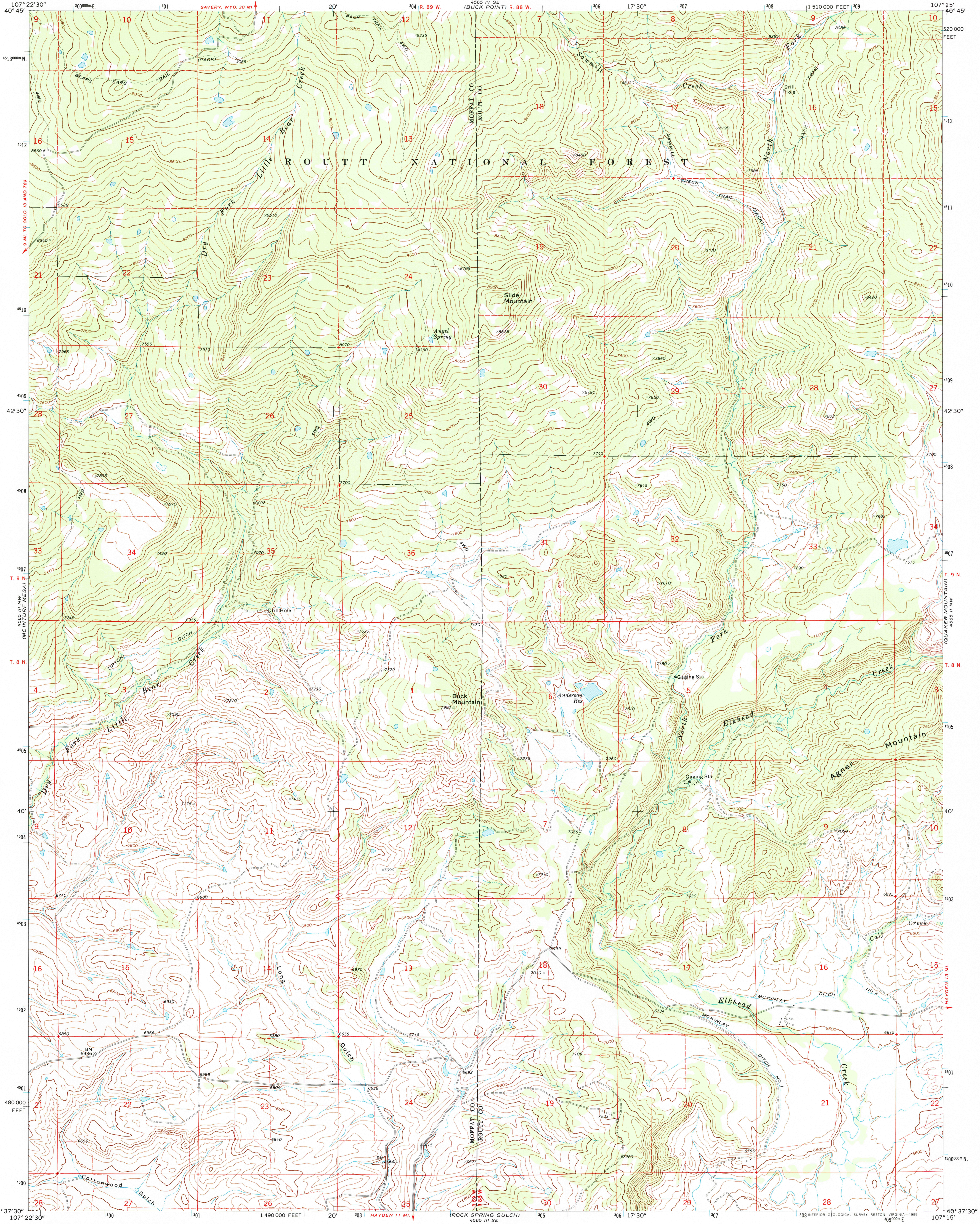
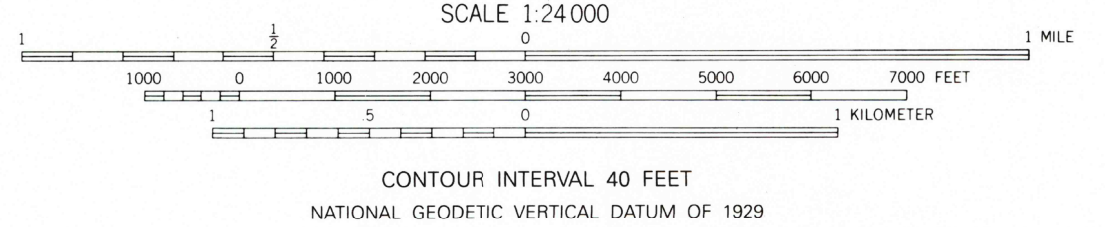
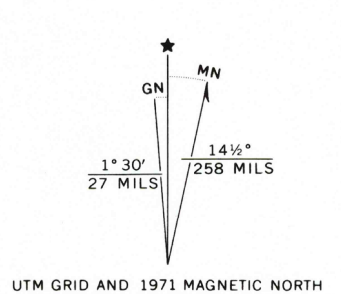


UNITED STATES
DEPARTMENT OF THE INTERIOR
GEOLOGICAL SURVEY

SLIDE MOUNTAIN QUADRANGLE
COLORADO
7.5 MINUTE SERIES (TOPOGRAPHIC)



Produced by the United States Geological Survey
Control by USGS and NOS/NOAA
Compiled from aerial photographs taken 1970. Field checked 1971
North American Datum of 1927 (NAD 27). Projection and
10,000-foot ticks: Colorado Coordinate System, north zone
(Lambert Conformal Conic)
Blue 1000-meter Universal Transverse Mercator ticks, zone 13
North American Datum of 1983 (NAD 83) is shown by dashed
corner ticks. The values of the shift between NAD 27 and NAD 83
for 7.5-minute intersections are obtainable from National Geodetic
Survey NADCON software.
There may be private inholdings within the boundaries of the
National or State reservations shown on this map.
Fine red dashed lines indicate selected fence lines.



THIS MAP COMPLIES WITH NATIONAL MAP ACCURACY STANDARDS
FOR SALE BY U.S. GEOLOGICAL SURVEY
DENVER, COLORADO 80225, OR RESTON, VIRGINIA 22092
A FOLDER DESCRIBING TOPOGRAPHIC MAPS AND SYMBOLS IS AVAILABLE ON REQUEST

Map photinspected 1973
No major culture or drainage changes observed

ROAD CLASSIFICATION	
Primary highway, hard surface	Light-duty road, hard or improved surface
Secondary highway, hard surface	Unimproved road
Interstate Route	U. S. Route
	State Route



SLIDE MOUNTAIN, CO
40107-F3-TF-024

1971
PHOTOINSPECTED 1973
DMA 4565 III NE-SERIES V877

