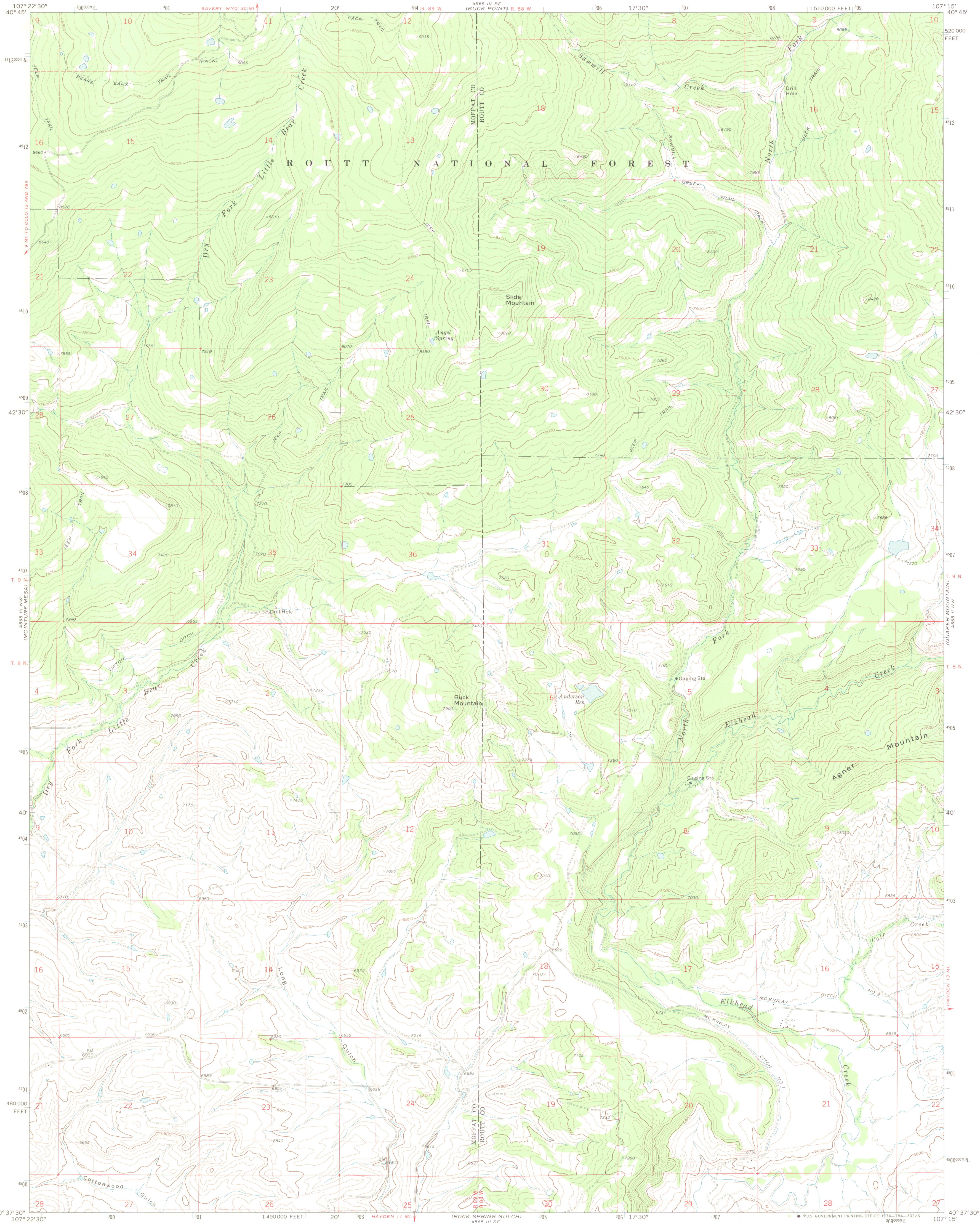
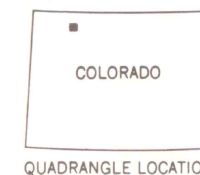
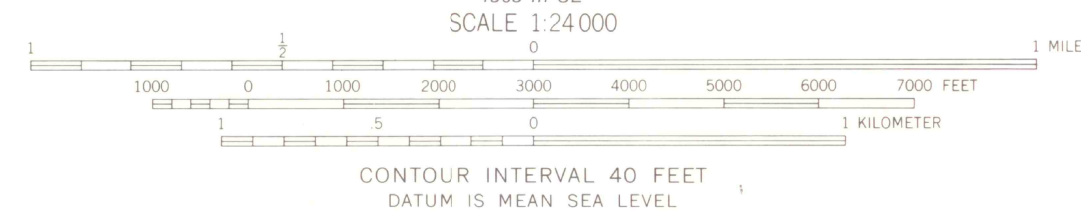
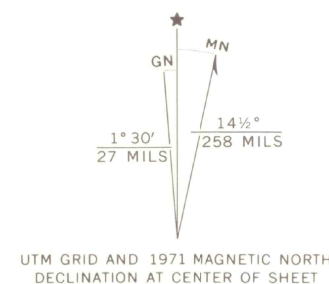


UNITED STATES  
DEPARTMENT OF THE INTERIOR  
GEOLOGICAL SURVEY

SLIDE MOUNTAIN QUADRANGLE  
COLORADO  
7.5 MINUTE SERIES (TOPOGRAPHIC)  
NE 1/4 ELKHEAD CREEK 15' QUADRANGLE



Mapped, edited, and published by the Geological Survey  
Control by USGS and USC&GS  
Topography by photogrammetric methods from aerial  
photographs taken 1970. Field checked 1971  
Projection and 10,000-foot grid ticks: Colorado  
coordinate system, north zone (Lambert conformal conic)  
1000-meter Universal Transverse Mercator grid ticks,  
zone 13, shown in blue. 1927 North American datum  
Fine red dashed lines indicate selected fence lines



ROAD CLASSIFICATION  
Primary highway, hard surface  
Secondary highway, hard surface  
Unimproved road  
Interstate Route  
U. S. Route  
State Route

SLIDE MOUNTAIN, COLO.  
NE 1/4 ELKHEAD CREEK 15' QUADRANGLE  
N4037.5-W10715/7.5

1971

AMS 4565 III NE—SERIES V877

THIS MAP COMPLIES WITH NATIONAL MAP ACCURACY STANDARDS  
FOR SALE BY U. S. GEOLOGICAL SURVEY, DENVER, COLORADO 80225, OR WASHINGTON, D. C. 20242  
A FOLDER DESCRIBING TOPOGRAPHIC MAPS AND SYMBOLS IS AVAILABLE ON REQUEST

LIBRARY USE ONLY