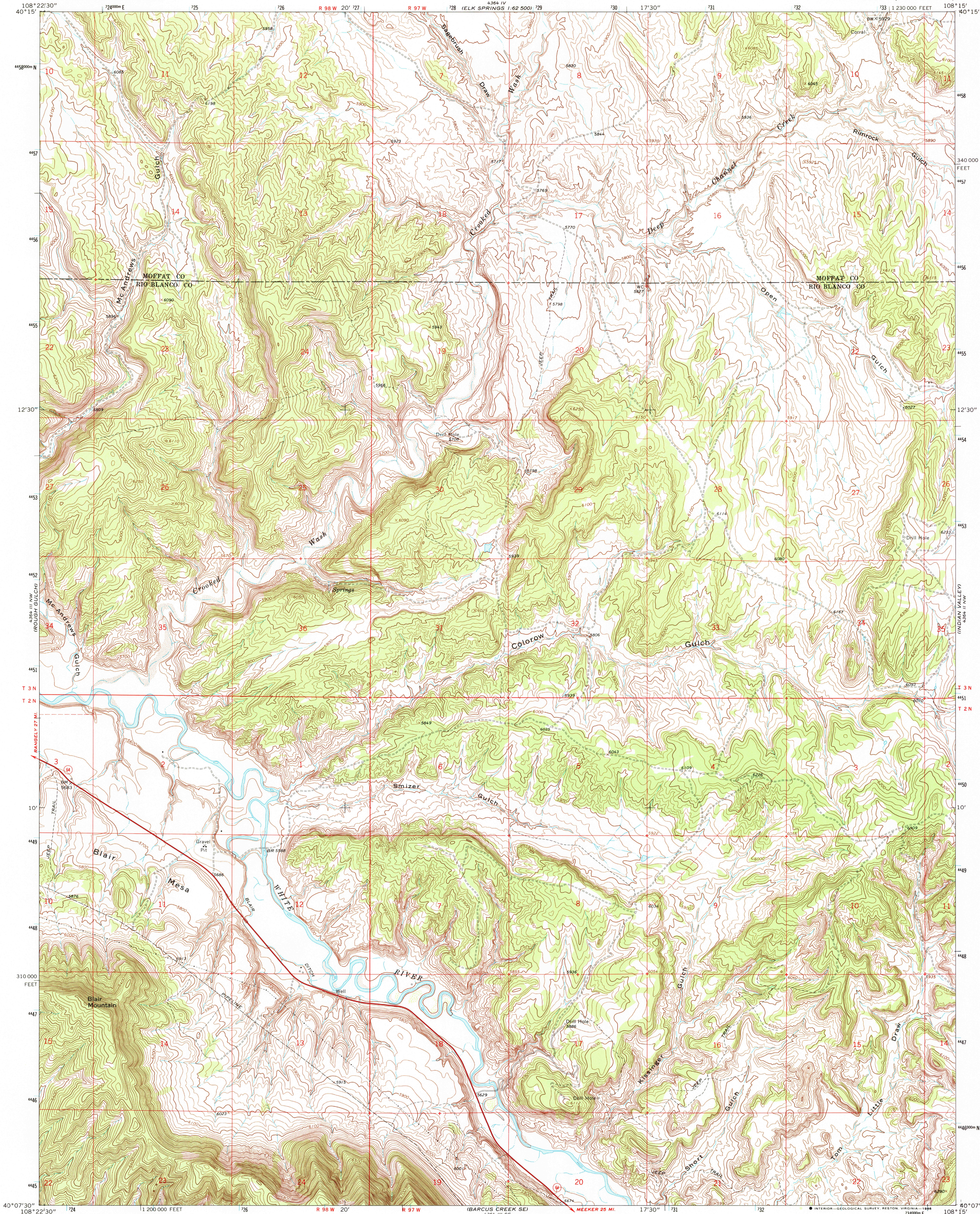


UNITED STATES
DEPARTMENT OF THE INTERIOR
GEOLOGICAL SURVEY

SMIZER GULCH QUADRANGLE
COLORADO
7.5 MINUTE SERIES (TOPOGRAPHIC)



Mapped, edited, and published by the Geological Survey

Control by USGS and USC&GS

Topography by photogrammetric methods from aerial

photographs taken 1964. Field checked 1966

Polyconic projection. 1927 North American datum

10,000-foot grid based on Colorado coordinate system,

north zone

1000-meter Universal Transverse Mercator grid ticks,

zone 12, shown in blue

Fine red dashed lines indicate selected fence lines

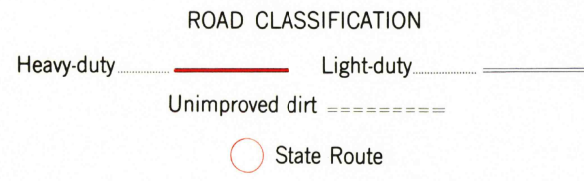
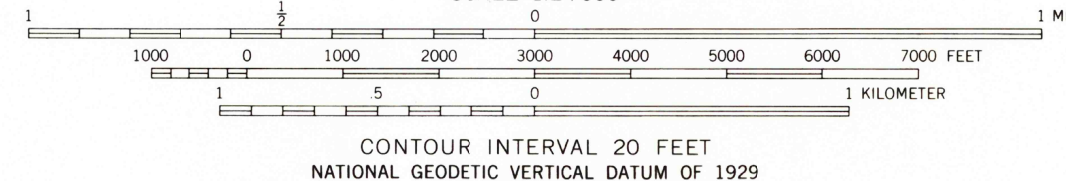
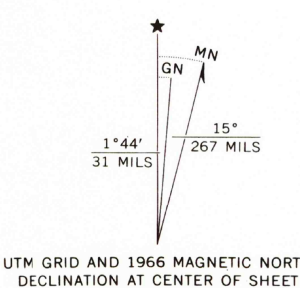
To place on the predicted North American Datum 1983

move the projection lines 7 meters north and

56 meters east as shown by dashed corner ticks

Map photoinspected 1973

No major culture or drainage changes observed



SMIZER GULCH, COLO.
40108-B3-TF-024

1966

PHOTOINSPECTED 1973
DMA 4364 III NE-SERIES V877

