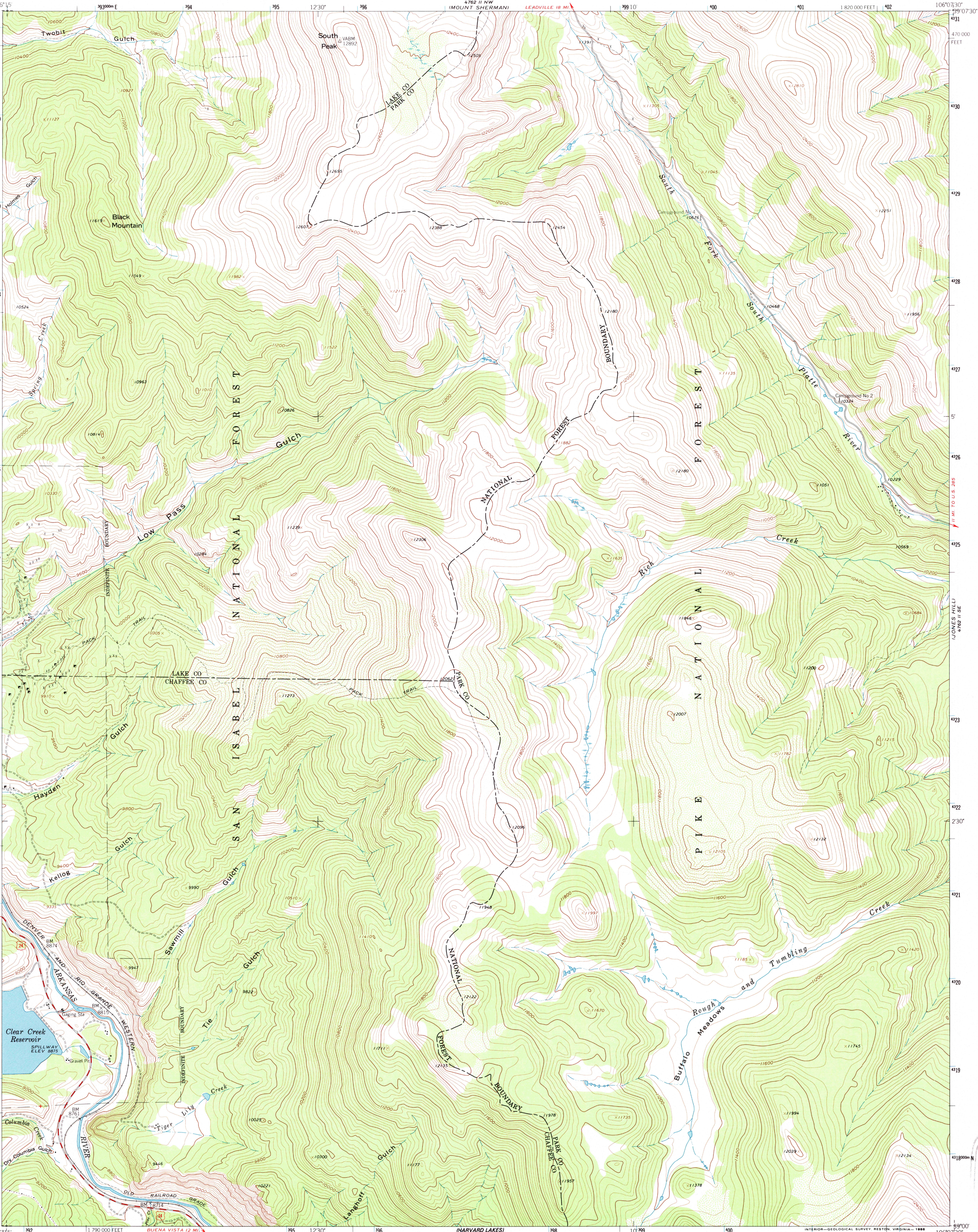


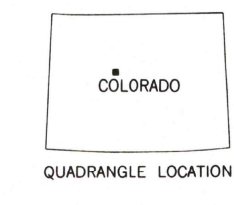
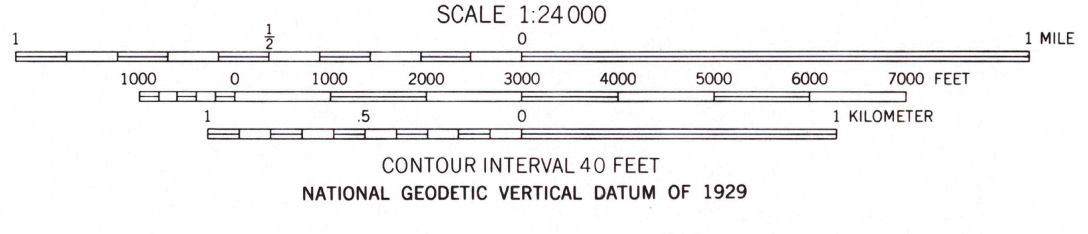
UNITED STATES
DEPARTMENT OF THE INTERIOR
GEOLOGICAL SURVEY

SOUTH PEAK QUADRANGLE
COLORADO
7.5 MINUTE SERIES (TOPOGRAPHIC)



Mapped, edited, and published by the Geological Survey
Control by USGS and USCGS
Topography by photogrammetric methods from aerial
photographs taken 1956. Field checked 1961
Polyconic projection. 1927 North American Datum
10,000-foot grid based on Colorado coordinate system, central zone
1000-meter Universal Transverse Mercator grid ticks,
zone 13, shown in blue
Land lines are omitted because of insufficient data
All recovered corners are shown
To place on the predicted North American Datum 1983
move the projection lines 5 meters north and
51 meters east as shown by dashed corner ticks
There may be private inholdings within the boundaries of
the National or State reservations shown on this map

Map photoinspected 1979
No major culture or drainage changes observed



ROAD CLASSIFICATION
Medium-duty ——— Light-duty ———
Unimproved dirt ———
U.S. Route

SOUTH PEAK, COLO.
39106-A2-TF-024
1961
PHOTOINSPECTED 1979
DMA 4762 II SW-SERIES V677

APR 30 1980
REC'D FILE COPY

ISBN 0-607-12864-X
9 780607 128642