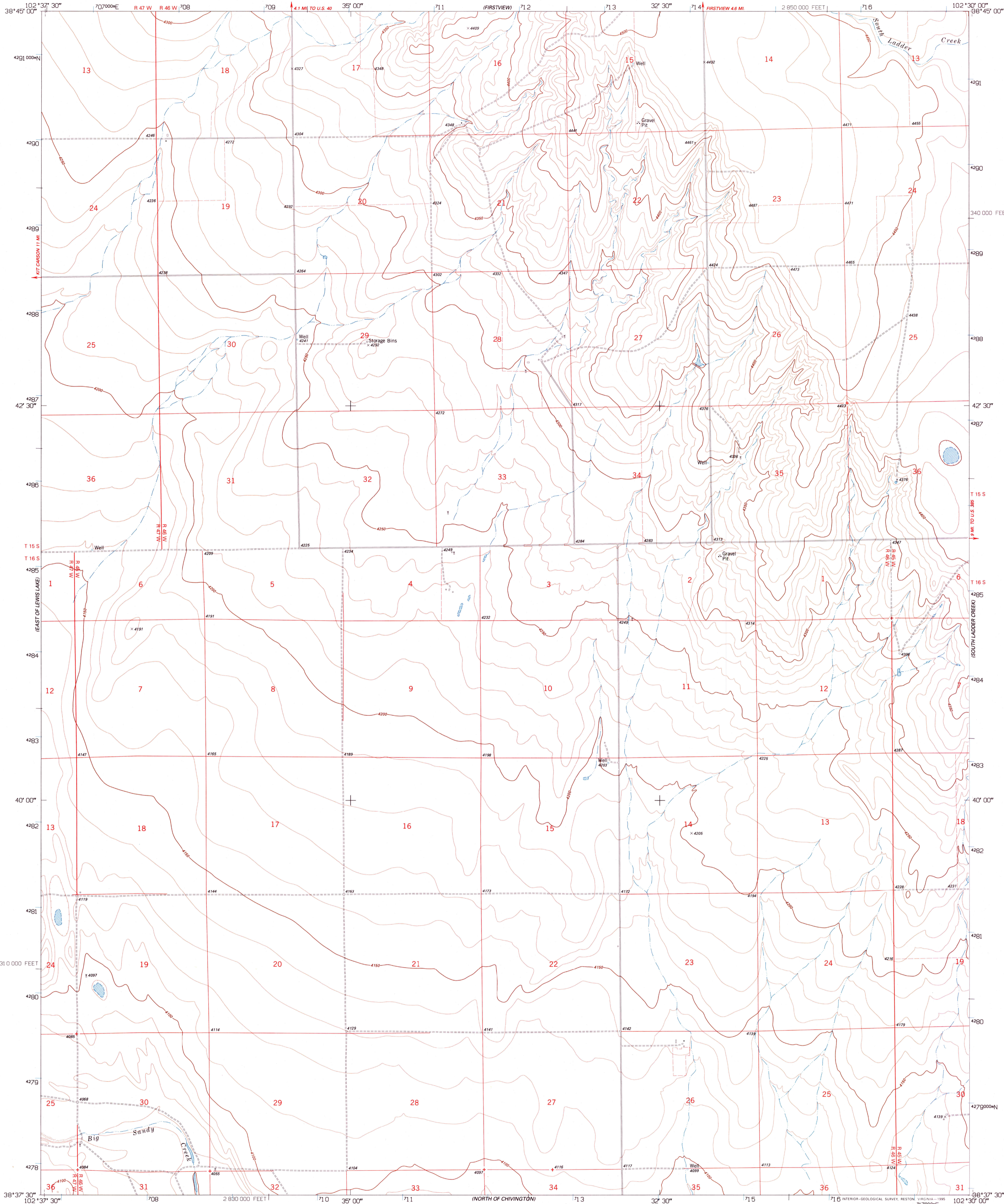
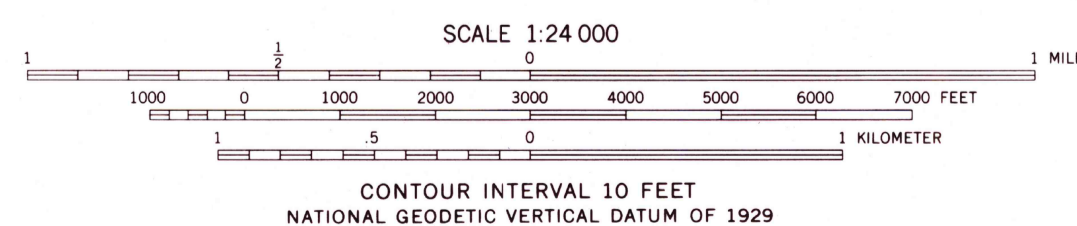
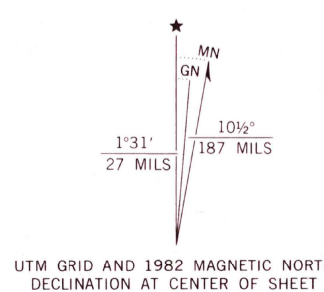


UNITED STATES  
DEPARTMENT OF THE INTERIOR  
GEOLOGICAL SURVEY

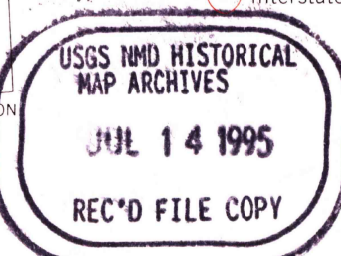
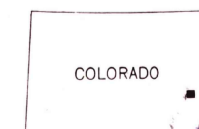
SOUTH OF FIRSTVIEW QUADRANGLE  
COLORADO-CHEYENNE CO.  
7.5 MINUTE SERIES (TOPOGRAPHIC)  
(FORMERLY KIT CARSON 4 NE)



Produced by the United States Geological Survey  
Control by USGS and NOS/NOAA  
Compiled from aerial photographs taken 1975. Field checked 1976  
Map edited 1982  
North American Datum of 1927 (NAD 27). Projection and  
10000-foot ticks: Colorado Coordinate System, central zone  
(Lambert Conformal Conic)  
Blue 1000-meter Universal Transverse Mercator ticks, zone 13  
North American Datum of 1983 (NAD 83) is shown by dashed  
corner ticks. The values of the shift between NAD 27 and NAD 83  
for 7.5-minute intersections are obtainable from National Geodetic  
Survey NADCON software  
Fine red dashed lines indicate selected fence lines



THIS MAP COMPLIES WITH NATIONAL MAP ACCURACY STANDARDS  
FOR SALE BY U. S. GEOLOGICAL SURVEY, DENVER, COLORADO 80225, OR RESTON, VIRGINIA 22092  
A FOLDER DESCRIBING TOPOGRAPHIC MAPS AND SYMBOLS IS AVAILABLE ON REQUEST



ROAD CLASSIFICATION  
Primary highway, hard surface  
Secondary highway, hard surface  
Unimproved road  
Light-duty road, hard or improved surface  
Interstate Route  
U. S. Route  
State Route

SOUTH OF FIRSTVIEW, CO  
(FORMERLY KIT CARSON 4 NE)  
38102-F5-TF-024  
1982  
DMA 5461 II NE-SERIES V877

