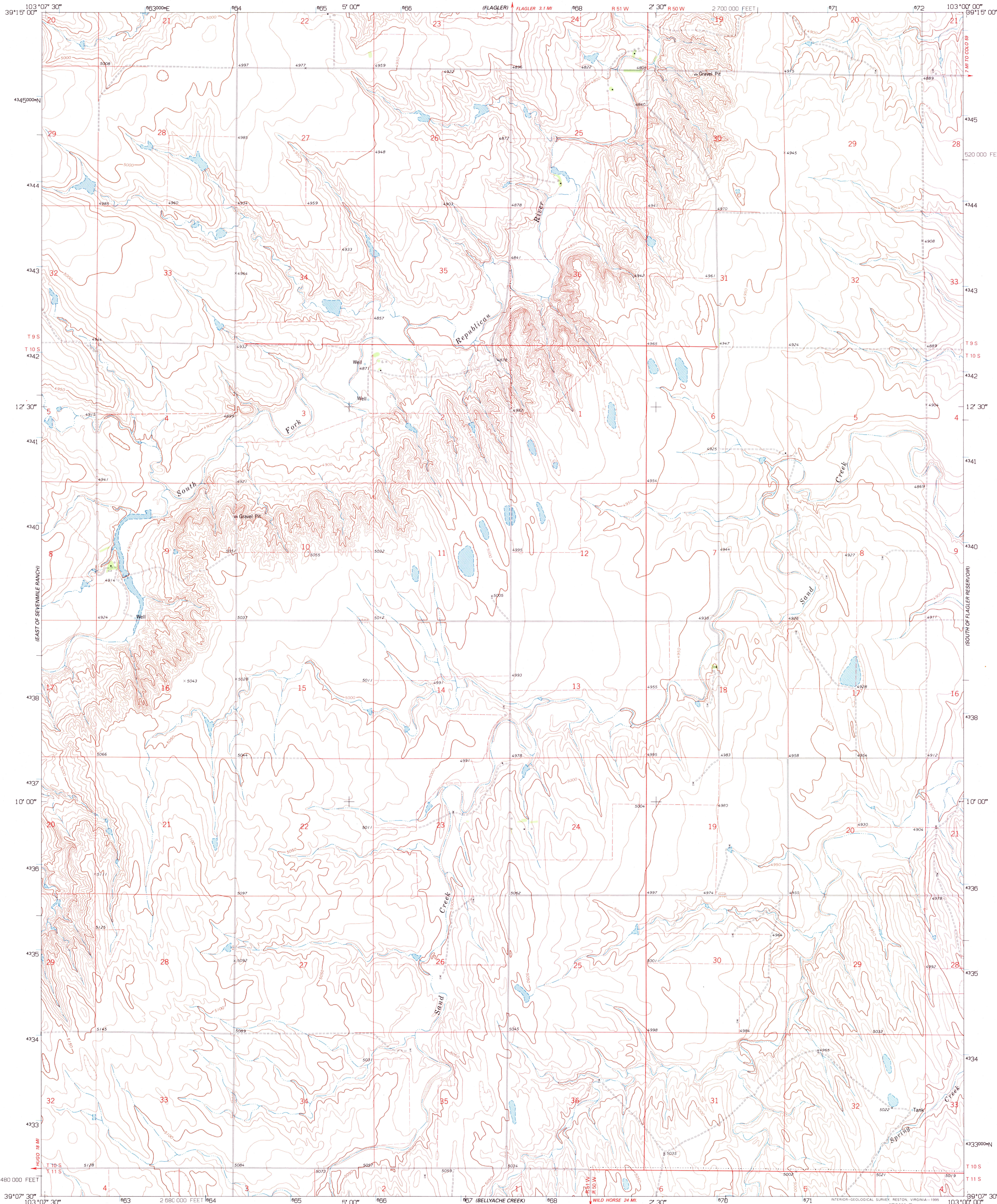
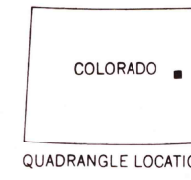
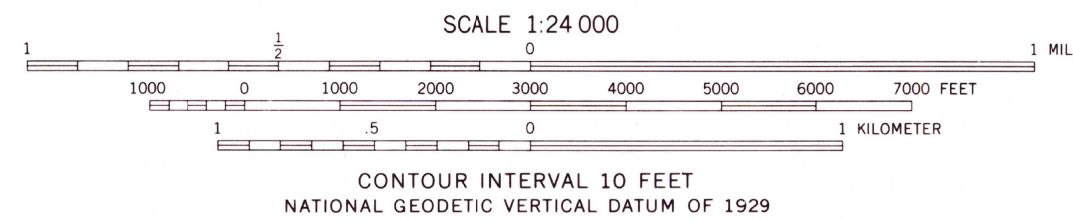
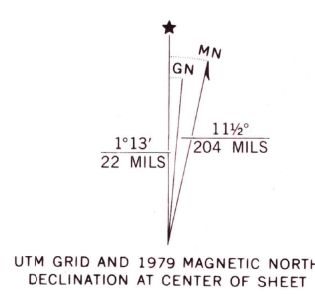


UNITED STATES
DEPARTMENT OF THE INTERIOR
GEOLOGICAL SURVEY

SOUTH OF FLAGLER QUADRANGLE
COLORADO-KIT CARSON CO.
7.5 MINUTE SERIES (TOPOGRAPHIC)
(FORMERLY HUGO 4 NE)



Produced by the United States Geological Survey
Control by USGS and NOS/NOAA
Compiled from aerial photographs taken 1973. Field checked 1975
Map edited 1979
North American Datum of 1927 (NAD 27). Projection and
10 000-foot ticks: Colorado Coordinate System, central zone
(Lambert Conformal Conic)
Blue 1000-meter Universal Transverse Mercator ticks, zone 13
North American Datum of 1983 (NAD 83) is shown by dashed
corner ticks. The values of the shift between NAD 27 and NAD 83
for 7.5-minute intersections are obtainable from National Geodetic
Survey NADCON software
Fine red dashed lines indicate selected fence lines



ROAD CLASSIFICATION
Primary highway,
hard surface
Secondary highway,
hard surface
Light-duty road, hard or
improved surface
Unimproved road
Interstate Route
U. S. Route
State Route

SOUTH OF FLAGLER, CO
(FORMERLY HUGO 4 NE)
39103-B1-TF-024

JUL 31 1995
REC'D FILE COPY

1979
DMA 5362 II NE-SERIES V877

THIS MAP COMPLIES WITH NATIONAL MAP ACCURACY STANDARDS
FOR SALE BY U. S. GEOLOGICAL SURVEY, DENVER, COLORADO 80225, OR RESTON, VIRGINIA 22092
A FOLDER DESCRIBING TOPOGRAPHIC MAPS AND SYMBOLS IS AVAILABLE ON REQUEST

