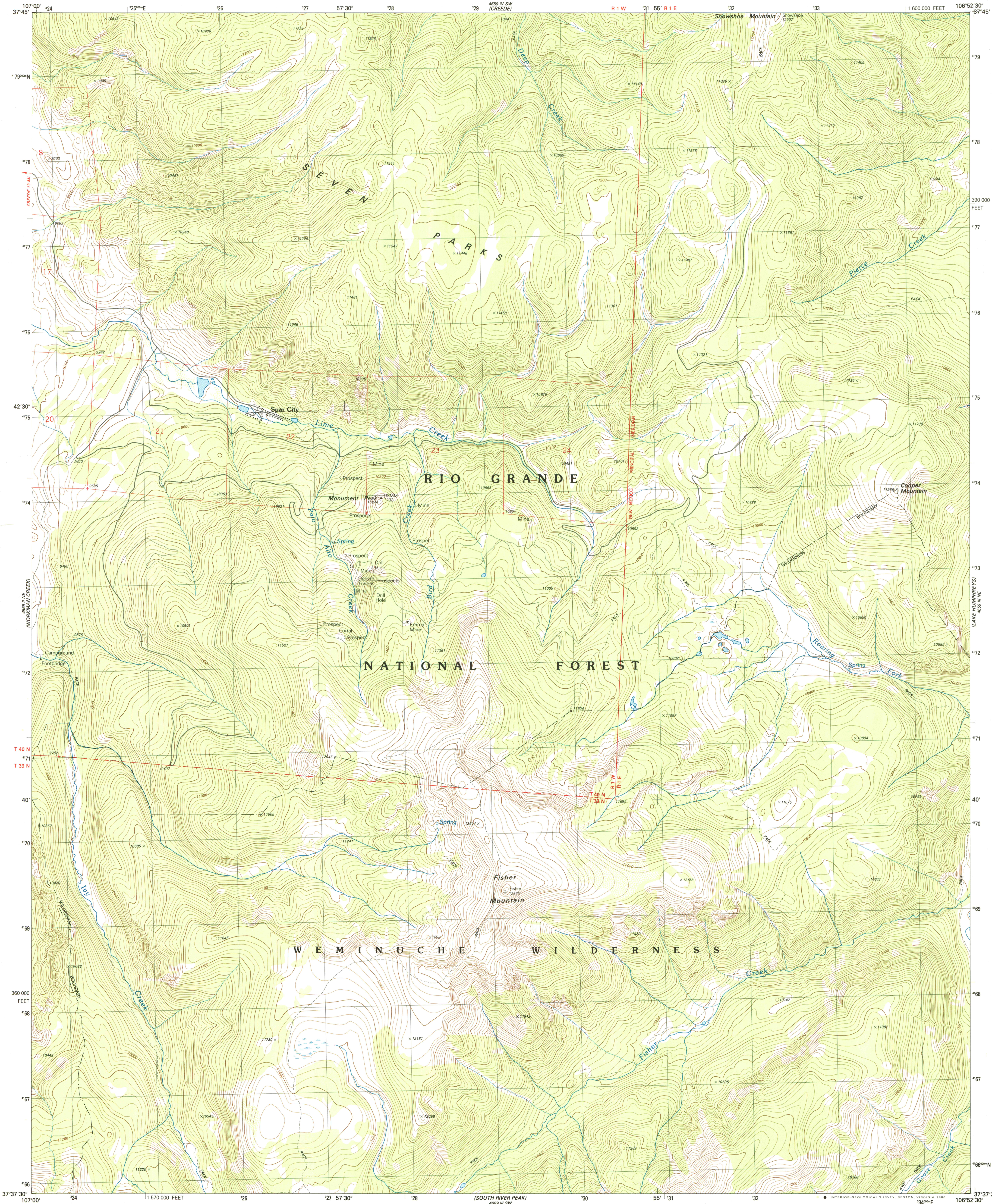


UNITED STATES
DEPARTMENT OF THE INTERIOR
GEOLOGICAL SURVEY

SPAR CITY QUADRANGLE
COLORADO-MINERAL CO.
7.5 MINUTE SERIES (TOPOGRAPHIC)
NW/4 SPAR CITY 15' QUADRANGLE



Produced by the United States Geological Survey

Control by USGS and NOS/NOAA

Compiled by photogrammetric methods from aerial photographs taken 1981. Field checked 1982. Map edited 1986

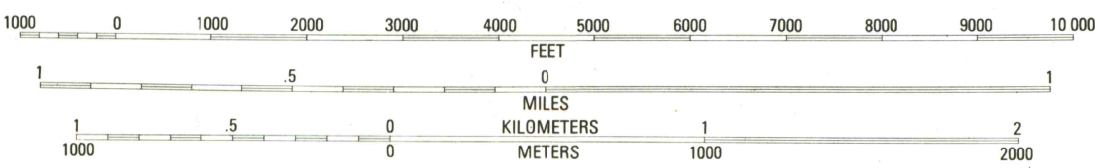
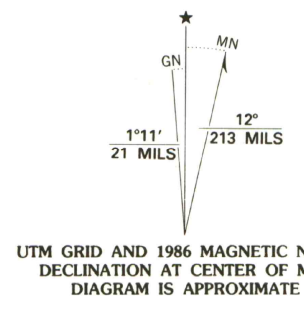
Projection and 10,000-foot grid ticks: Colorado coordinate system, south zone (Lambert conformal conic)

1000-meter Universal Transverse Mercator grid, zone 13 1927 North American Datum

To place on the predicted North American Datum 1983 move the projection lines 3 meters north and 53 meters east as shown by dashed corner ticks

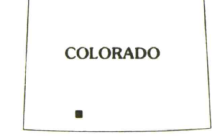
Where omitted, land lines have not been established or are not shown because of insufficient data

There may be private inholdings within the boundaries of the National or State reservations shown on this map



CONTOUR INTERVAL 40 FEET
NATIONAL GEODETIC VERTICAL DATUM OF 1929

THIS MAP COMPLIES WITH NATIONAL MAP ACCURACY STANDARDS
FOR SALE BY U.S. GEOLOGICAL SURVEY, DENVER, COLORADO 80225, OR RESTON, VIRGINIA 22092
A FOLDER DESCRIBING TOPOGRAPHIC MAPS AND SYMBOLS IS AVAILABLE ON REQUEST



QUADRANGLE LOCATION

ROAD CLASSIFICATION	
Primary highway, hard surface	Light-duty road, hard or improved surface
Secondary highway, hard surface	Unimproved road
Interstate Route	U. S. Route
	State Route

LIBRARY USE ONLY

OFFICE COPY

SPAR CITY, COLO.
NW/4 SPAR CITY 15' QUADRANGLE
37106-F8-TF-024

1986

DMA 4659 III NW-SERIES V877

G
3701
C222
s24
U5

MAY 26 1987
U. S. GOVT. DEPOSITORY
FOR MAPS
ARTHUR LAKES LIBRARY
COLORADO SCHOOL OF MINES