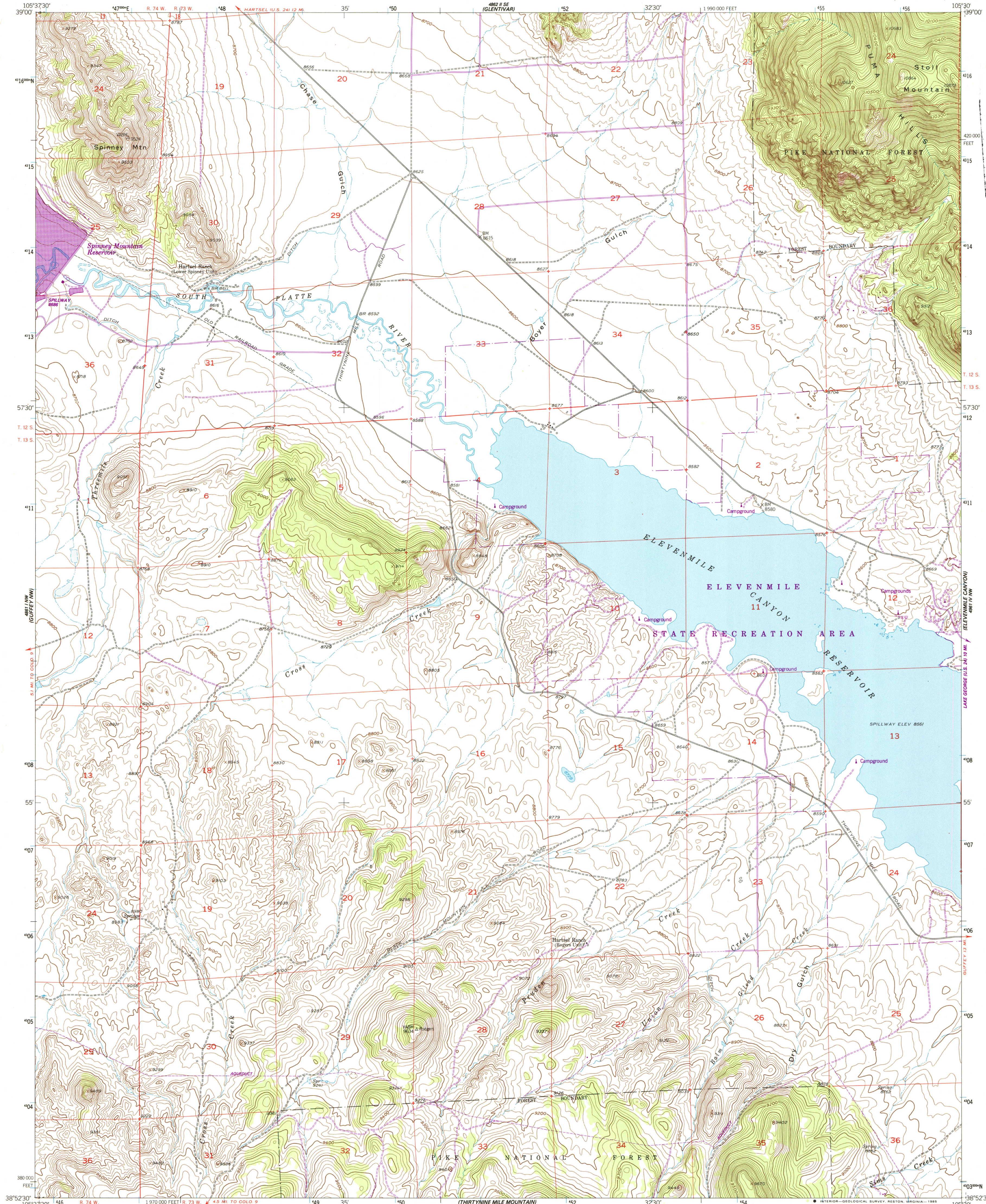


UNITED STATES
DEPARTMENT OF THE INTERIOR
GEOLOGICAL SURVEY

SPINNEY MOUNTAIN QUADRANGLE
COLORADO-PARK CO.
7.5 MINUTE SERIES (TOPOGRAPHIC)

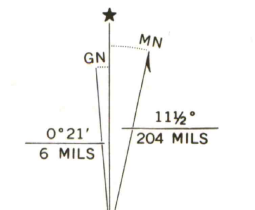


Maped, edited, and published by the Geological Survey
as part of the Department of the Interior program
for the development of the Missouri River Basin

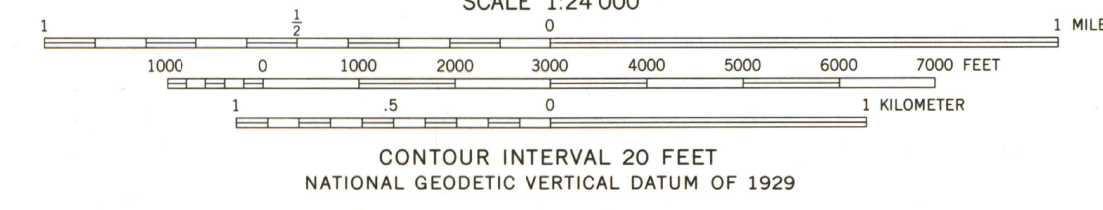
Control by USGS and NOS/NOAA
Topography from aerial photographs by multiplex methods
Aerial photographs taken 1952 and 1953. Field check 1956

Polyconic projection. 1927 North American Datum
10,000-foot grid based on Colorado coordinate system,
central zone
1000-meter Universal Transverse Mercator grid ticks,
zone 13, shown in blue

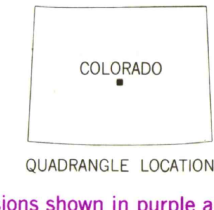
Dashed land lines indicate approximate locations
To place on the predicted North American Datum 1983
move the projection lines 4 meters north and
49 meters east as shown by dashed corner ticks



There may be private inholdings within the boundaries
of the National or State reservations shown on this map



THIS MAP COMPLIES WITH NATIONAL MAP ACCURACY STANDARDS
FOR SALE BY U. S. GEOLOGICAL SURVEY, DENVER, COLORADO 80225, OR RESTON, VIRGINIA 22092
A FOLDER DESCRIBING TOPOGRAPHIC MAPS AND SYMBOLS IS AVAILABLE ON REQUEST



ROAD CLASSIFICATION
Light-duty _____ Unimproved dirt _____

SPINNEY MOUNTAIN, COLO.
38105-H5-TF-024

1956
PHOTOREVISED 1984
DMA 4861 I NE-SERIES V877

LIBRARY USE ONLY

NOV 18 1985
MAP ROOM
ARTHUR LAKES LIBRARY

OFFICE COPY

G
C222
s24
U5