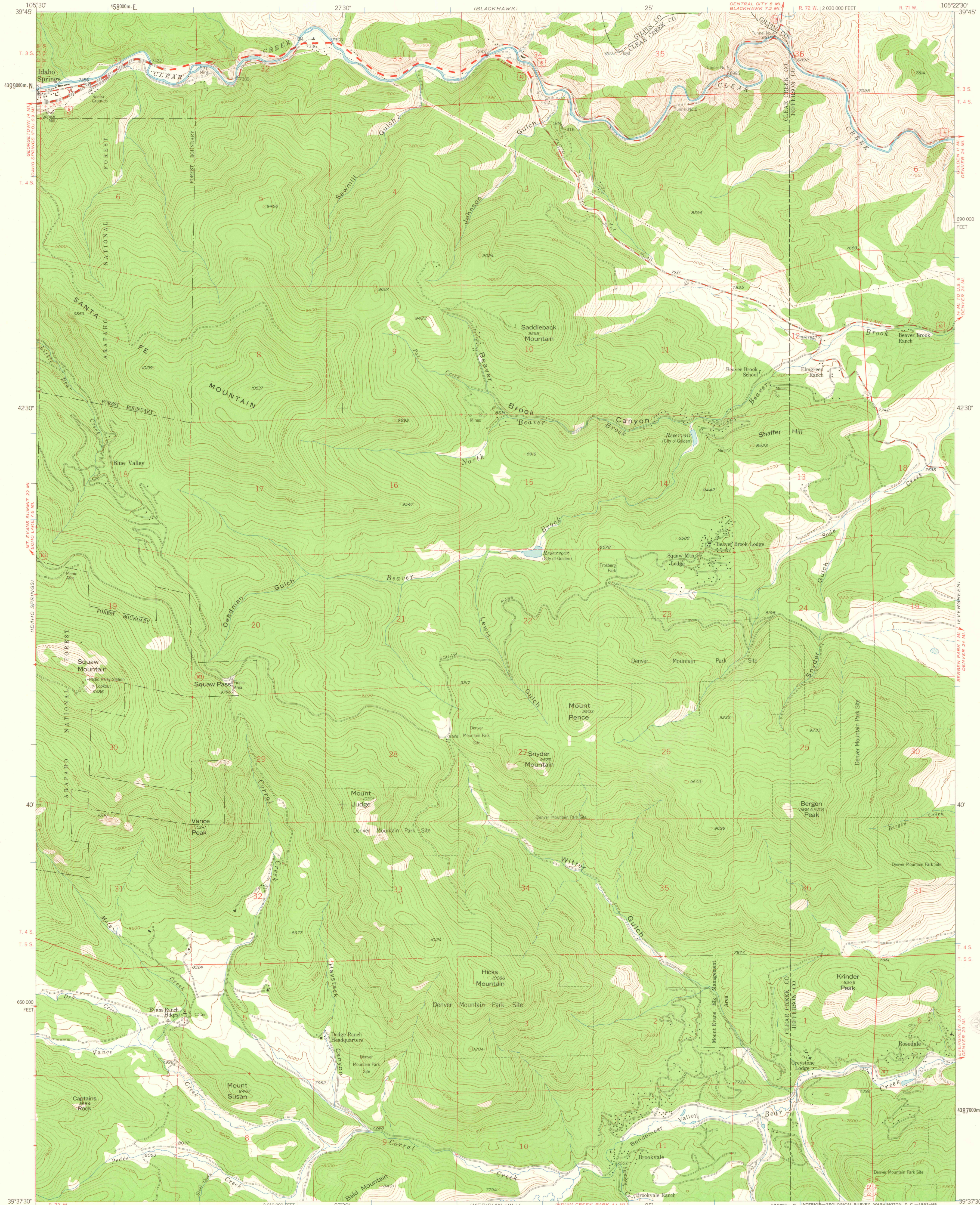


UNITED STATES
DEPARTMENT OF THE INTERIOR
GEOLOGICAL SURVEY

SQUAW PASS QUADRANGLE
COLORADO
7.5 MINUTE SERIES (TOPOGRAPHIC)



Mapped, edited, and published by the Geological Survey as part of the Department of the Interior program for the development of the Missouri River Basin Control by USGS and USC&GS

Topography from aerial photographs by photogrammetric methods

Aerial photographs taken 1953. Field check 1957

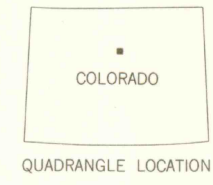
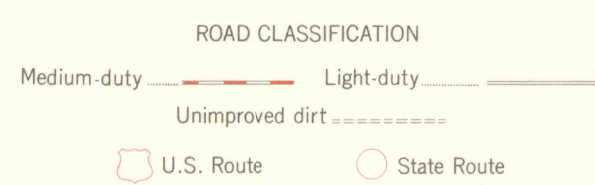
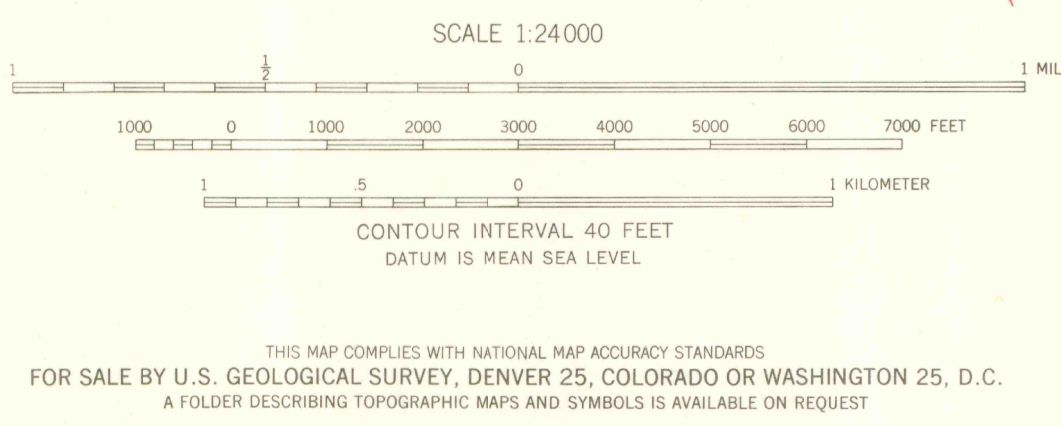
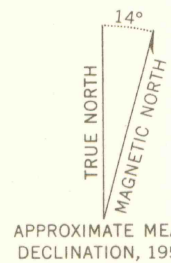
Polyconic projection. 1927 North American datum

10,000-foot grid based on Colorado coordinate system, central zone

1000-meter Universal Transverse Mercator grid ticks, zone 13, shown in blue

Dashed land lines indicate approximate locations

Unchecked elevations are shown in brown



SQUAW PASS, COLO.
N3937.5-W10522.5/7.5
1957

OFFICE COPY
LIBRARY USE ONLY

DEC 15 2003

9 3700
624
.C4
MAP ROOM