

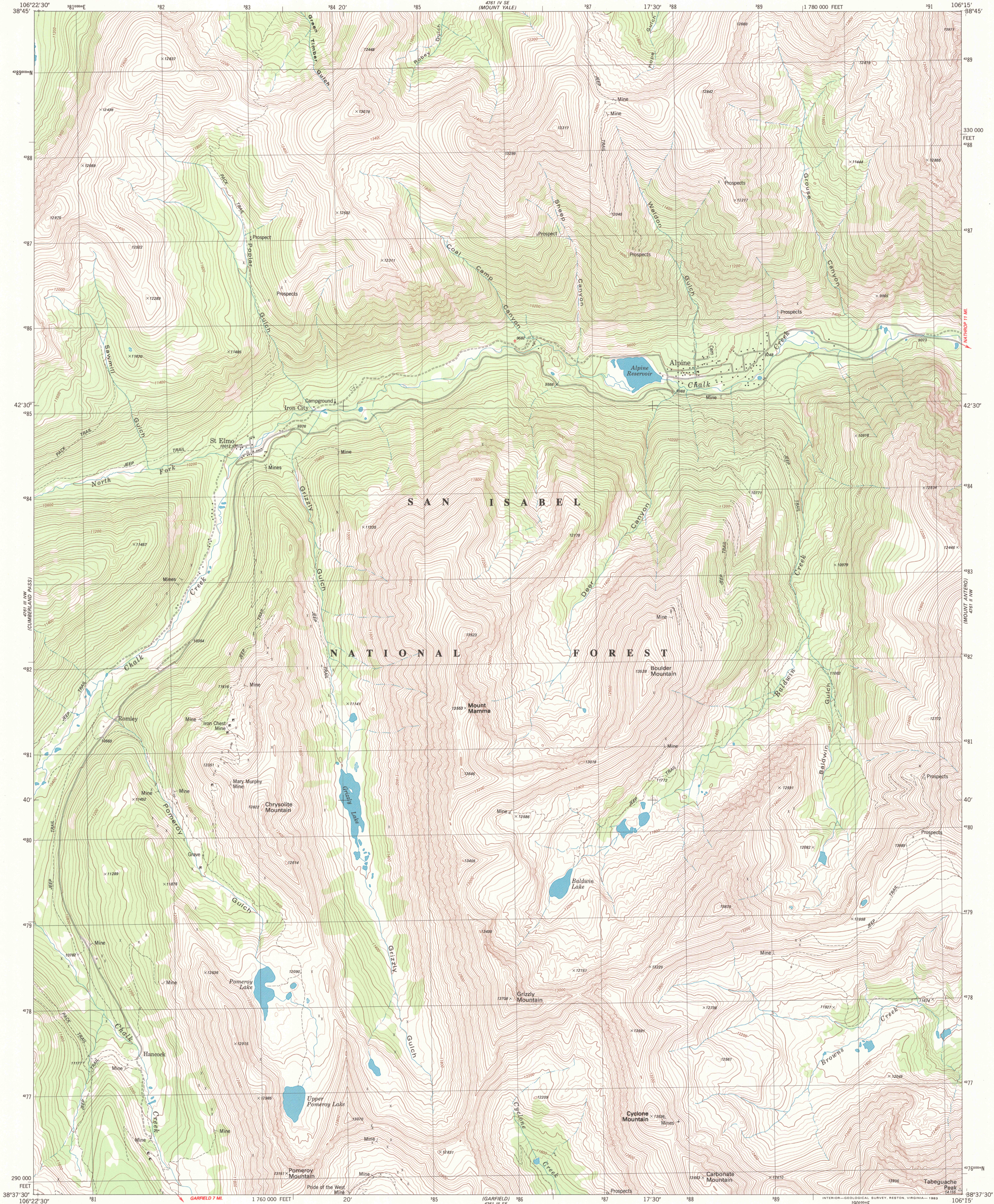
4761 IV SE
MOUNT YALE



U.S. DEPARTMENT OF THE INTERIOR
U.S. GEOLOGICAL SURVEY

ST. ELMO QUADRANGLE
COLORADO—CHAFFEE CO.
7.5 MINUTE SERIES (TOPOGRAPHIC)
NE 1/4 GARFIELD 15' QUADRANGLE

4761 I SW
BUENA VISTA WEST 11



Mapped, edited, and published by the Geological Survey

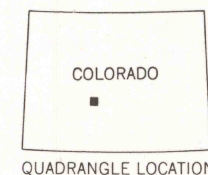
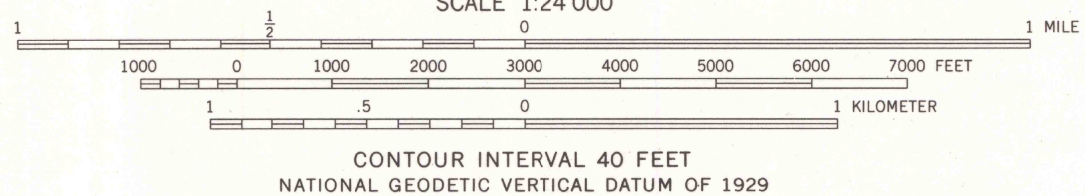
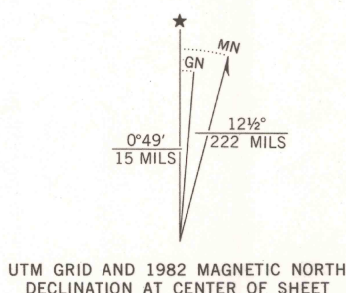
Control by USGS and NOS/NOAA
Topography by photogrammetric methods from aerial photographs
taken 1975. Field checked 1976. Map edited 1982

Projection and 10,000-foot grid ticks: Colorado
coordinate system, central zone (Lambert conformal conic)
1000-meter Universal Transverse Mercator grid, zone 13
1927 North American datum

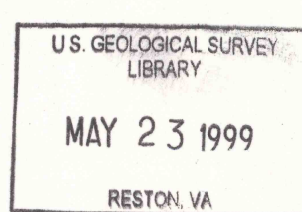
To place on the predicted North American Datum 1983
move the projection lines 4 meters north and
51 meters east as shown by dashed corner ticks

Land lines are not shown because of insufficient data

There may be private inholdings within the boundaries of
the National or State reservations shown on this map



| ROAD CLASSIFICATION | |
|---------------------------------|---|
| Primary highway, hard surface | Light-duty road, hard or improved surface |
| Secondary highway, hard surface | Unimproved road |
| Interstate Route | U. S. Route |
| | State Route |



ST. ELMO, COLO.
NE 1/4 GARFIELD 15' QUADRANGLE
N3837.5-W10615/7.5

1982

DMA 4761 III NE—SERIES V877

THIS MAP COMPLIES WITH MAP ACCURACY STANDARDS
FOR SALE BY U.S. GEOLOGICAL SURVEY, P.O. BOX 25286, DENVER, COLORADO 80225
A FOLDER DESCRIBING TOPOGRAPHIC MAPS AND SYMBOLS IS AVAILABLE ON REQUEST

