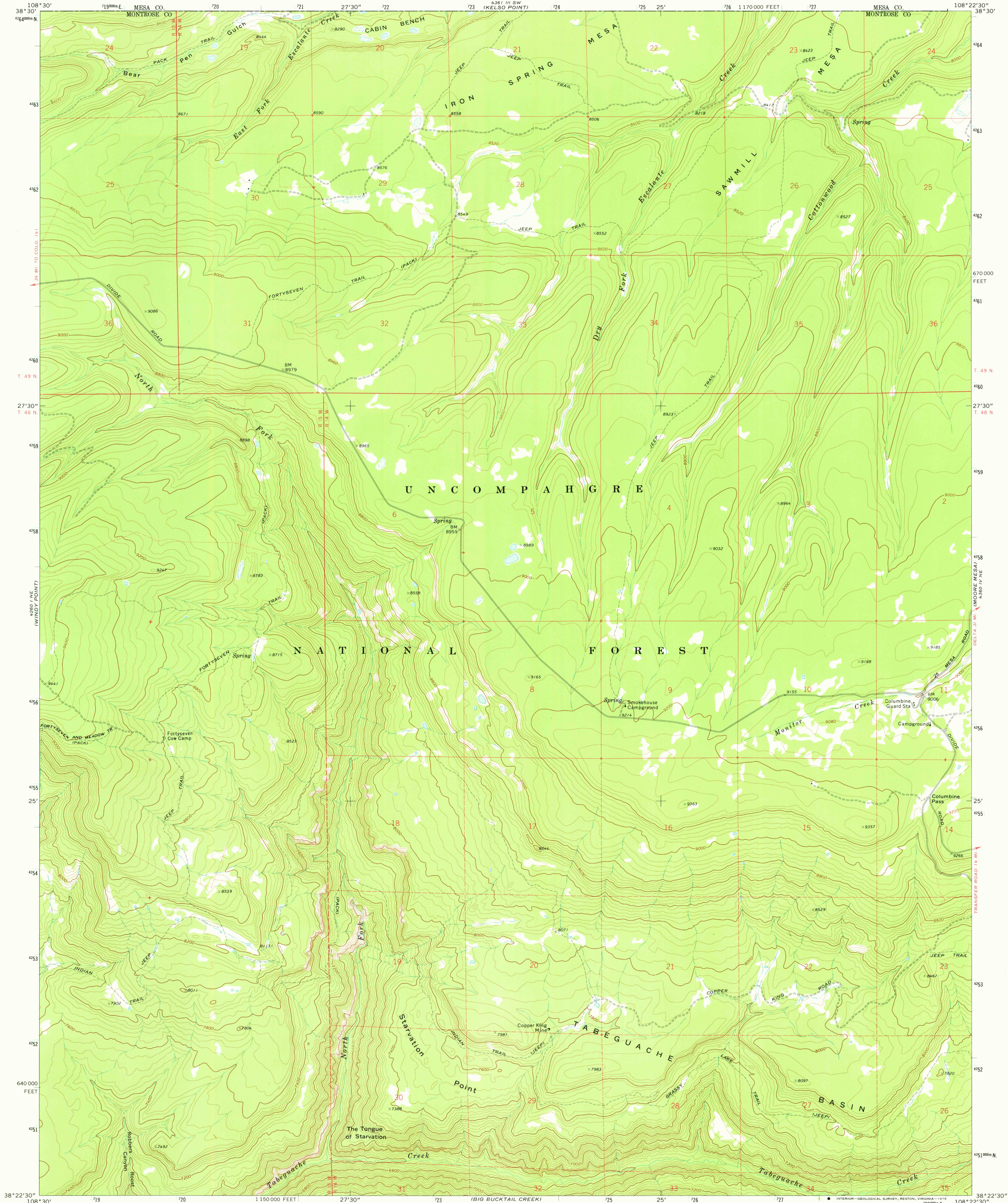
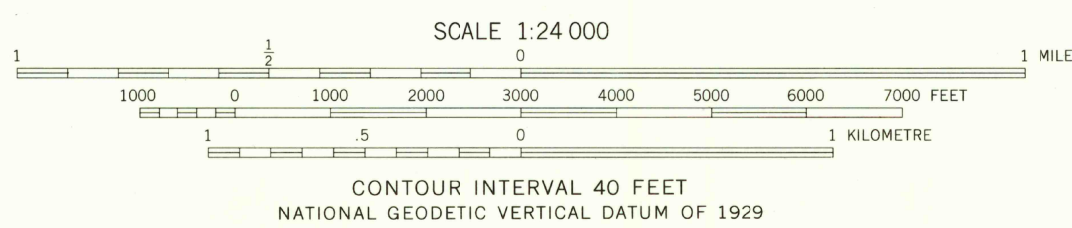
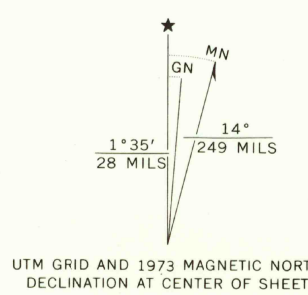


UNITED STATES
DEPARTMENT OF THE INTERIOR
GEOLOGICAL SURVEY

STARVATION POINT QUADRANGLE
COLORADO—MONTROSE CO.
7.5 MINUTE SERIES (TOPOGRAPHIC)



Mapped by the U. S. Forest Service
Edited and published by the Geological Survey
Control by USGS, NOS/NOAA, and U. S. Forest Service
Topography by photogrammetric methods from aerial
photographs taken 1964. Field checked by USGS 1973
Projection and 10,000-foot grid ticks: Colorado
coordinate system, south zone (Lambert conformal conic)
1000-metre Universal Transverse Mercator grid ticks,
zone 12, shown in blue. 1927 North American datum
Fine red dashed lines indicate selected fence lines
Certain land lines are omitted because of insufficient data
All recovered corners are shown



| ROAD CLASSIFICATION | |
|---------------------------------|---|
| Primary highway, hard surface | Light-duty road, hard or improved surface |
| Secondary highway, hard surface | Unimproved road |
| Interstate Route | U. S. Route |
| | State Route |

THIS MAP COMPLIES WITH NATIONAL MAP ACCURACY STANDARDS
FOR SALE BY U.S. GEOLOGICAL SURVEY, DENVER, COLORADO 80225, OR RESTON, VIRGINIA 22092
A FOLDER DESCRIBING TOPOGRAPHIC MAPS AND SYMBOLS IS AVAILABLE ON REQUEST

USGS
Historical File
Topographic Division

STARVATION POINT, COLO.
N3822.5—W10822.5/7.5
1973
AMS 4360 IV NW—SERIES V877

MAR 29 1976