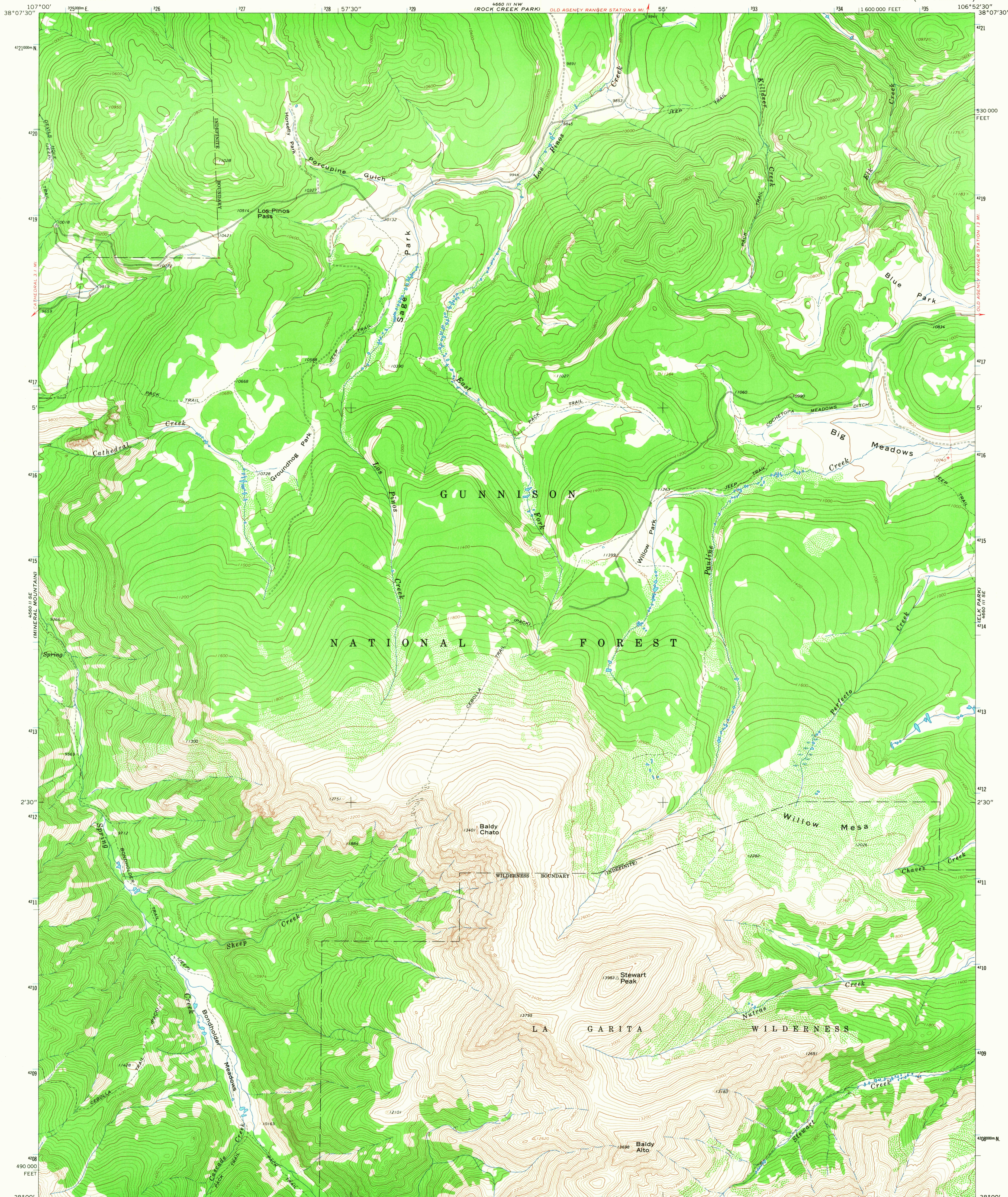


UNITED STATES  
DEPARTMENT OF THE INTERIOR  
GEOLOGICAL SURVEY

STEWART PEAK QUADRANGLE  
COLORADO—SAGUACHE CO.  
7.5 MINUTE SERIES (TOPOGRAPHIC)

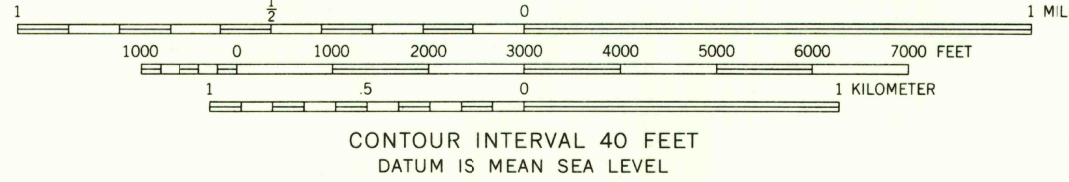
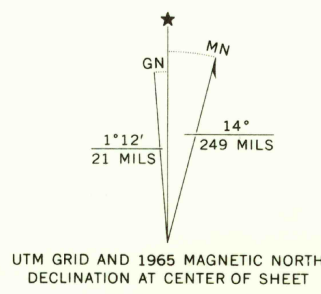


Mapped, edited, and published by the Geological Survey

Control by USGS and USC&GS

Topography by photogrammetric methods from aerial  
photographs taken 1964. Field checked 1965

Polycyclic projection. 1927 North American datum  
10,000-foot grid based on Colorado coordinate system,  
south zone  
1000-meter Universal Transverse Mercator grid ticks,  
zone 13, shown in blue  
Fine red dashed lines indicate selected fence lines  
Land lines are omitted because of insufficient data



USGS  
Historical File  
Topographic Division

COLORADO  
U.S.G.S.  
TOPOGRAPHIC DIVISION

ROAD CLASSIFICATION  
Light duty ————— Unimproved dirt - - - - -

THIS MAP COMPLIES WITH NATIONAL MAP ACCURACY STANDARDS  
FOR SALE BY U.S. GEOLOGICAL SURVEY, DENVER, COLORADO 80225, OR WASHINGTON, D. C. 20242  
A FOLDER DESCRIBING TOPOGRAPHIC MAPS AND SYMBOLS IS AVAILABLE ON REQUEST

STEWART PEAK, COLO.  
N3800—W10652.5/7.5  
1965

AMS 4660 III SW—SERIES V877

2945  
SEP 20 1968