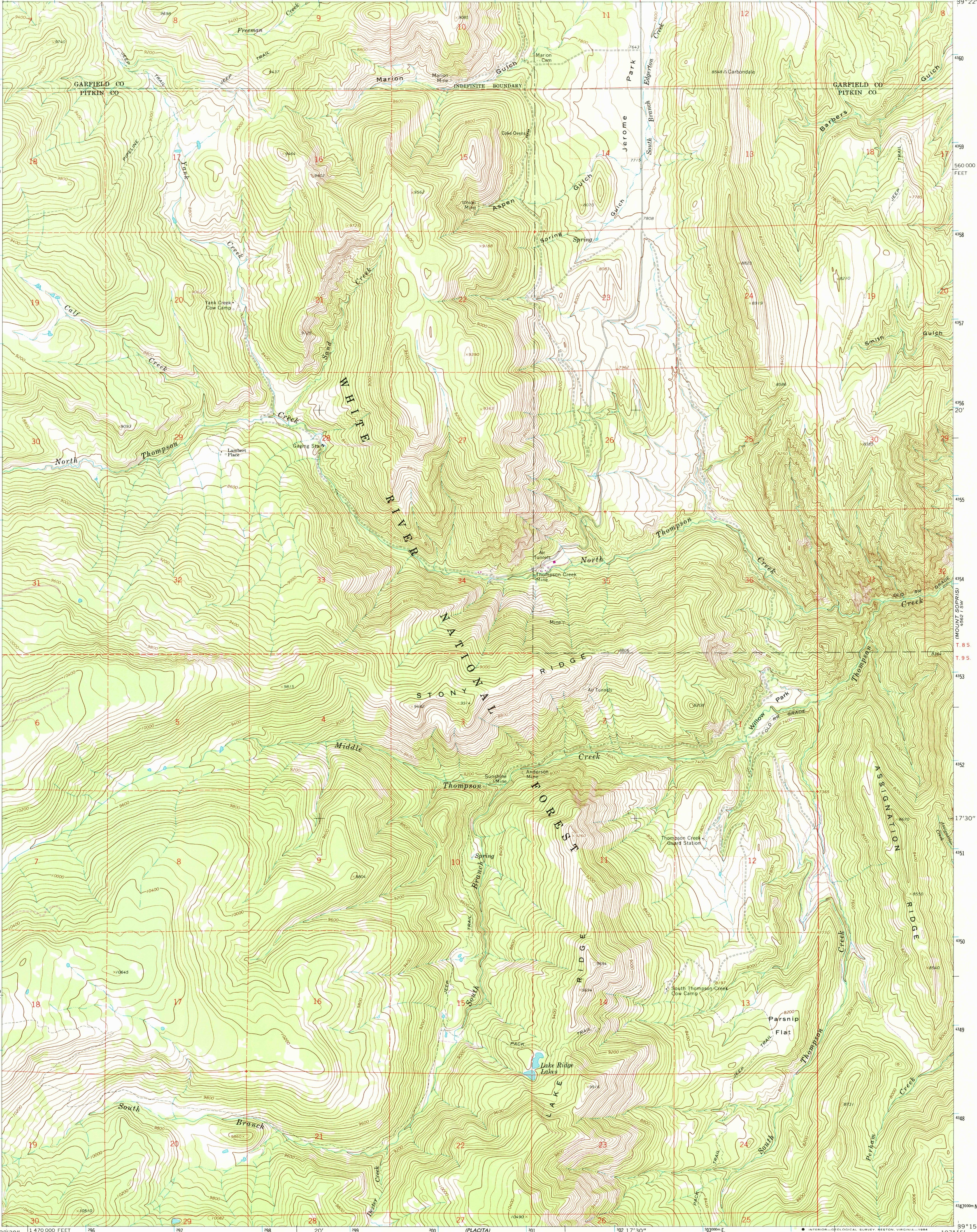


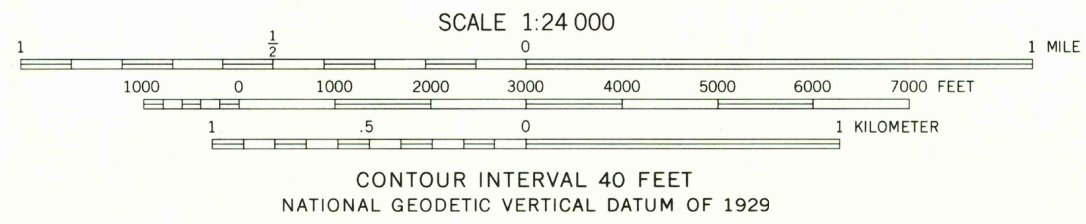
UNITED STATES
DEPARTMENT OF THE INTERIOR
GEOLOGICAL SURVEY

STONY RIDGE QUADRANGLE
COLORADO
7.5 MINUTE SERIES (TOPOGRAPHIC)

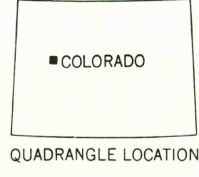


Mapped, edited, and published by the Geological Survey
Control by USGS and NOS/NOAA
Topography by photogrammetric methods from aerial
photographs taken 1962. Field checked 1963
Polyconic projection. 1927 North American Datum
10,000-foot grid based on Colorado coordinate system, central zone
1000-meter Universal Transverse Mercator grid ticks,
zone 13, shown in blue
Fine red dashed lines indicate selected fence lines
Where omitted, land lines have not been established
There may be private inholdings within the boundaries
of the National or State reservations shown on this map

To place on the predicted North American Datum 1983
move the projection lines 5 meters north and
54 meters east as shown by dashed corner ticks



ROAD CLASSIFICATION
Light-duty ————— Unimproved dirt - - - - -



STONY RIDGE, COLO.
39107-C3-TF-024
1963
PHOTOREVISED 1982
DMA 4562 IV SE-SERIES 7877