

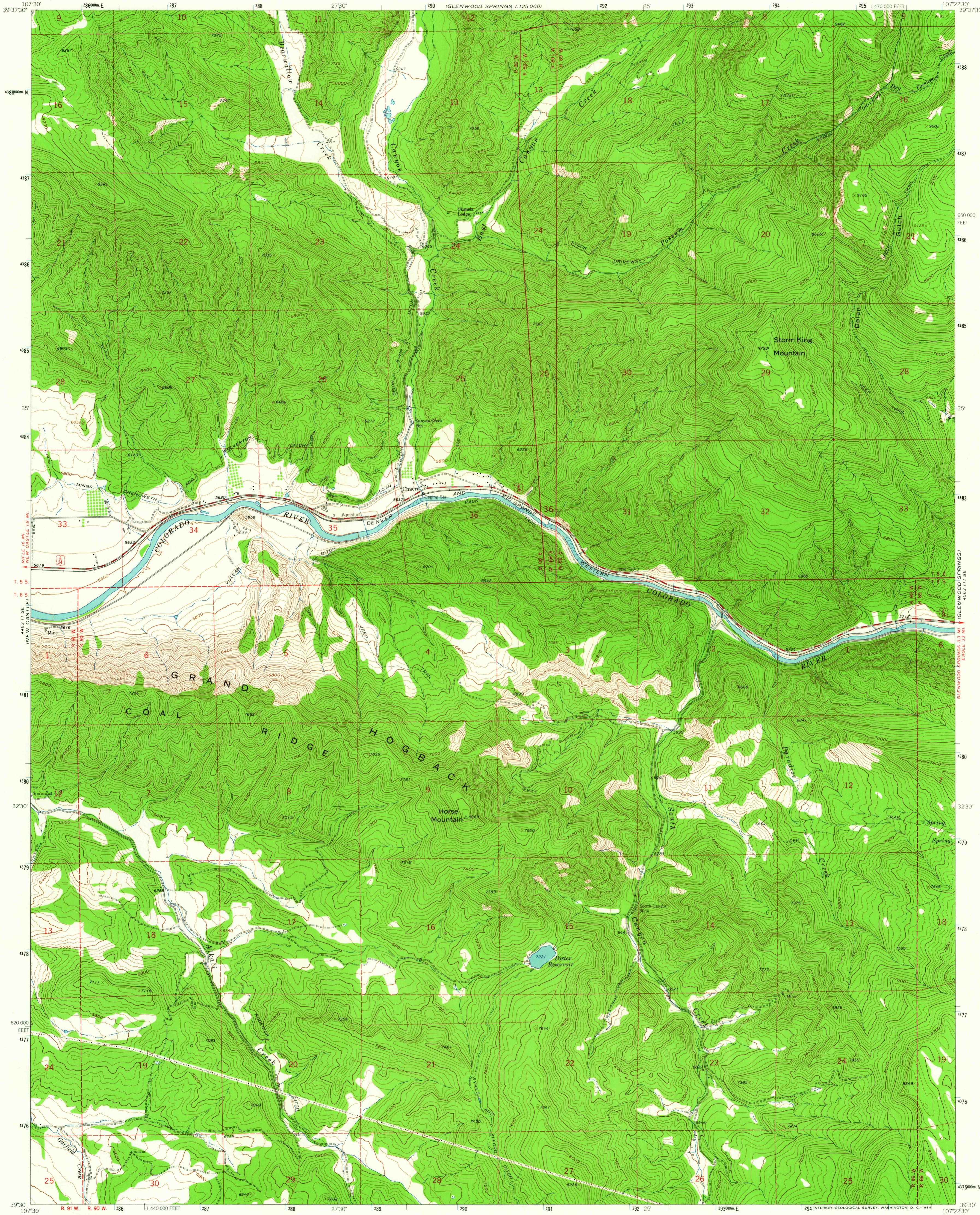
GRAND HOGBACK
1:125,000

GLENWOOD SPRINGS
1:125,000

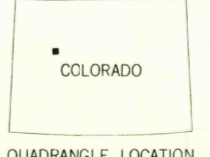
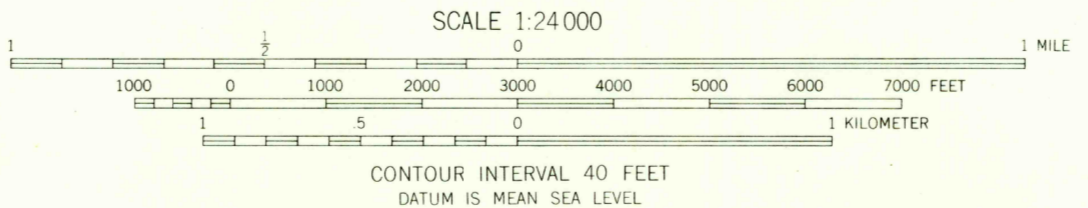
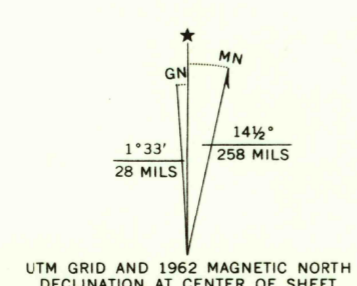
UNITED STATES
DEPARTMENT OF THE INTERIOR
GEOLOGICAL SURVEY

STATE OF COLORADO
DEPARTMENT OF NATURAL RESOURCES

STORM KING MOUNTAIN QUADRANGLE
COLORADO—GARFIELD CO
7.5 MINUTE SERIES (TOPOGRAPHIC)



Mapped, edited, and published by the Geological Survey
Control by USGS and US&GS
Topography by photogrammetric methods from aerial photographs taken 1960. Field checked 1962
Polyconic projection. 1927 North American datum
10,000-foot grid based on Colorado coordinate system, central zone
1000-meter Universal Transverse Mercator grid ticks, zone 13, shown in blue
Fine red dashed lines indicate selected fence lines



STORM KING MOUNTAIN, COLO.
N3930—W10722.5/7.5

THIS MAP COMPLIES WITH NATIONAL MAP ACCURACY STANDARDS
FOR SALE BY U.S. GEOLOGICAL SURVEY, DENVER 25, COLORADO OR WASHINGTON 25, D. C.
A FOLDER DESCRIBING TOPOGRAPHIC MAPS AND SYMBOLS IS AVAILABLE ON REQUEST

1962
AMS 4563 111 SW—SERIES V877

3240
MAR 2 1964