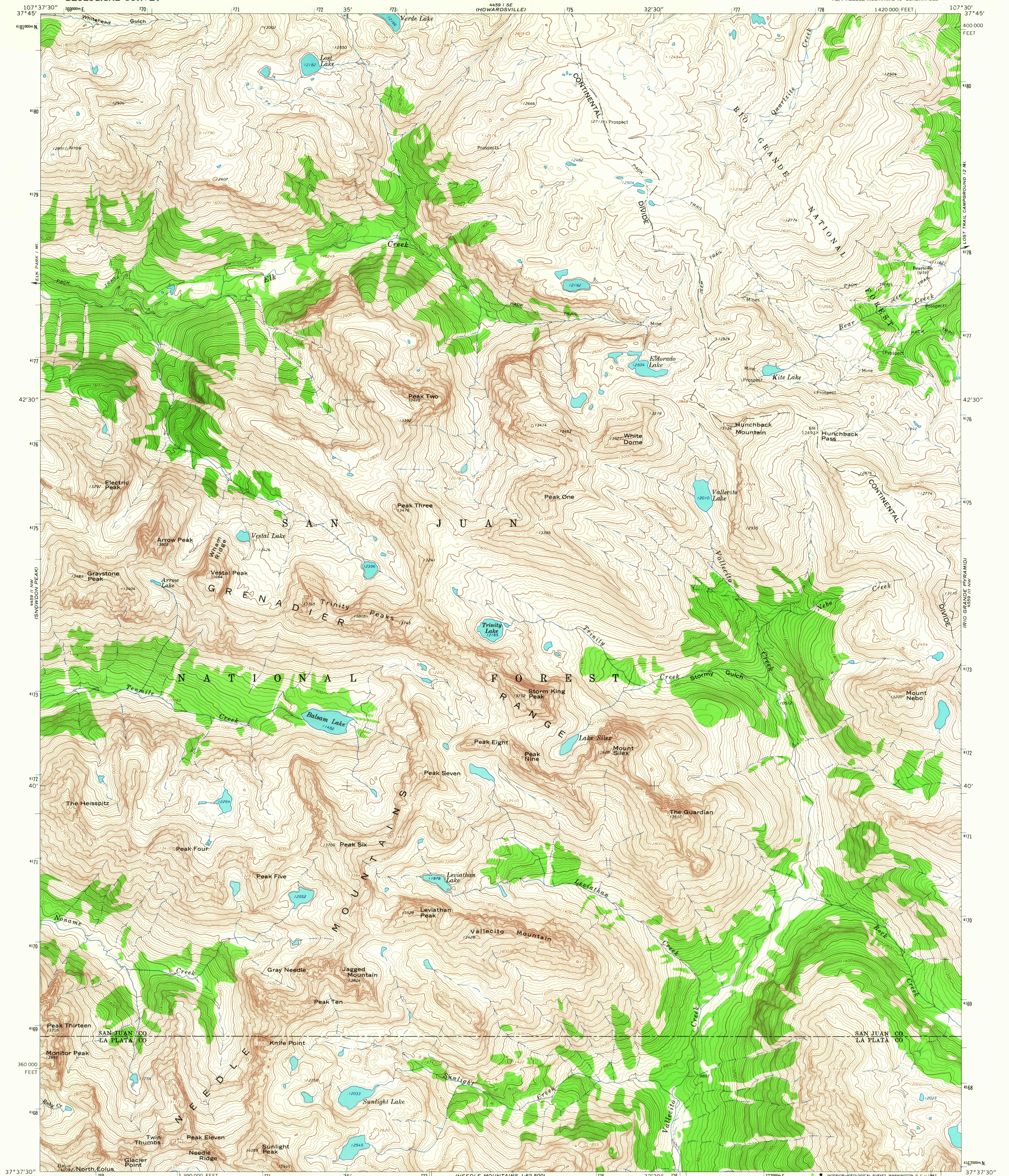
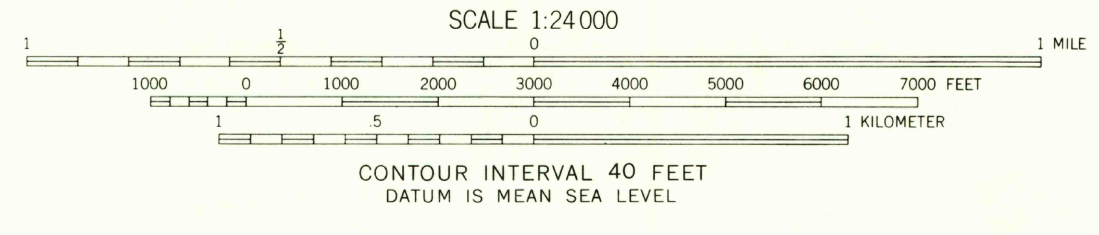
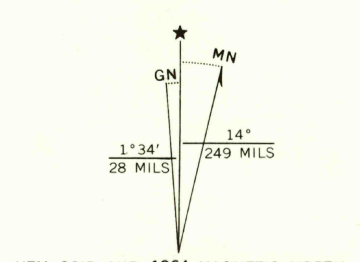


4459 II SE
(POLE CREEK
MOUNTAIN)



Mapped, edited, and published by the Geological Survey
Control by USGS and US&GS
Topography by photogrammetric methods from aerial
photographs taken 1963. Field checked 1964
Polyconic projection. 1927 North American datum
10,000-foot grid based on Colorado coordinate system, south zone
1000-meter Universal Transverse Mercator grid ticks,
zone 13, shown in blue
Land lines omitted because of insufficient data



CONTOUR INTERVAL 40 FEET
DATUM IS MEAN SEA LEVEL

THIS MAP COMPLIES WITH NATIONAL MAP ACCURACY STANDARDS
FOR SALE BY U. S. GEOLOGICAL SURVEY, DENVER, COLORADO 80225, OR WASHINGTON, D. C. 20242
A FOLDER DESCRIBING TOPOGRAPHIC MAPS AND SYMBOLS IS AVAILABLE ON REQUEST

USGS
Historical &
Topographic Division

ROAD CLASSIFICATION
Trails

COLORADO
U.S.G.S.
FILE COPY
TOPOGRAPHIC DIVISION

STORM KING PEAK, COLO.
NE/4 NEEDLE MOUNTAINS 15' QUADRANGLE
N3737.5—W10730/7.5
1964
AMS 4459 II NE—SERIES V877

230
SEP 1 1967