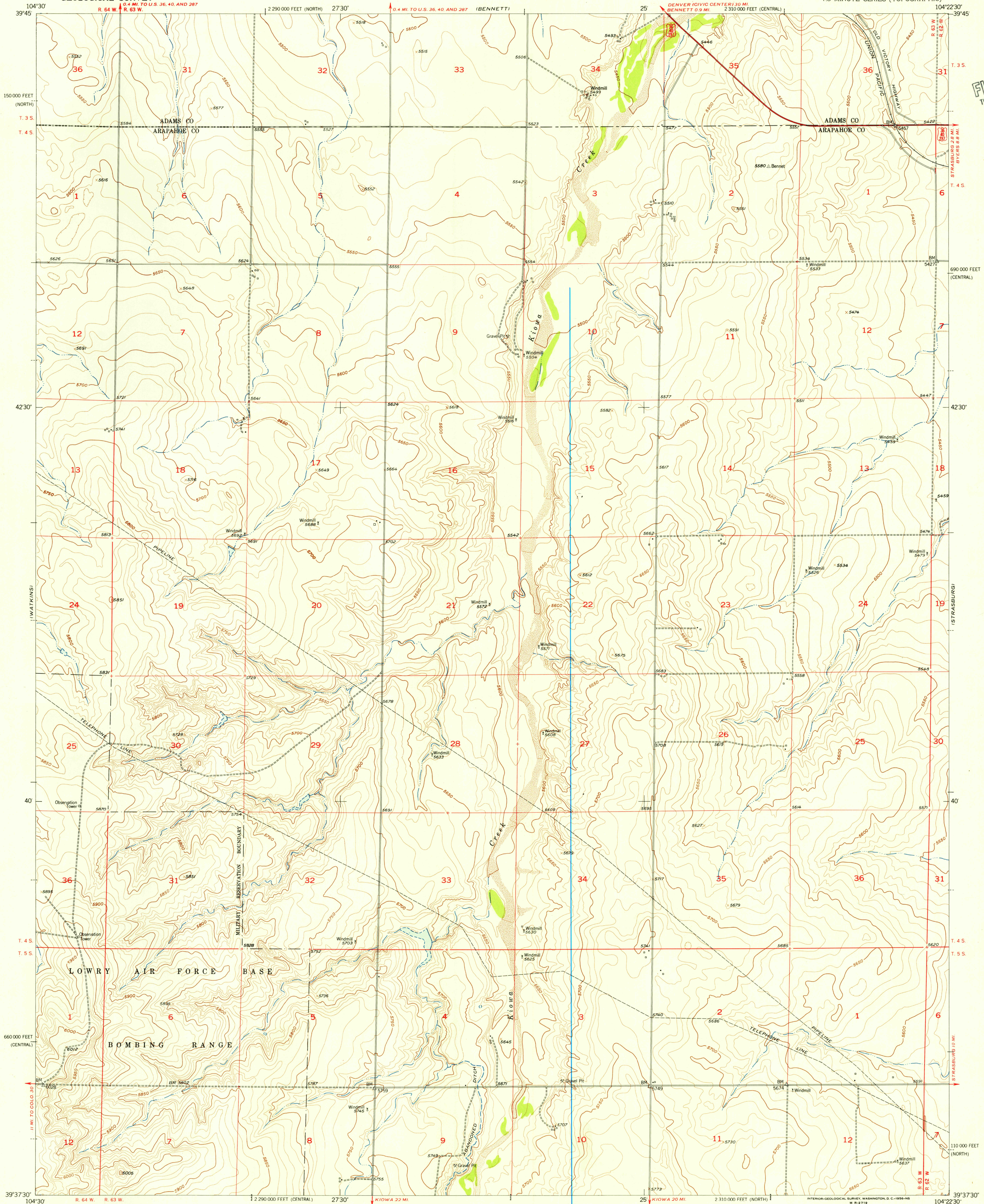


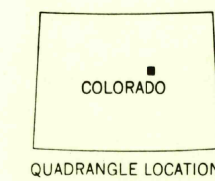
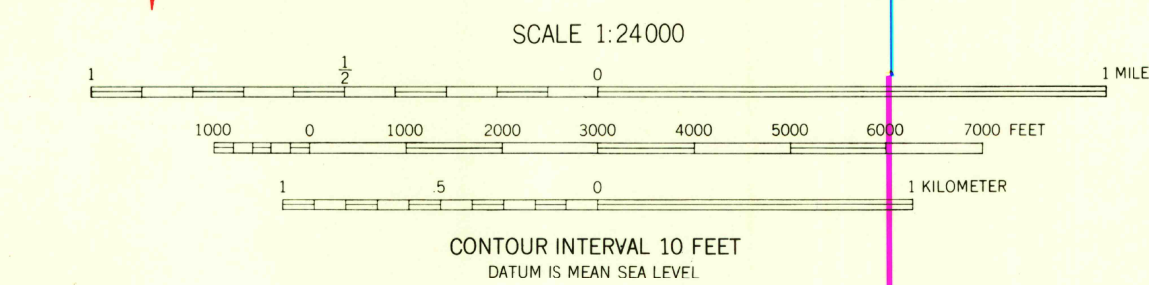
UNITED STATES
DEPARTMENT OF THE INTERIOR
GEOLOGICAL SURVEY

STRASBURG NW QUADRANGLE
COLORADO
7.5 MINUTE SERIES (TOPOGRAPHIC)



Mapped, edited, and published by the Geological Survey
as part of the Department of the Interior Program
for the development of the Missouri River Basin
Control by USGS and USC&GS
Culture and drainage compiled from aerial photographs
taken 1950. Topography by planetable surveys 1955
Polyconic projection. 1927 North American datum.
10,000-foot grid based on Colorado coordinate system
central and north zones

TRUE NORTH
MAGNETIC NORTH
APPROXIMATE MEAN
DECLINATION, 1955



ROAD CLASSIFICATION
Heavy-duty _____ Light-duty _____
Medium-duty _____ Unimproved dirt _____
U.S. Route _____ State Route _____

STRASBURG NW, COLO.
N937.5-W10422.5/7.5

U.S.G.S.
FILE COPY
TOPOGRAPHIC DIVISION

U.S.G.S.
FILE COPY
TOPOGRAPHIC DIVISION

JUL 3 1956
2075