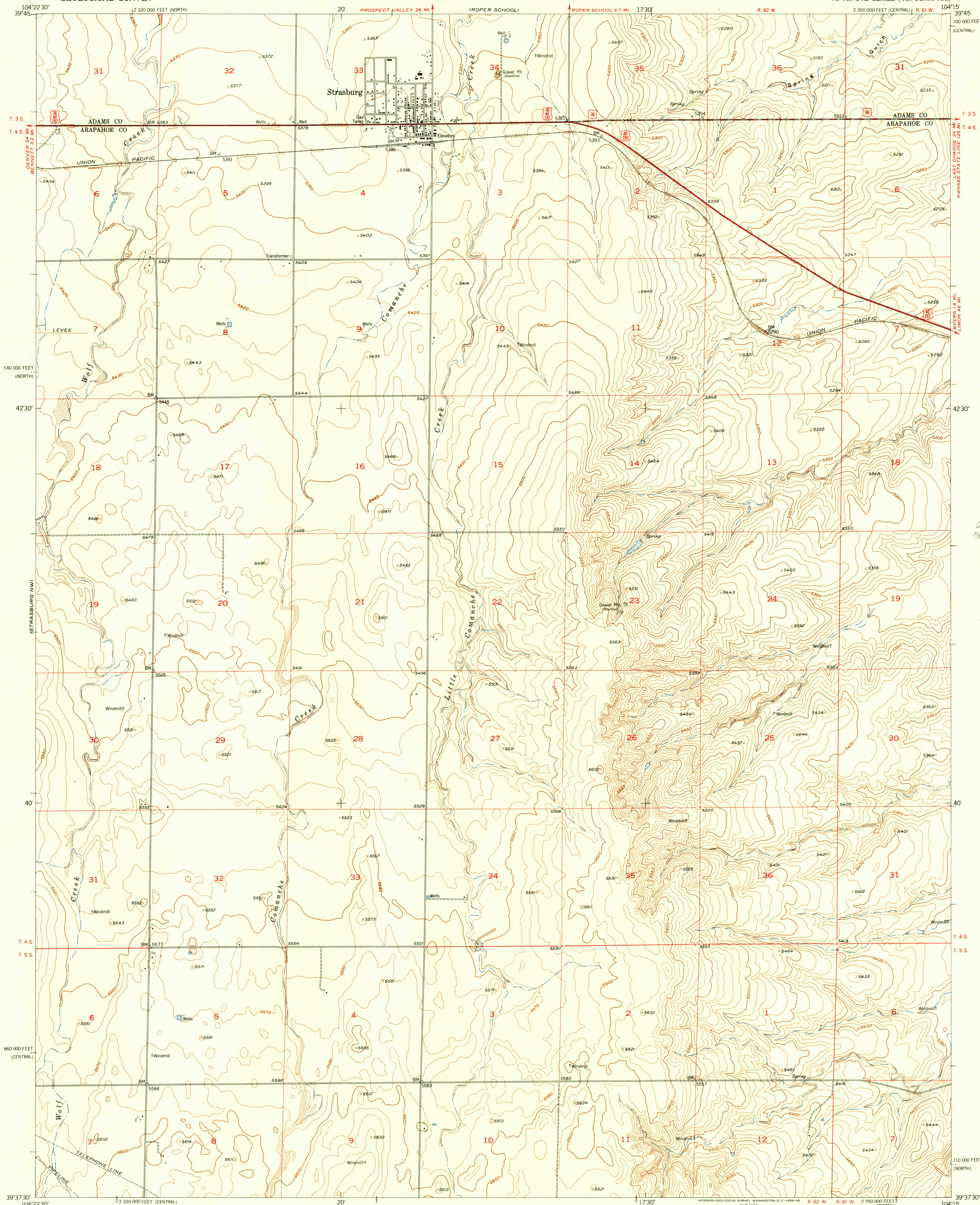


UNITED STATES  
DEPARTMENT OF THE INTERIOR  
GEOLOGICAL SURVEY

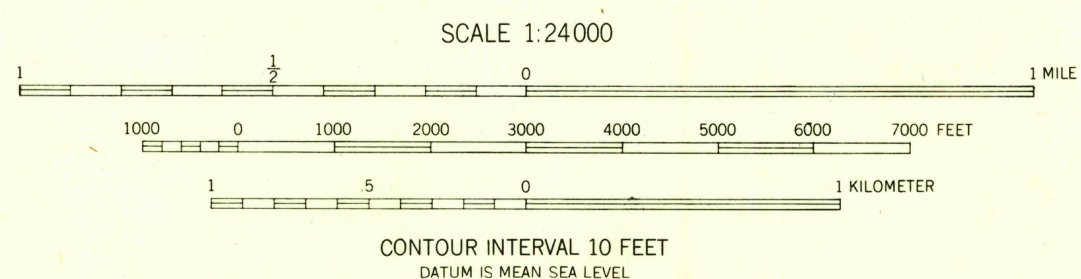
STRASBURG QUADRANGLE  
COLORADO  
7.5 MINUTE SERIES (TOPOGRAPHIC)



U.S.G.S.  
FILE COPY  
TOPOGRAPHIC DIVISION

Mapped, edited, and published by the Geological Survey  
as part of the Department of the Interior program  
for the development of the Missouri River Basin  
Control by USGS and USC&GS  
Culture and drainage in part compiled from aerial photographs  
taken 1950. Topography by planetable surveys 1955  
Polyconic projection. 1927 North American datum  
10,000-foot grid based on Colorado coordinate system,  
central and north zones

TRUE NORTH  
MAGNETIC NORTH  
APPROXIMATE MEAN  
DECLINATION, 1955



COLORADO  
QUADRANGLE LOCATION

ROAD CLASSIFICATION  
Heavy-duty, Medium-duty, U.S. Route, Light-duty, Unimproved dirt, State Route

USGS  
Historical File  
Topographic Division

STRASBURG, COLO.  
N3937.5-W10415.7.5

U.S.G.S.  
FILE COPY  
TOPOGRAPHIC DIVISION

THIS MAP COMPLIES WITH NATIONAL MAP ACCURACY STANDARDS  
FOR SALE BY U.S. GEOLOGICAL SURVEY, FEDERAL CENTER, DENVER, COLORADO OR WASHINGTON 25, D.C.  
A FOLDER DESCRIBING TOPOGRAPHIC MAPS AND SYMBOLS IS AVAILABLE ON REQUEST

1955

APR 4 1956