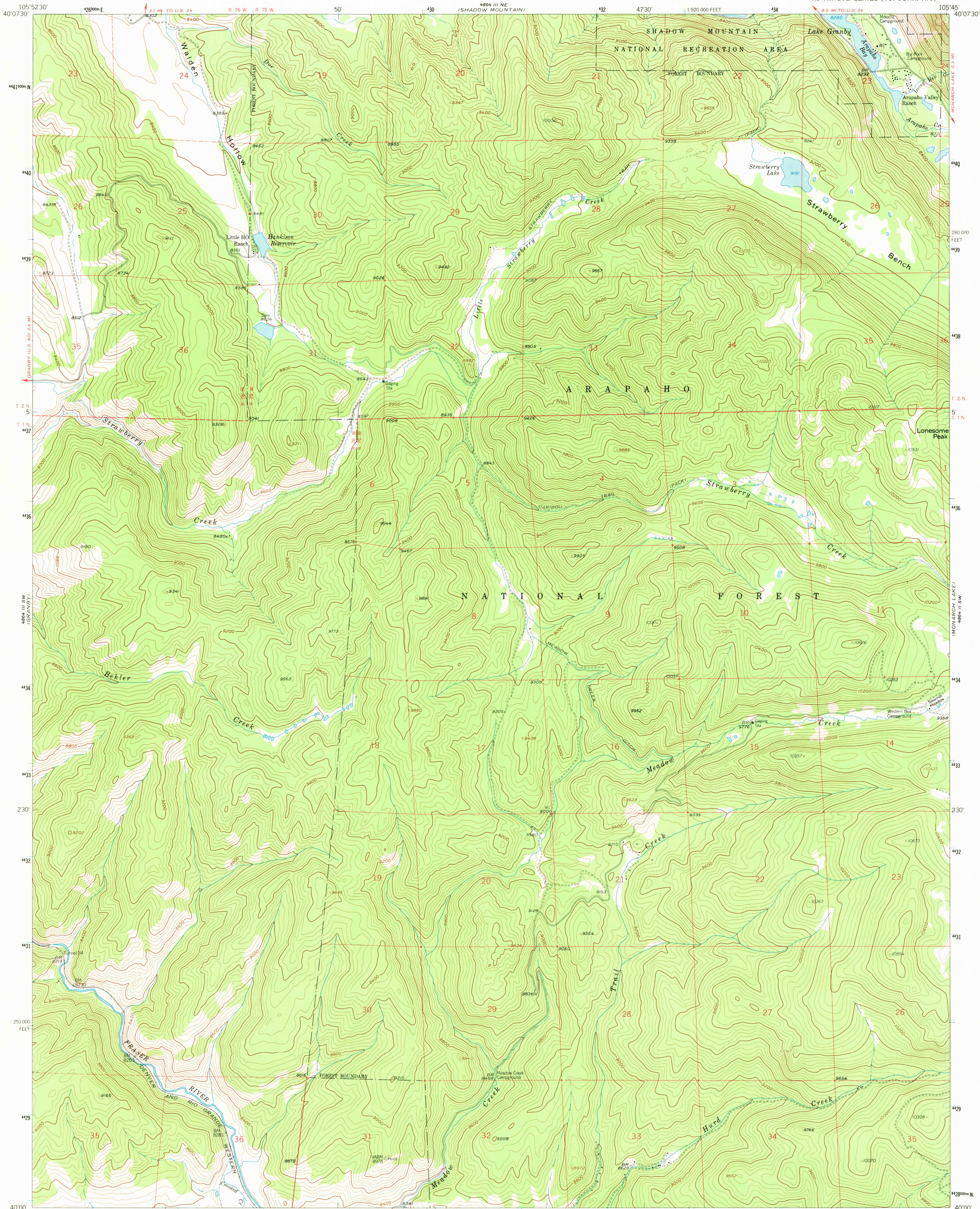
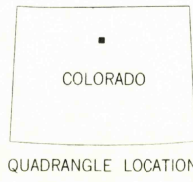
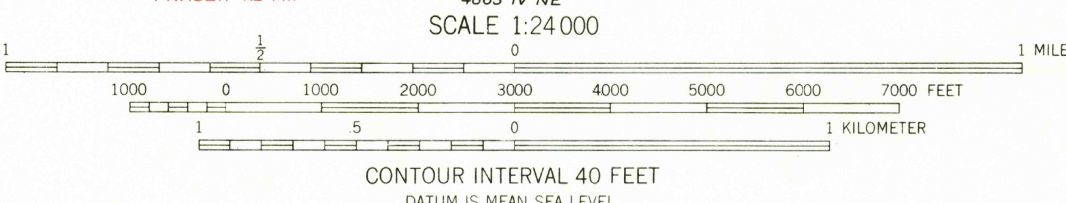
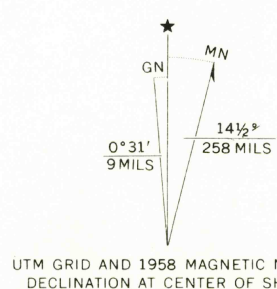


UNITED STATES
DEPARTMENT OF THE INTERIOR
GEOLOGICAL SURVEY

STRAWBERRY LAKE QUADRANGLE
COLORADO-GRAND CO.
7.5 MINUTE SERIES (TOPOGRAPHIC)



Maped, edited, and published by the Geological Survey
Control by USGS and USC&GS
Topography from aerial photographs by photogrammetric methods
Aerial photographs taken 1953. Field check 1958
Polyconic projection. 1927 North American datum
10,000-foot grid based on Colorado coordinate system,
north zone
1000-meter Universal Transverse Mercator grid ticks,
zone 13, shown in blue
Dashed land lines indicate approximate locations
Certain land lines omitted in T. 1 N.-R. 76 W.
because of insufficient data
Unchecked elevations are shown in brown



ROAD CLASSIFICATION
Light-duty ————— Unimproved dirt - - - - -

THIS MAP COMPLIES WITH NATIONAL MAP ACCURACY STANDARDS
FOR SALE BY U.S. GEOLOGICAL SURVEY, DENVER, COLORADO 80225, OR WASHINGTON, D. C. 20242
A FOLDER DESCRIBING TOPOGRAPHIC MAPS AND SYMBOLS IS AVAILABLE ON REQUEST

STRAWBERRY LAKE, COLO.
N4000-W10545/7.5

1958 JUN 15 1973

AMS 4864 III SE-SERIES V877

6485