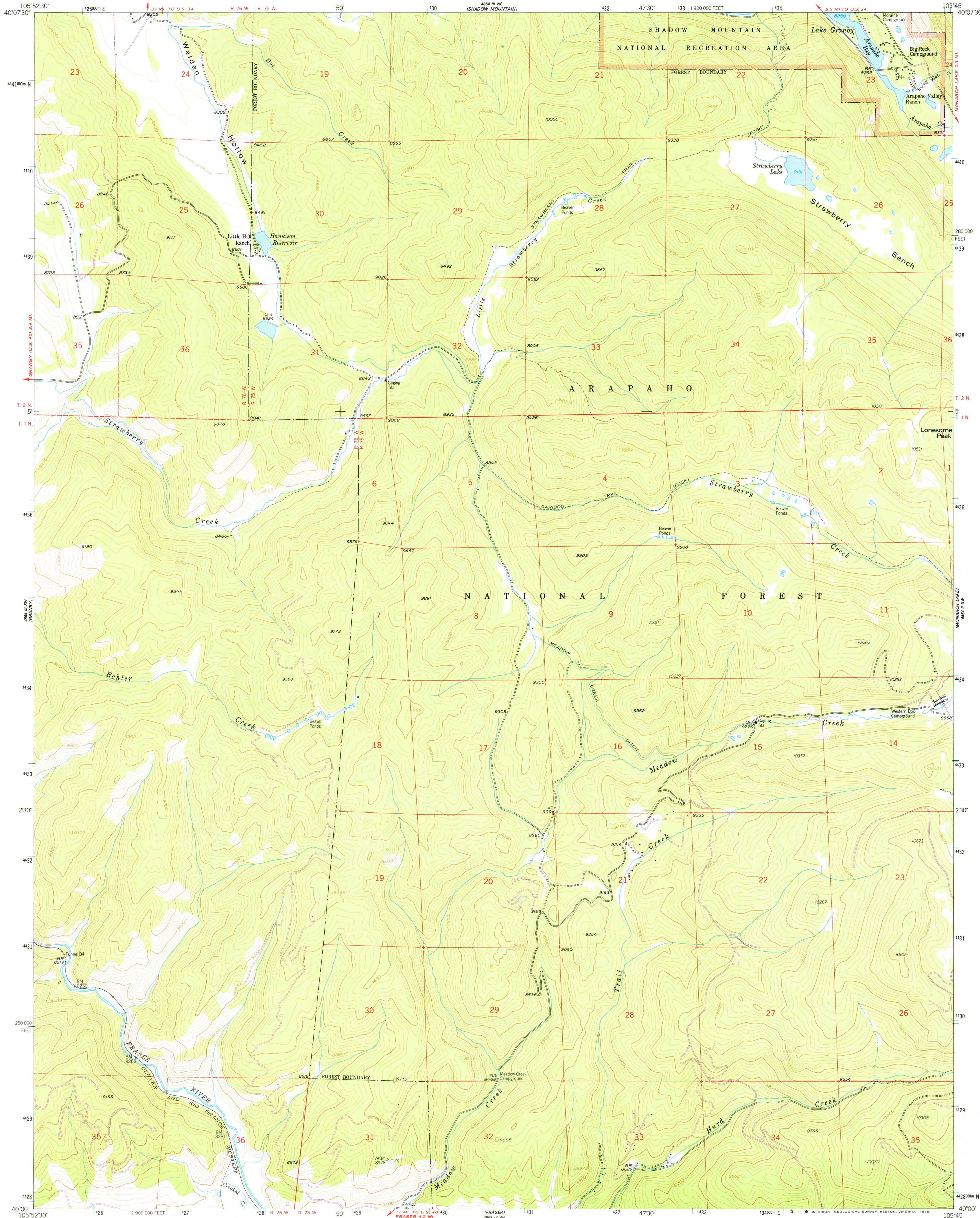
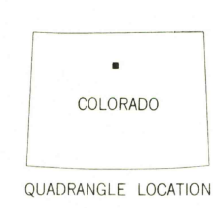
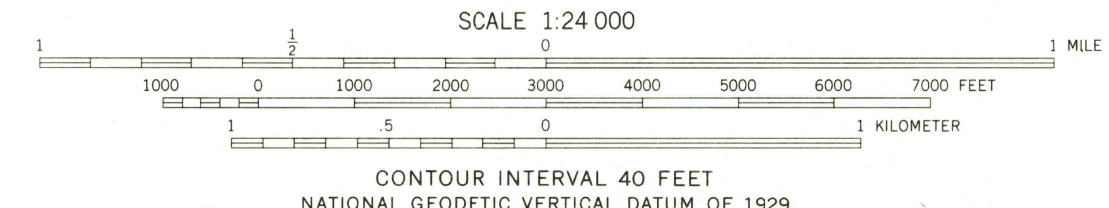
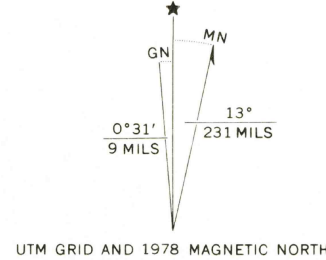


UNITED STATES  
DEPARTMENT OF THE INTERIOR  
GEOLOGICAL SURVEY

STRAWBERRY LAKE QUADRANGLE  
COLORADO—GRAND CO.  
7.5 MINUTE SERIES (TOPOGRAPHIC)



Mapped, edited, and published by the Geological Survey  
Control by USGS and NOS/NOAA  
Topography from aerial photographs by photogrammetric methods  
Aerial photographs taken 1953. Field check 1958  
Polyconic projection. 1927 North American datum  
10,000-foot grid based on Colorado coordinate system,  
north zone  
1000-meter Universal Transverse Mercator grid ticks,  
zone 13, shown in blue  
Dashed land lines indicate approximate locations  
Certain land lines omitted in T.1N.-R.76W.  
because of insufficient data  
Unchecked elevations are shown in brown  
Revisions shown in purple compiled from aerial photographs taken  
1976. Map edited 1978. This information not field checked



ROAD CLASSIFICATION  
Light-duty ..... Unimproved dirt .....

USGS  
Historical File  
Topographic Division

STRAWBERRY LAKE, COLO.  
N4000-W10545/7.5  
1958  
PHOTOREVISED 1978  
AMS 4864 III SE—SERIES V877

MAR 16 1979

6800