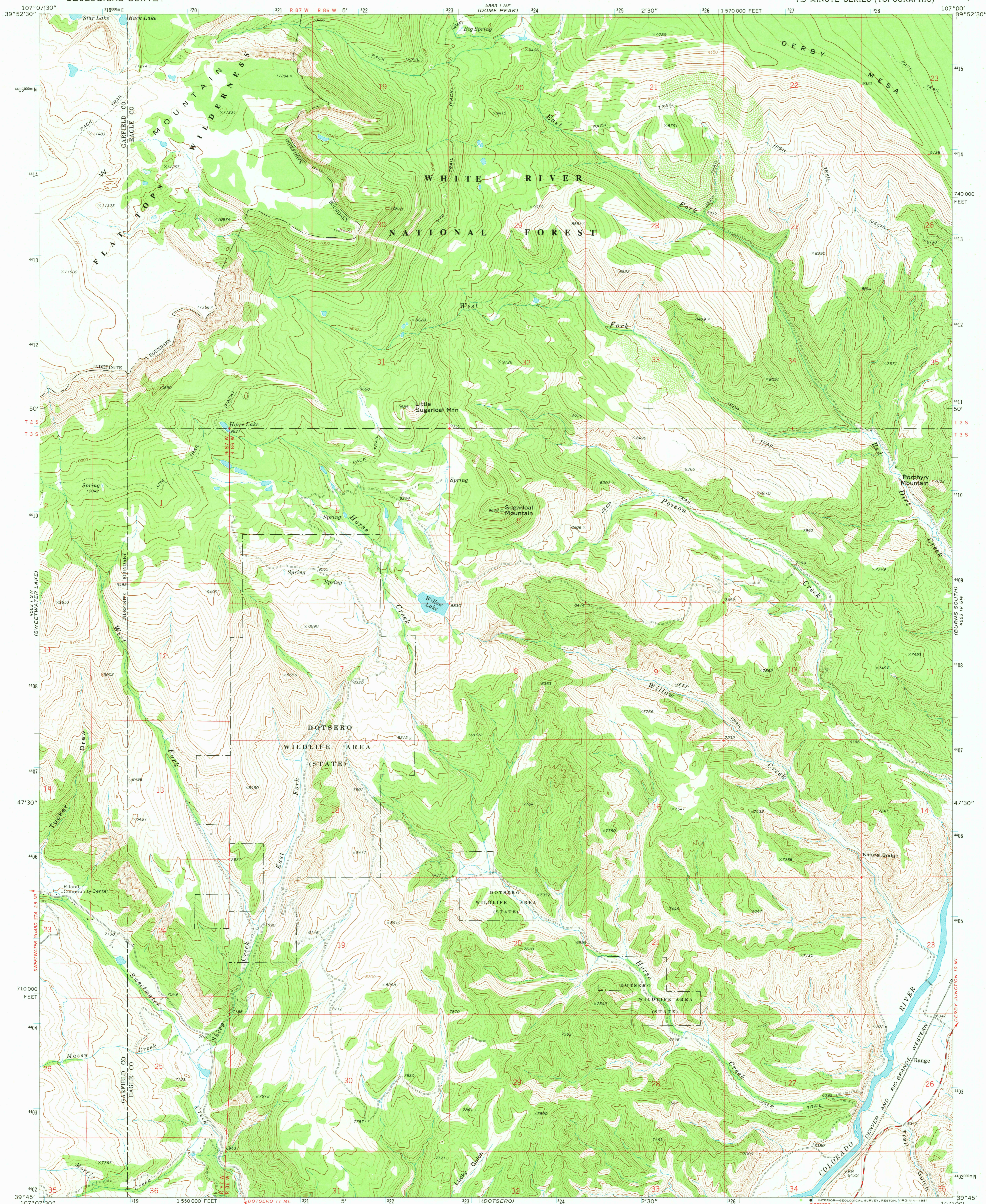


UNITED STATES  
DEPARTMENT OF THE INTERIOR  
GEOLOGICAL SURVEY

SUGARLOAF MOUNTAIN QUADRANGLE  
COLORADO  
7.5 MINUTE SERIES (TOPOGRAPHIC)



Mapped, edited, and published by the Geological Survey

Control by USGS, and NOS/NOAA, and U. S. Forest Service

Topography by photogrammetric methods from aerial photographs

taken 1964-65. Field checked 1974. Map edited 1977

Projection and 10,000-foot grid ticks: Colorado

coordinate system, central zone (Lambert conformal conic)

1000-meter Universal Transverse Mercator grid ticks, zone 13, shown in blue. 1927 North American datum

Fine red dashed lines indicate selected fence lines

Where omitted, land lines have not been established

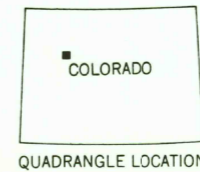
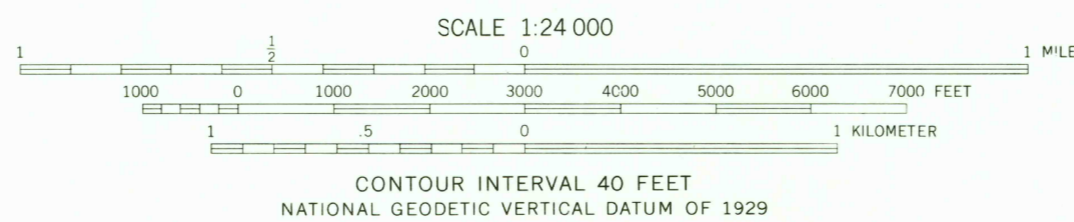
To place on the predicted North American Datum 1983

move the projection lines 6 meters north and

53 meters east as shown by dashed corner ticks

There may be private inholdings within the boundaries of

the National or State reservations shown on this map



ROAD CLASSIFICATION

Primary highway, hard surface

Secondary highway, hard surface

Unimproved road

Interstate Route

U. S. Route

State Route

SUGARLOAF MOUNTAIN, COLO.

N 3945-W 10700/7.5

1977

DMA 4563 I SE-SERIES V877

USGS  
Historical File  
National Mapping Div.

MAY 20 1981  
2700