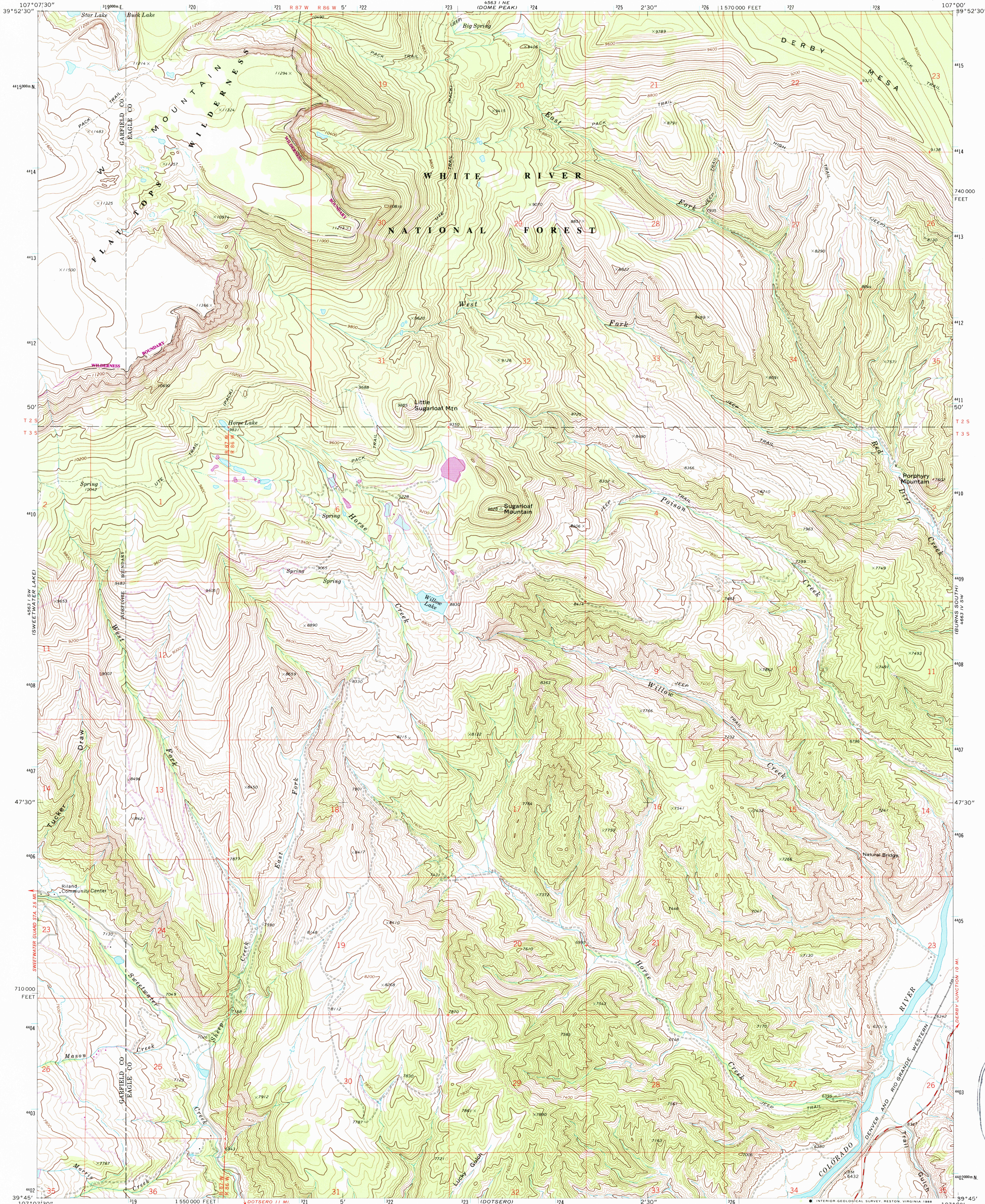


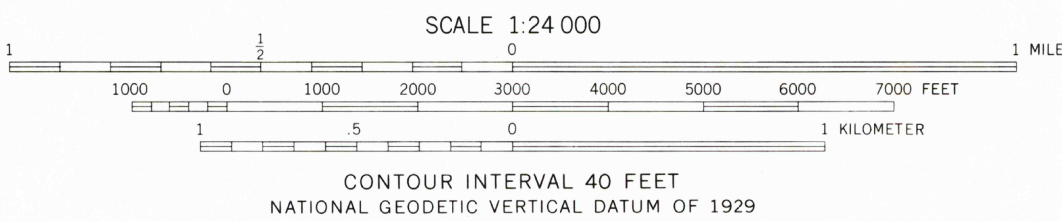
UNITED STATES
DEPARTMENT OF THE INTERIOR
GEOLOGICAL SURVEY

SUGARLOAF MOUNTAIN QUADRANGLE
COLORADO
7.5 MINUTE SERIES (TOPOGRAPHIC)

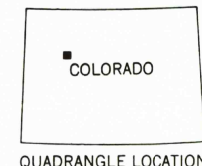


Mapped, edited, and published by the Geological Survey
Control by USGS, and NOS/NOAA, and U. S. Forest Service
Topography by photogrammetric methods from aerial photographs
taken 1964-65. Field checked 1974. Map edited 1977
Projection and 10,000-foot grid ticks: Colorado
coordinate system, central zone (Lambert conformal conic)
1000-meter Universal Transverse Mercator grid ticks,
zone 13, shown in blue. 1927 North American Datum
Fine red dashed lines indicate selected fence lines
Where omitted, land lines have not been established
To place on the predicted North American Datum 1983
move the projection lines 6 meters north and
53 meters east as shown by dashed corner ticks

There may be private inholdings within the boundaries
of the National or State reservations shown on this map



THIS MAP COMPLIES WITH NATIONAL MAP ACCURACY STANDARDS
FOR SALE BY U. S. GEOLOGICAL SURVEY, DENVER, COLORADO 80225, OR RESTON, VIRGINIA 22092
A FOLDER DESCRIBING TOPOGRAPHIC MAPS AND SYMBOLS IS AVAILABLE ON REQUEST



Revisions shown in purple compiled from
aerial photographs taken 1983 and other
source data. Partial field check by
U. S. Forest Service. Map edited 1987

ROAD CLASSIFICATION
Primary highway, hard surface ——— Light-duty road, hard or improved surface ———
Secondary highway, hard surface ——— Unimproved road ———
Interstate Route ——— U. S. Route ——— State Route ———

SUGARLOAF MOUNTAIN, COLO.
39107-G1-TF-024

1977
PHOTOREVISED 1987
DMA 4563 I SE-SERIES V877

USGS NMHD HISTORICAL MAP
SEP 20 1988
REC'D FILE COPY