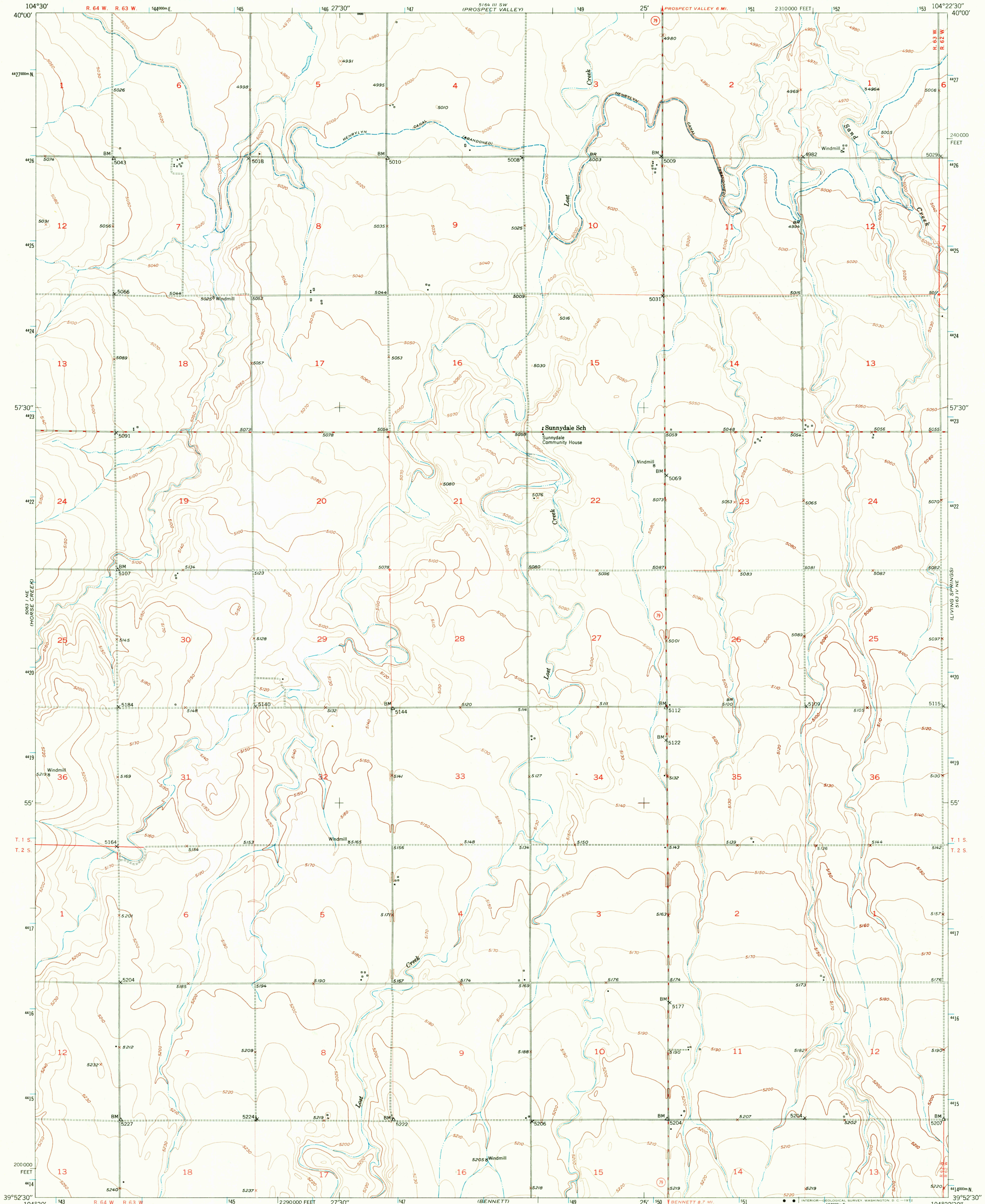
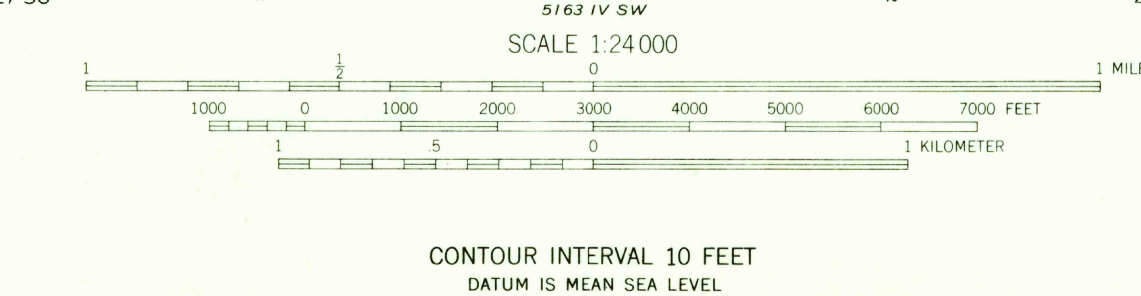
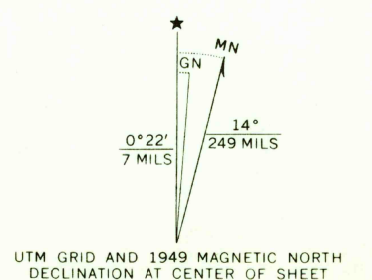


UNITED STATES  
DEPARTMENT OF THE INTERIOR  
GEOLOGICAL SURVEY

SUNNYDALE QUADRANGLE  
COLORADO-ADAMS CO.  
7.5 MINUTE SERIES (TOPOGRAPHIC)



Mapped, edited, and published by the Geological Survey  
as part of the Department of the Interior program  
for the development of the Missouri River Basin  
Control by USGS and USC&GS  
Culture and drainage in part compiled from  
aerial photographs taken September 1948  
Topography by plane-table methods, 1949  
Polyconic projection. 1927 North American datum.  
10,000-foot grid based on Colorado coordinate system,  
north zone  
1000-meter Universal Transverse Mercator grid ticks,  
zone 13, shown in blue



THIS MAP COMPLIES WITH NATIONAL MAP ACCURACY STANDARDS  
FOR SALE BY U. S. GEOLOGICAL SURVEY, DENVER, COLORADO 80225, OR WASHINGTON, D. C. 20242  
A FOLDER DESCRIBING TOPOGRAPHIC MAPS AND SYMBOLS IS AVAILABLE ON REQUEST

ROAD CLASSIFICATION  
HARD-SURFACE ALL WEATHER ROADS DRY WEATHER ROADS  
Heavy-duty - 4 LANE 8 LANE Improved dirt -  
Medium-duty - 4 LANE 8 LANE Unimproved dirt -  
Loose-surface, graded, or narrow hard-surface -  
U. S. Route State Route

SUNNYDALE, COLO.  
N3952.5-W10422.5/7.5

1949

AMS 5163 IV NW-SERIES V877

Historical FILE  
TOPOGRAPHIC DIVISION

MAY 24 1972

1275