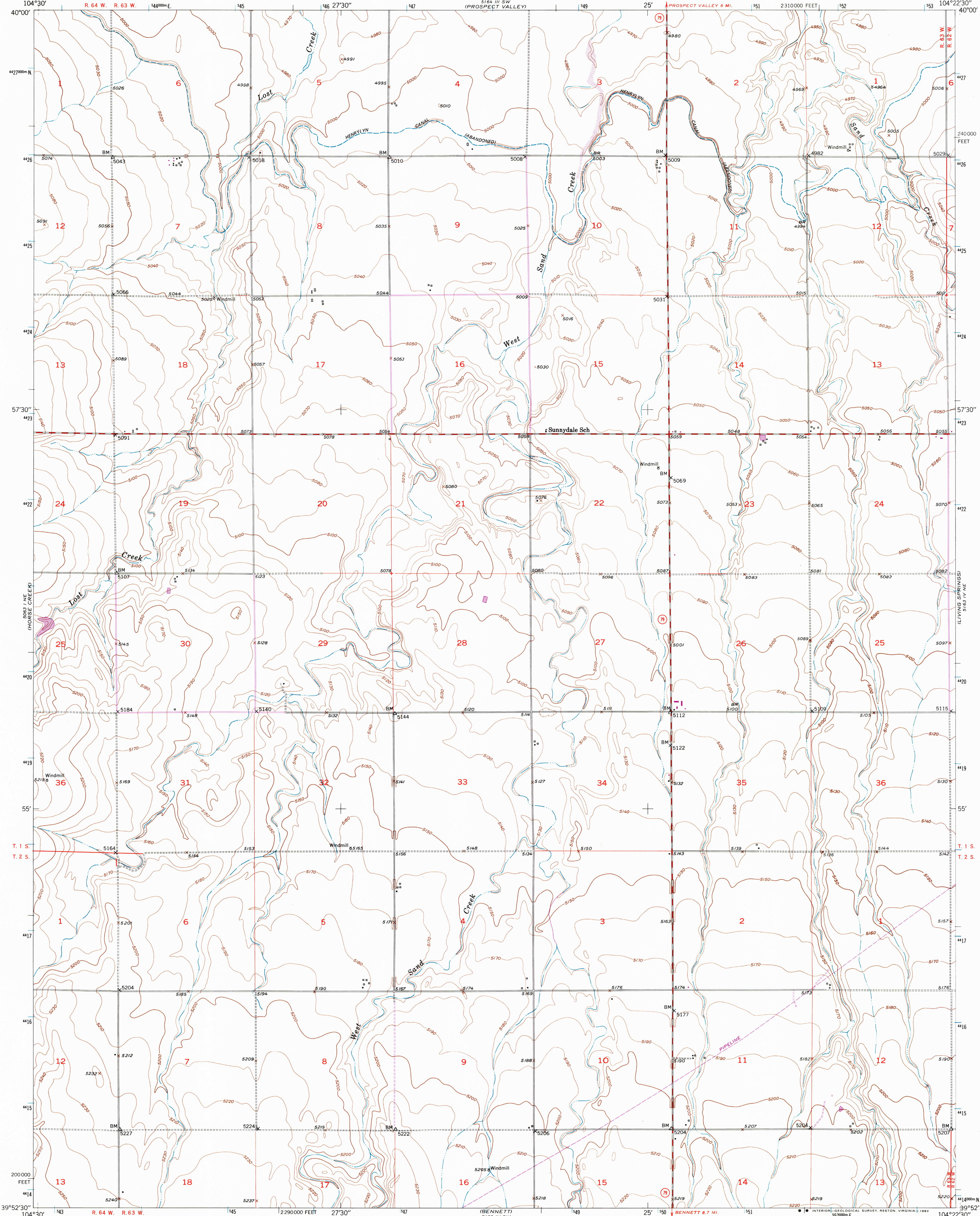
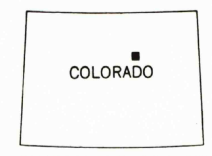
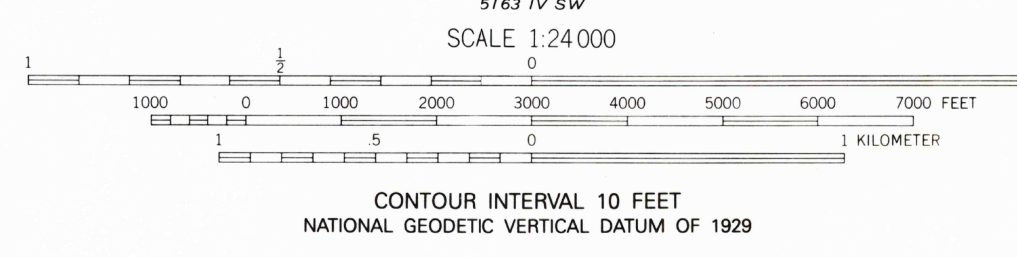
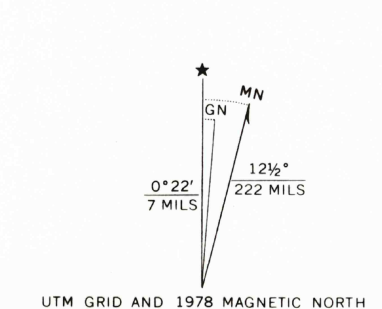


UNITED STATES  
DEPARTMENT OF THE INTERIOR  
GEOLOGICAL SURVEY

SUNNYDALE QUADRANGLE  
COLORADO-ADAMS CO.  
7.5 MINUTE SERIES (TOPOGRAPHIC)



Produced by the United States Geological Survey  
as part of the Department of the Interior Program  
for the development of the Missouri River Basin  
Control by USGS and NOS/NOAA  
Compiled from aerial photographs taken 1948. Topography  
by plane-table methods, 1949  
North American Datum of 1927 (NAD 27). Projection and  
10,000-foot grid ticks: Colorado Coordinate System,  
north zone (Lambert Conformal Conic)  
1000-meter Universal Transverse Mercator grid ticks, zone 13,  
shown in blue  
The difference between NAD 27 and North American Datum of  
1983 (NAD 83) for 7.5 minute intersections is given in USGS  
Bulletin 1875. The NAD 83 is shown by dashed corner ticks  
Revisions shown in purple compiled from aerial photographs  
taken 1975 and other source data. This information not  
field checked. Map edited 1978



ROAD CLASSIFICATION  
Primary highway, hard surface  
Secondary highway, hard surface  
Unimproved road  
Interstate Route  
U. S. Route  
State Route

SUNNYDALE, COLO  
39104-H4-TF-024

1949  
PHOTOREVISED 1978  
DMA 5163 IV NW-SERIES V877

