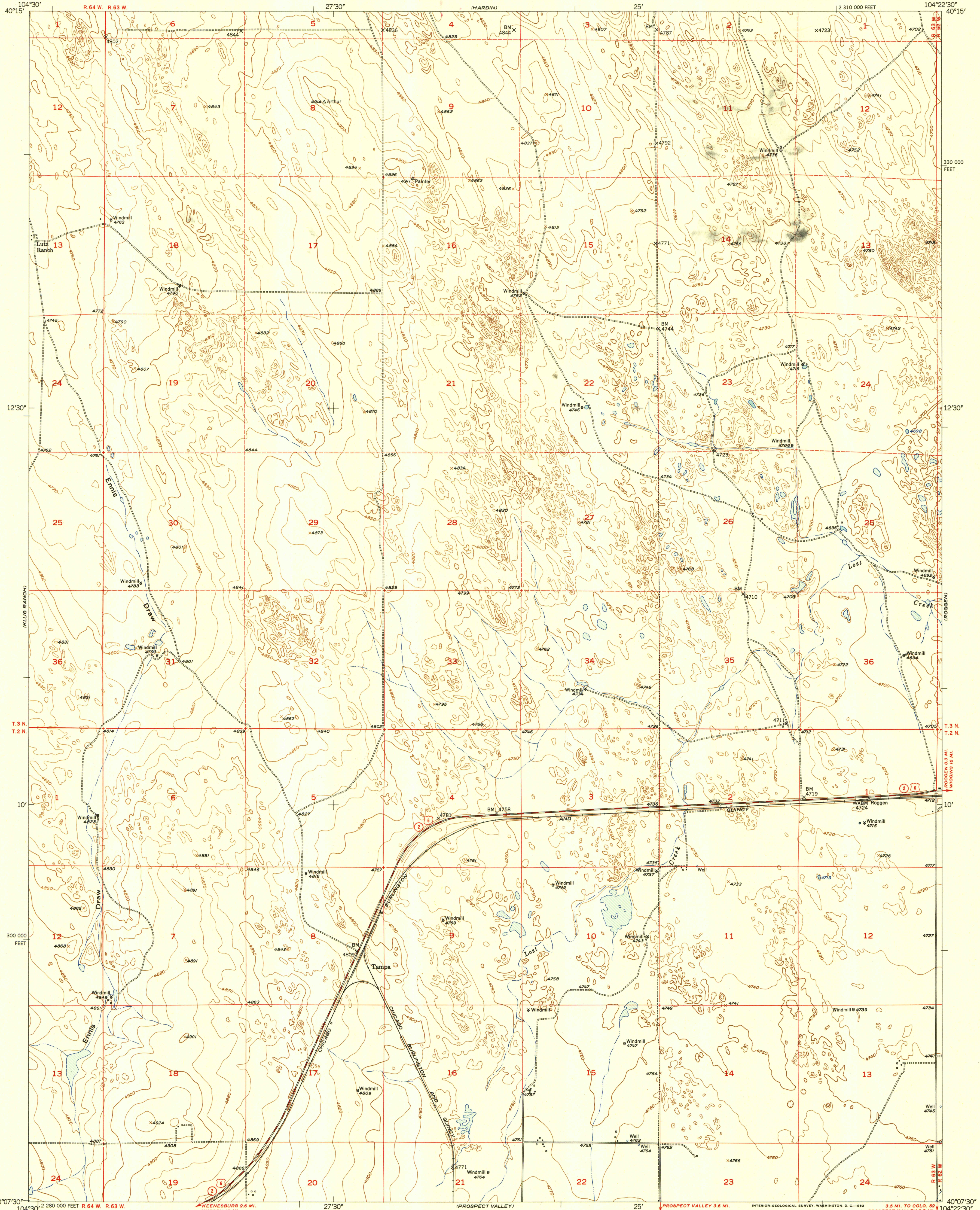
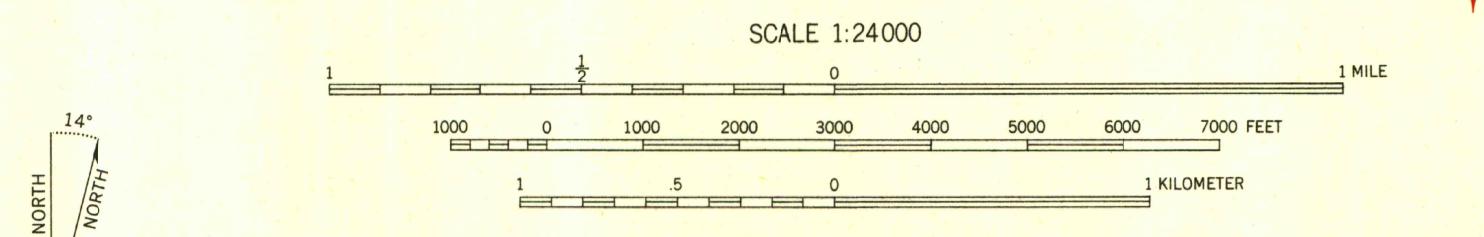


UNITED STATES
DEPARTMENT OF THE INTERIOR
GEOLOGICAL SURVEY

TAMPA QUADRANGLE
COLORADO-WELD CO.
7.5 MINUTE SERIES (TOPOGRAPHIC)



Mapped, edited, and published by the Geological Survey as part of the Department of the Interior program for the development of the Missouri River Basin. Control by USGS and USC&GS. Culture and drainage in part compiled from aerial photographs taken October 1948. Topography by plane-table surveys 1950. Polyconic projection. 1927 North American datum. 10,000-foot grid based on Colorado coordinate system, north zone. Dashed land lines indicate approximate location.



ROAD CLASSIFICATION

Heavy-duty	4 LANE 16 LANE	Light-duty
Medium-duty	4 LANE 16 LANE	Unimproved dirt

U.S. Route State Route

TRUE NORTH
MAGNETIC NORTH
APPROXIMATE MEAN DECLINATION, 1950

THIS MAP COMPLIES WITH NATIONAL MAP ACCURACY STANDARDS
FOR SALE BY U. S. GEOLOGICAL SURVEY, FEDERAL CENTER, DENVER, COLORADO OR WASHINGTON 25, D. C.
A FOLDER DESCRIBING TOPOGRAPHIC MAPS AND SYMBOLS IS AVAILABLE ON REQUEST

TAMPA, COLO.
N40075-W104225/7.5

1950

OFFICE COPY

LIBRARY USE ONLY