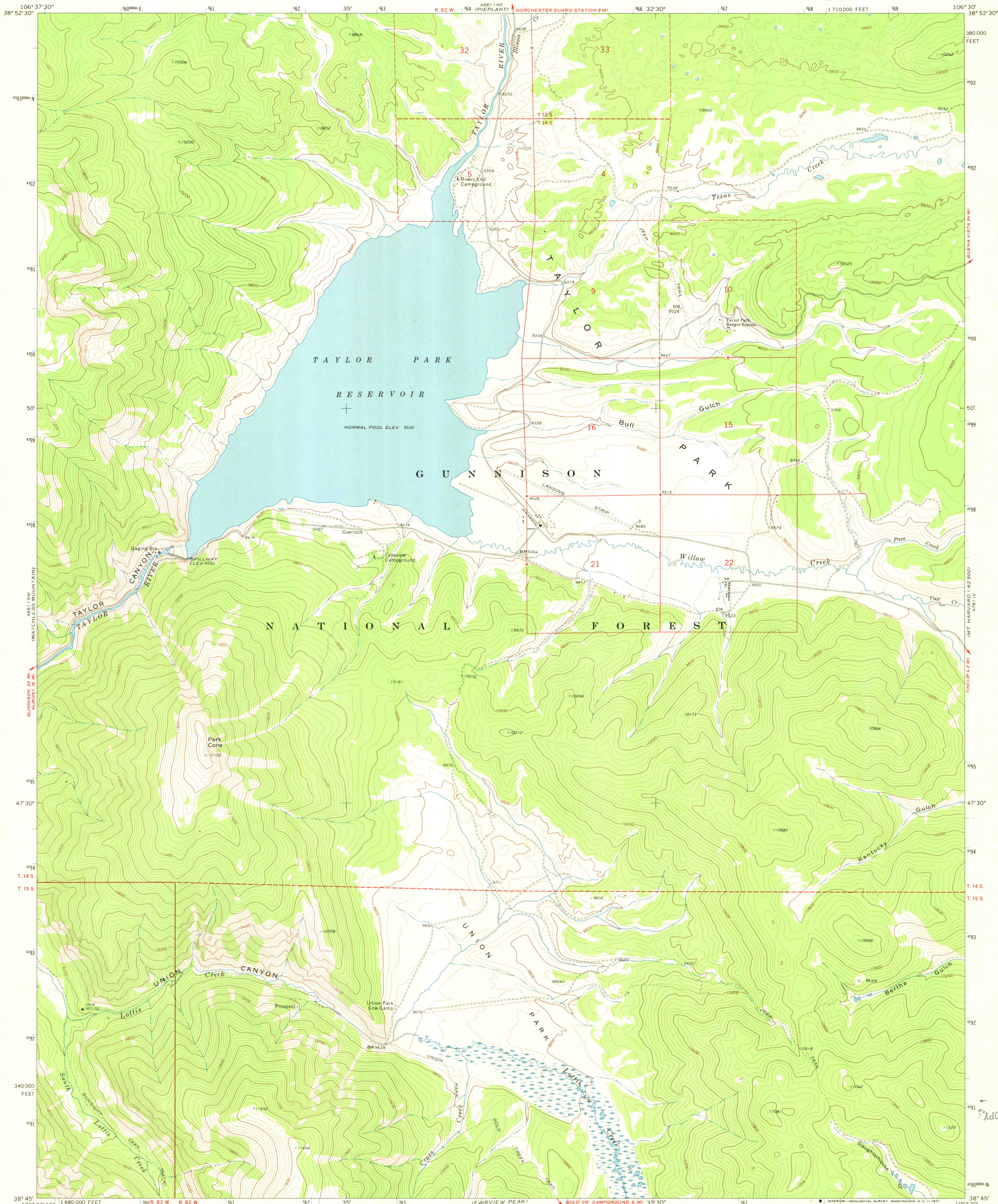
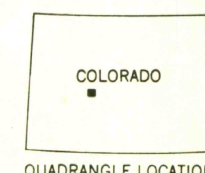
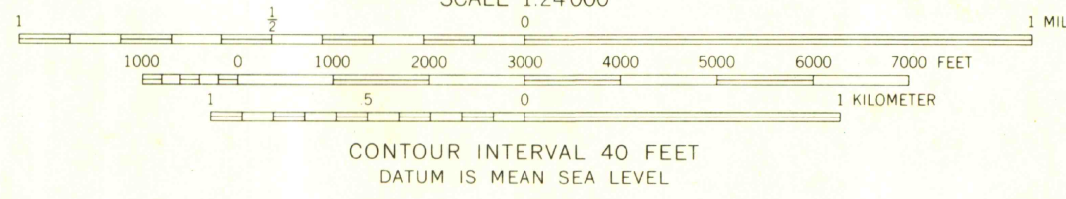
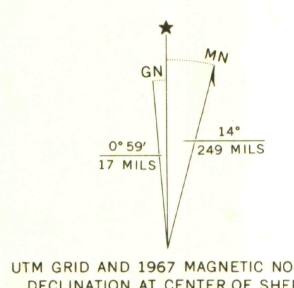


UNITED STATES
DEPARTMENT OF THE INTERIOR
GEOLOGICAL SURVEY

TAYLOR PARK RESERVOIR QUADRANGLE
COLORADO—GUNNISON CO.
7.5 MINUTE SERIES (TOPOGRAPHIC)
SE/4 TAYLOR PARK 15' QUADRANGLE



Mapped, edited, and published by the Geological Survey
Control by USGS and USC&GS
Topography by photogrammetric methods from aerial
photographs taken 1966. Field checked 1967
Polyconic projection. 1927 North American datum
10,000-foot grid based on Colorado coordinate system,
central zone
1000-meter Universal Transverse Mercator grid ticks,
zone 13, shown in blue
Fine red dashed lines indicate selected fence lines
Certain land lines are omitted because of insufficient data



ROAD CLASSIFICATION
Light-duty ————— Unimproved dirt - - - - -

TAYLOR PARK RESERVOIR, COLO.
SE/4 TAYLOR PARK 15' QUADRANGLE
N3845-W10630/7.5

1967
AMS 4661 I SE—SERIES V877

THIS MAP COMPLIES WITH NATIONAL MAP ACCURACY STANDARDS
FOR SALE BY U.S. GEOLOGICAL SURVEY, DENVER, COLORADO 80225, OR WASHINGTON, D.C. 20242
A FOLDER DESCRIBING TOPOGRAPHIC MAPS AND SYMBOLS IS AVAILABLE ON REQUEST

LIBRARY USE ONLY
G 3700
S24
G4
MAP ROOM