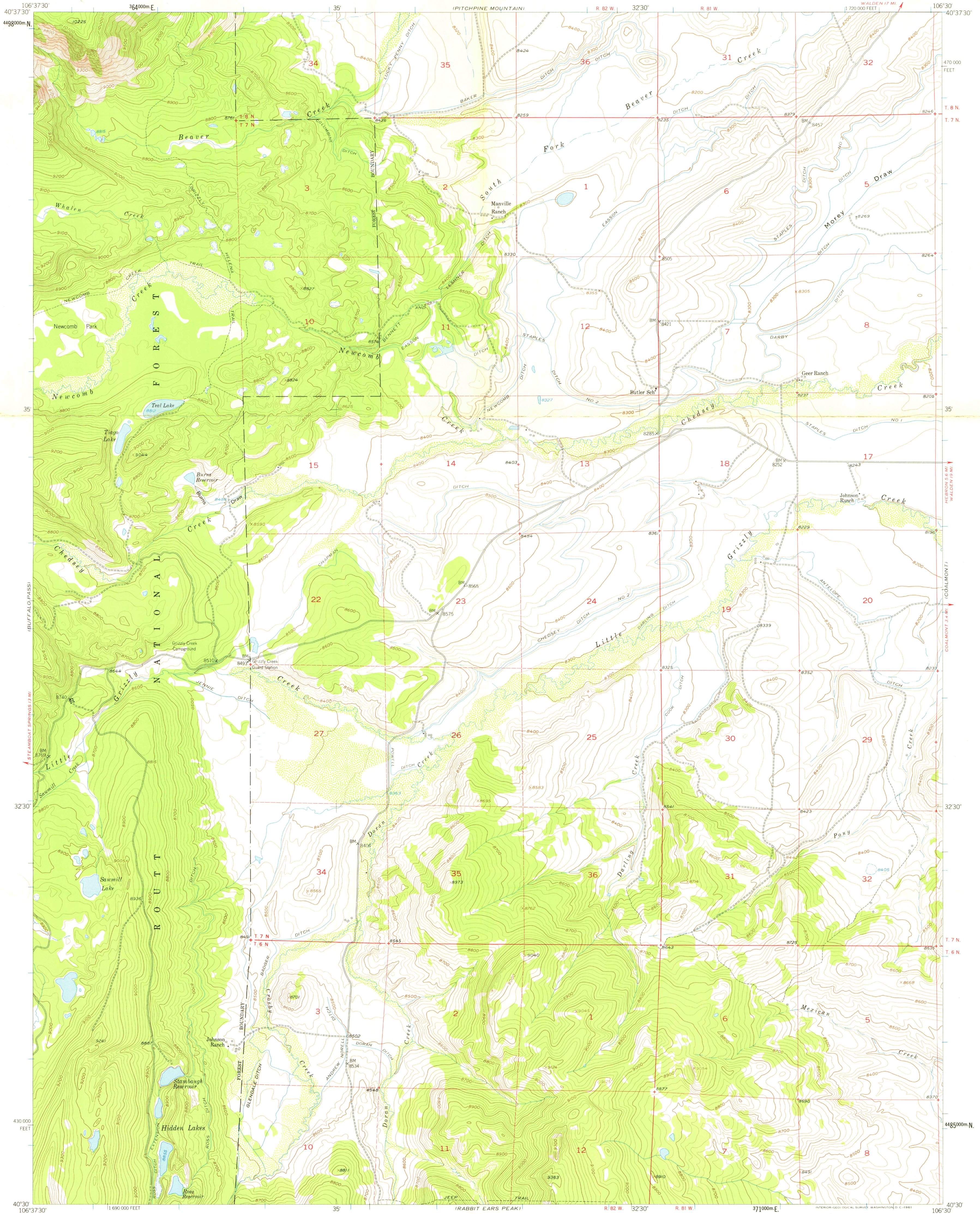
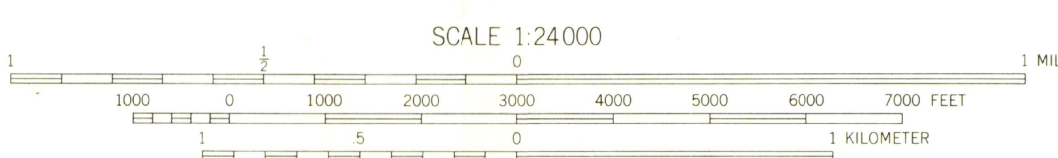


U. Park

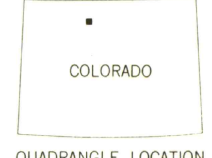


Mapped, edited, and published by the Geological Survey as part of the Department of the Interior program for the development of the Missouri River Basin Control by USGS, USC&GS, and USFS
Topography from aerial photographs by multiple methods
Aerial photographs taken 1952. Field check 1955
Polyconic projection. 1927 North American datum
10,000-foot grid based on Colorado coordinate system, north zone
1000-meter Universal Transverse Mercator grid ticks, zone 13, shown in blue
Dashed land lines indicate approximate locations
Certain land lines are omitted in T. 6, 7 and 8 N., R. 82 W. because of insufficient data
Unchecked elevations are shown in brown



CONTOUR INTERVAL 20 FEET
DATUM IS MEAN SEA LEVEL

OFFICE COPY
LIBRARY USE ONLY



ROAD CLASSIFICATION
Light-duty ——— Unimproved dirt - - - - -

JAN 23 2006

TEAL LAKE, COLO.
N4030-W10630/7.5
1955

G 3700
824
04
MAP ROOM

THIS MAP COMPLIES WITH NATIONAL MAP ACCURACY STANDARDS
FOR SALE BY U. S. GEOLOGICAL SURVEY, DENVER 25, COLORADO OR WASHINGTON 25, D. C.
A FOLDER DESCRIBING TOPOGRAPHIC MAPS AND SYMBOLS IS AVAILABLE ON REQUEST