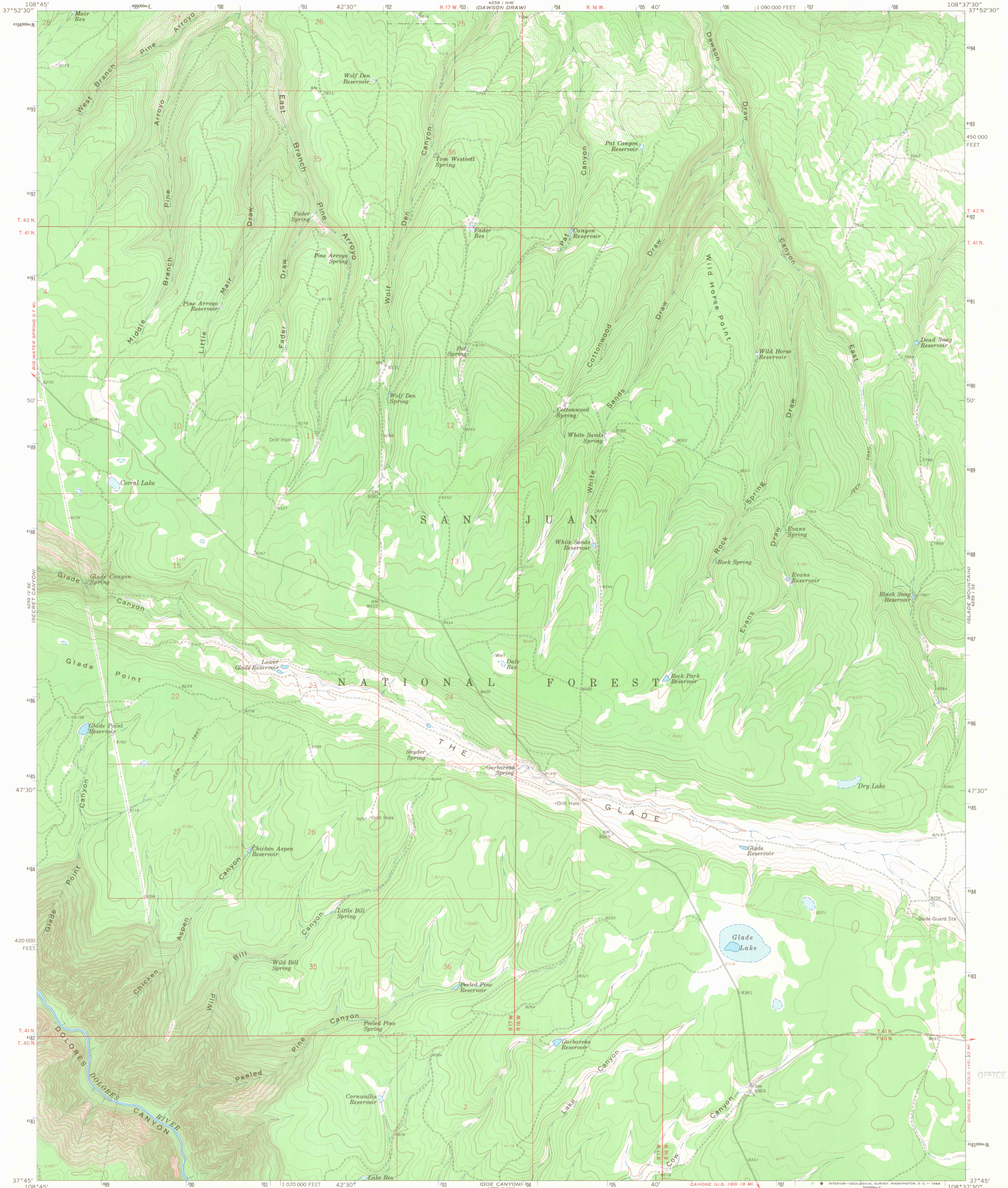


4259 I SW  
DOE DAVIS TULLI

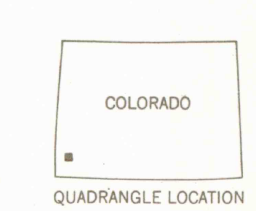
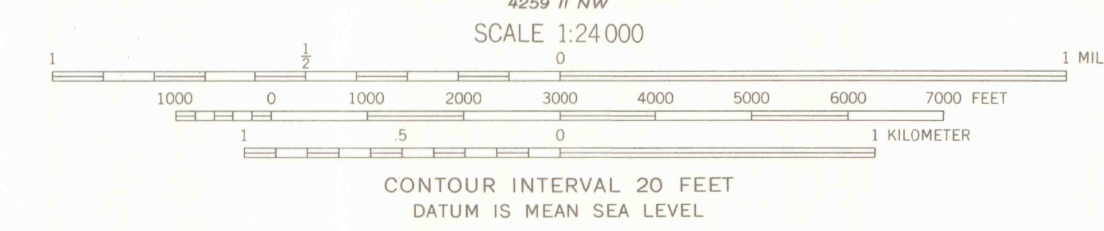
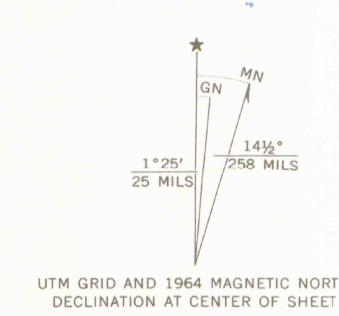
4259 I NE  
MC KEENA FEAYO

UNITED STATES  
DEPARTMENT OF THE INTERIOR  
GEOLOGICAL SURVEY

THE GLADE QUADRANGLE  
COLORADO—DOLORES CO.  
7.5 MINUTE SERIES (TOPOGRAPHIC)



Mapped, edited, and published by the Geological Survey  
Control by USGS and USC&GS  
Topography by photogrammetric methods from aerial photographs taken 1963. Field checked 1964  
Polyconic projection. 1927 North American datum  
10,000-foot grid based on Colorado coordinate system, south zone  
1000-meter Universal Transverse Mercator grid ticks, zone 12, shown in blue  
Fine red dashed lines indicate selected fence lines  
Where omitted, land lines have not been established or are not shown because of insufficient data



ROAD CLASSIFICATION  
Light-duty \_\_\_\_\_ Unimproved dirt \_\_\_\_\_

THIS MAP COMPLIES WITH NATIONAL MAP ACCURACY STANDARDS  
FOR SALE BY U.S. GEOLOGICAL SURVEY, DENVER, COLORADO 80225, OR WASHINGTON, D. C. 20242  
A FOLDER DESCRIBING TOPOGRAPHIC MAPS AND SYMBOLS IS AVAILABLE ON REQUEST

THE GLADE, COLO.  
N3745—W10837.5/7.5

1964  
AMS 4259 1 SW—SERIES V877

OFFICE COPY

LIBRARY USE ONLY