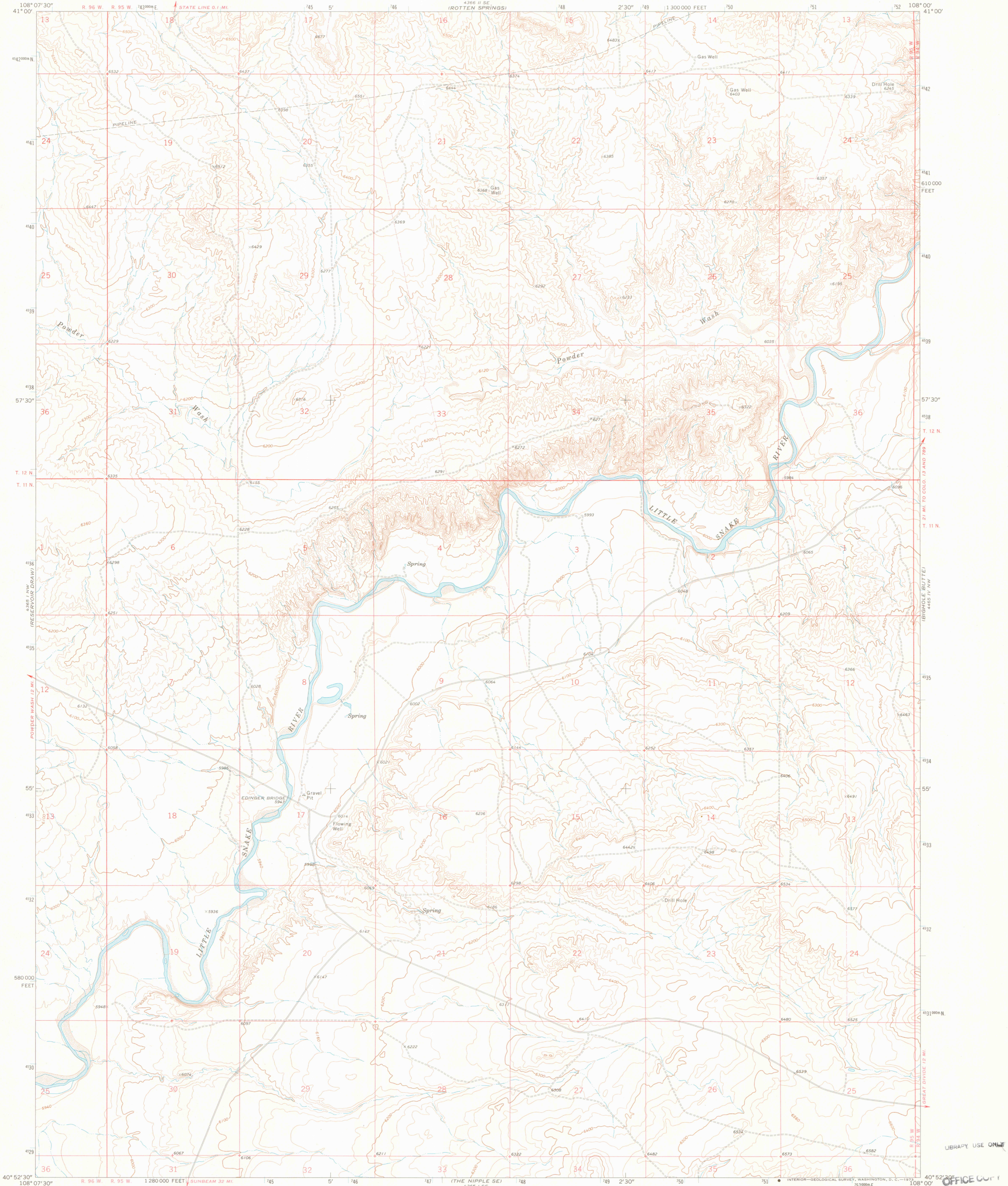
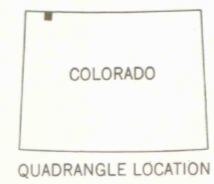
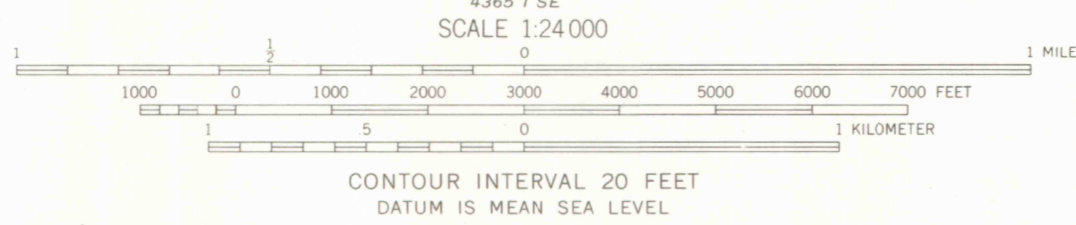
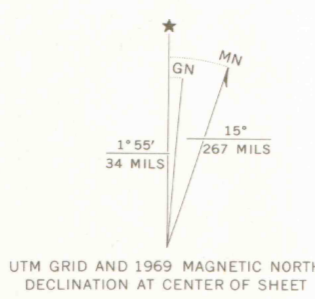


UNITED STATES  
DEPARTMENT OF THE INTERIOR  
GEOLOGICAL SURVEY

THE NIPPLE NE QUADRANGLE  
COLORADO—MOFFAT CO.  
7.5 MINUTE SERIES (TOPOGRAPHIC)



Mapped, edited, and published by the Geological Survey  
Control by USGS and USC&GS  
Topography by photogrammetric methods from aerial  
photographs taken 1968. Field checked 1969.  
Polyconic projection. 1927 North American datum  
10,000-foot grid based on Colorado coordinate system,  
north zone  
1000-meter Universal Transverse Mercator grid ticks,  
zone 12, shown in blue  
Fine red dashed lines indicate selected fence lines



ROAD CLASSIFICATION  
Light-duty road, all weather, Unimproved road, fair or dry weather  
Improved surface -----

THIS MAP COMPLIES WITH NATIONAL MAP ACCURACY STANDARDS  
FOR SALE BY U. S. GEOLOGICAL SURVEY, DENVER, COLORADO 80225, OR WASHINGTON, D. C. 20540  
A FOLDER DESCRIBING TOPOGRAPHIC MAPS AND SYMBOLS IS AVAILABLE ON REQUEST



LIBRARY  
COLORADO SCHOOL OF MINES  
GOLDEN, COLORADO

THE NIPPLE NE, COLO.  
N4052.5-W10800/7.5  
1969  
AMS 4365 I NE—SERIES W877

G  
3701  
C222  
S24  
U5  
C.7

LIBRARY USE ONLY

OFFICE COPY

IMA (Vergara Springs)