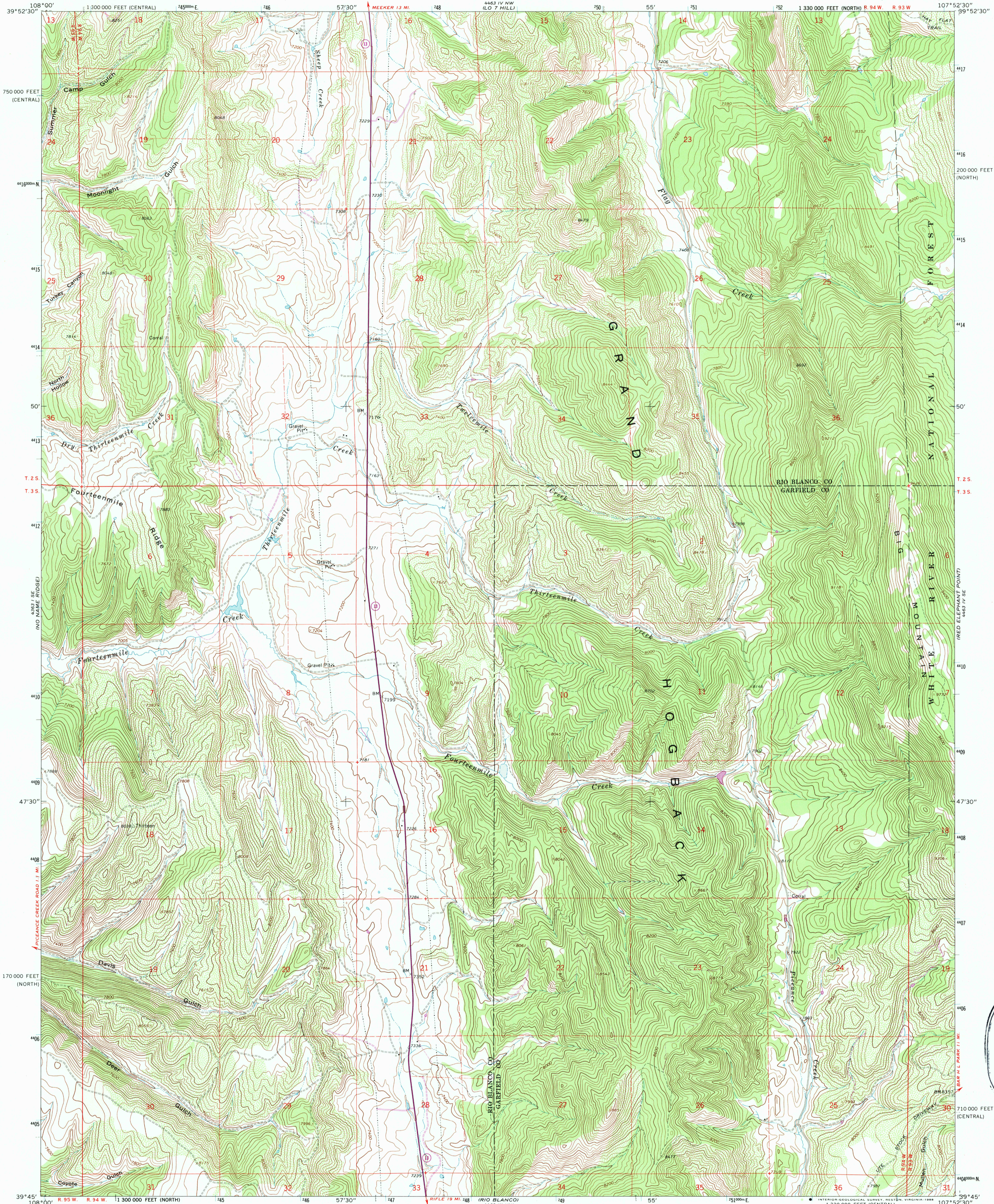


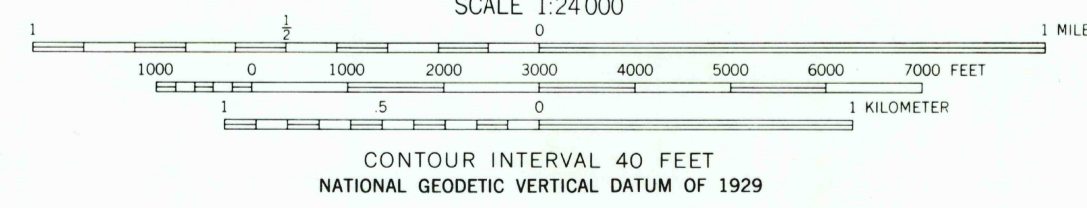
UNITED STATES  
DEPARTMENT OF THE INTERIOR  
GEOLOGICAL SURVEY

THIRTEENMILE CREEK QUADRANGLE  
COLORADO  
7.5 MINUTE SERIES (TOPOGRAPHIC)

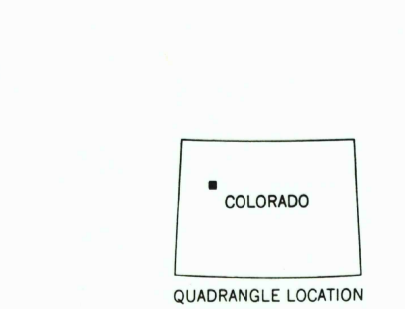


Control by USGS and NOS/NOAA  
Topography by photogrammetric methods from aerial photographs taken 1965. Field checked 1966.  
Polyconic projection. 1927 North American Datum  
10,000-foot grids based on Colorado coordinate system, north and central zones  
1000-meter Universal Transverse Mercator grid ticks, zone 13, shown in blue  
Fine red dashed lines indicate selected fence lines  
Certain land lines are omitted because of insufficient data  
To place on the predicted North American Datum 1983 move the projection lines 6 meters north and 55 meters east as shown by dashed corner ticks

UTM GRID AND 1987 MAGNETIC NORTH DECLINATION AT CENTER OF SHEET  
There may be private inholdings within the boundaries of the National or State reservations shown on this map



THIS MAP COMPLIES WITH NATIONAL MAP ACCURACY STANDARDS  
FOR SALE BY U. S. GEOLOGICAL SURVEY  
DENVER, COLORADO 80225, OR RESTON, VIRGINIA 22092  
A FOLDER DESCRIBING TOPOGRAPHIC MAPS AND SYMBOLS IS AVAILABLE ON REQUEST



Revisions shown in purple and woodland compiled from aerial photographs taken 1982 and other source data.  
Partial check by U. S. Forest Service. Map edited 1987

ROAD CLASSIFICATION  
Medium-duty — Light-duty  
Unimproved dirt —  
State Route  
Primary highway, hard surface  
THIRTEENMILE CREEK, COLO.  
39107-G8-TF-024  
1966  
PHOTOREVISED 1987  
DMA 4463 IV SW—SERIES V877

USGS (AND HISTORICAL) MAP  
JUN 16 1988  
REC'D FILE COPY