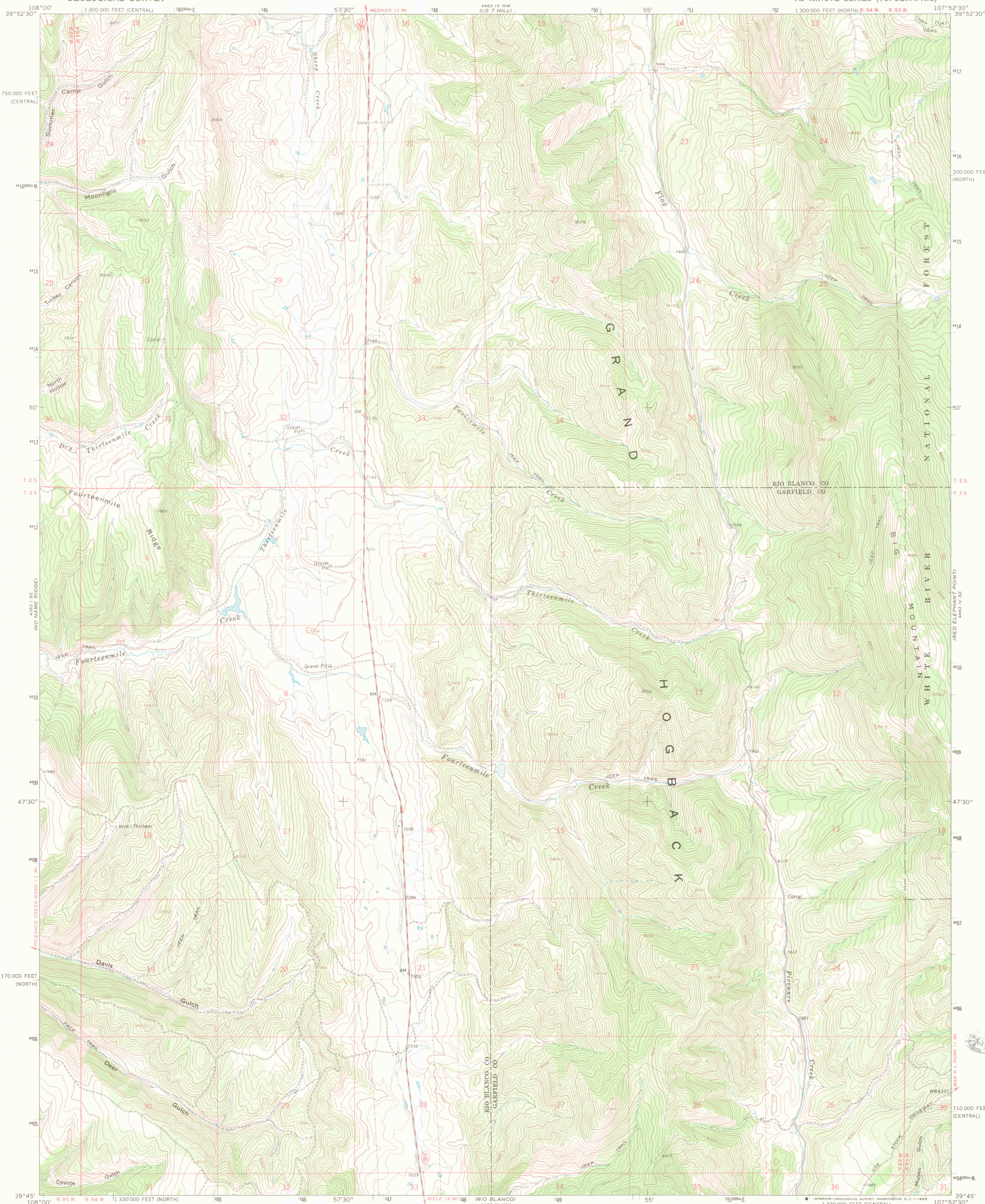


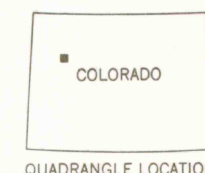
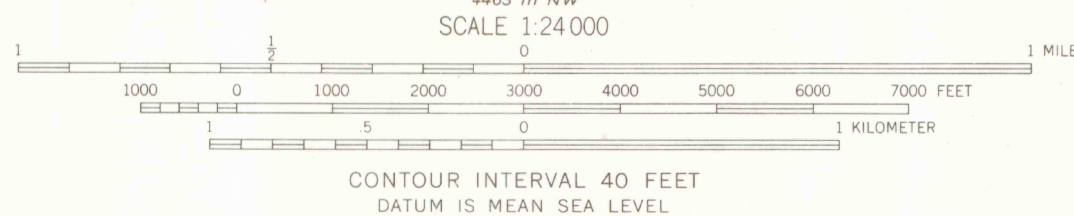
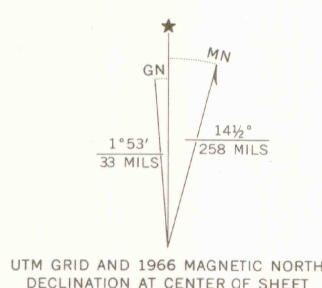
UNITED STATES
DEPARTMENT OF THE INTERIOR
GEOLOGICAL SURVEY

MAP LIBRARY
KENT STATE UNIVERSITY

THIRTEENMILE CREEK QUADRANGLE
COLORADO
7.5 MINUTE SERIES (TOPOGRAPHIC)



Mapped, edited, and published by the Geological Survey
Control by USGS and USC&GS
Topography by photogrammetric methods from aerial
photographs taken 1965. Field checked 1966.
Polyconic projection. 1927 North American datum
10,000-foot grids based on Colorado coordinate system,
north and central zones
1000-meter Universal Transverse Mercator grid ticks,
zone 13, shown in blue
Fine red dashed lines indicate selected fence lines
Certain land lines are omitted because of insufficient data



ROAD CLASSIFICATION
Medium-duty ——— Light-duty ———
Unimproved dirt ———
State Route ———

THIRTEENMILE CREEK, COLO.
N3945—W10752.5/7.5

1966

AMS 4463 IV SW—SERIES V877

THIS MAP COMPLIES WITH NATIONAL MAP ACCURACY STANDARDS
FOR SALE BY U.S. GEOLOGICAL SURVEY, DENVER, COLORADO 80225, OR WASHINGTON, D. C. 20242
A FOLDER DESCRIBING TOPOGRAPHIC MAPS AND SYMBOLS IS AVAILABLE ON REQUEST

JAN 03 2002

ARTHUR L. LARSEN
COLORADO SCHOOL OF MINES

OFFICE COPY
LIBRARY USE ONLY

G 3700
s24
G4
MAP ROOM