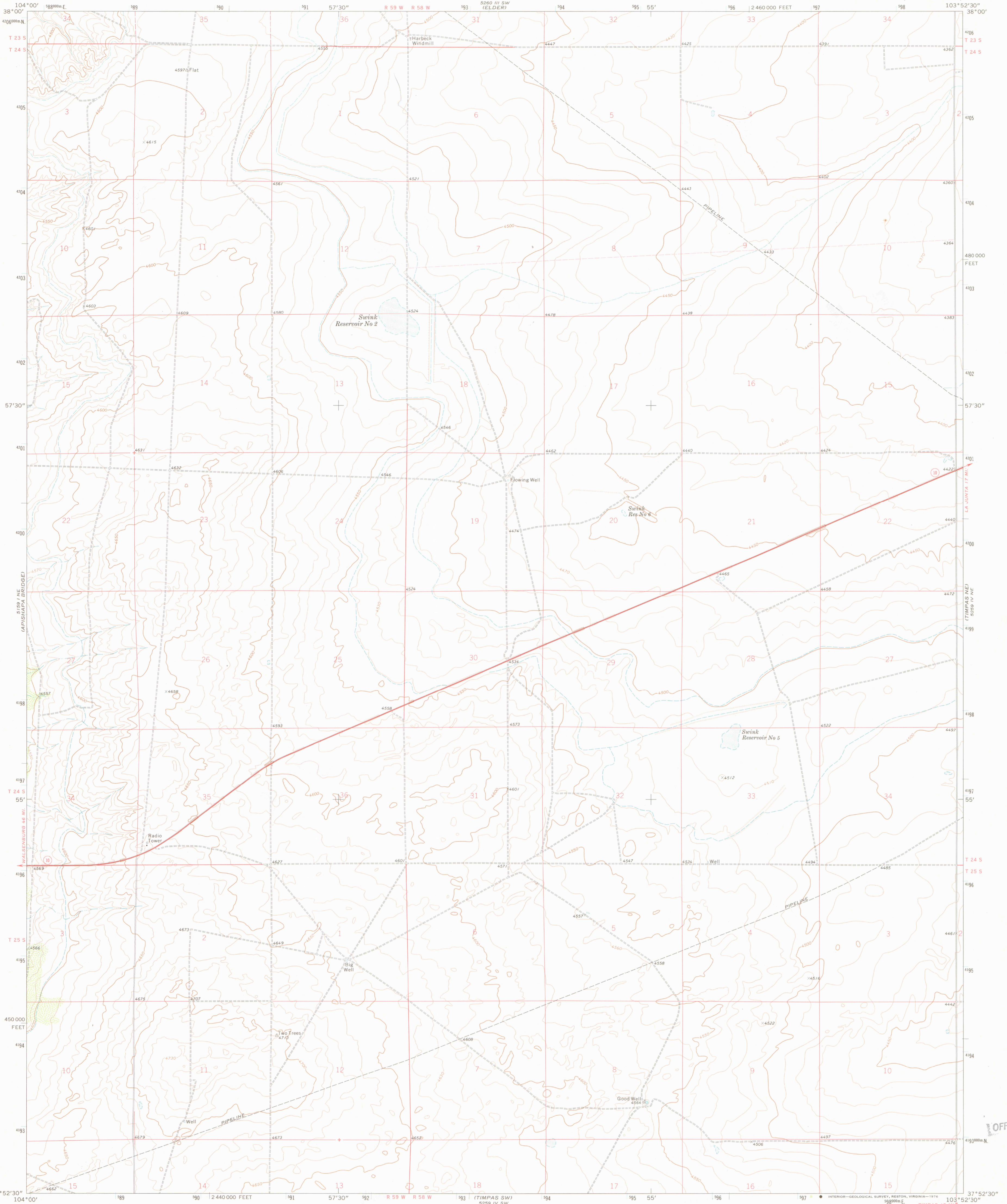


5850 1/4 SE  
5850 1/4 SW  
5850 1/4 NE  
5850 1/4 NW

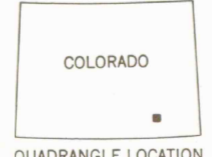
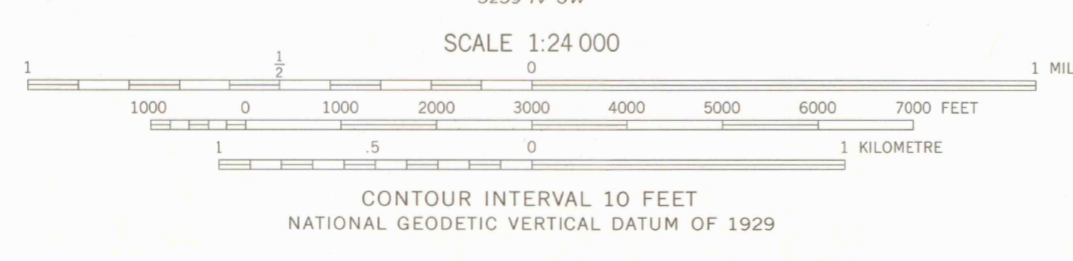
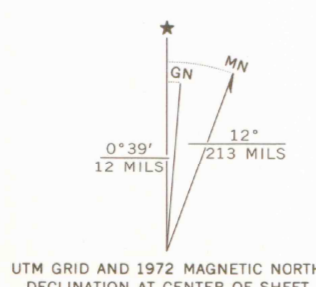
UNITED STATES  
DEPARTMENT OF THE INTERIOR  
GEOLOGICAL SURVEY

TIMPAS NW QUADRANGLE  
COLORADO—OTERO CO.  
7.5 MINUTE SERIES (TOPOGRAPHIC)

5850 1/4 SE  
5850 1/4 SW  
5850 1/4 NE  
5850 1/4 NW



Mapped, edited, and published by the Geological Survey  
Control by USGS and NOS/NOAA  
Topography by photogrammetric methods from aerial photographs taken 1971. Field checked 1972  
Projection and 10,000-foot grid ticks: Colorado coordinate system, south zone (Lambert conformal conic) 1000-metre Universal Transverse Mercator grid ticks, zone 13, shown in blue. 1927 North American datum  
Fine red dashed lines indicate selected fence lines



ROAD CLASSIFICATION

Primary highway, hard surface	Light-duty road, hard or improved surface
Secondary highway, hard surface	Unimproved road
Interstate Route	U. S. Route
	State Route

OFFICE COPY

THIS MAP COMPLIES WITH NATIONAL MAP ACCURACY STANDARDS  
FOR SALE BY U.S. GEOLOGICAL SURVEY, DENVER, COLORADO 80225, OR RESTON, VIRGINIA 22092  
A FOLDER DESCRIBING TOPOGRAPHIC MAPS AND SYMBOLS IS AVAILABLE ON REQUEST

TIMPAS NW, COLO.  
N3752.5—W10352.5/7.5  
1972

LIBRARY USE ONLY

AMS 5259 IV NW—SERIES V877