

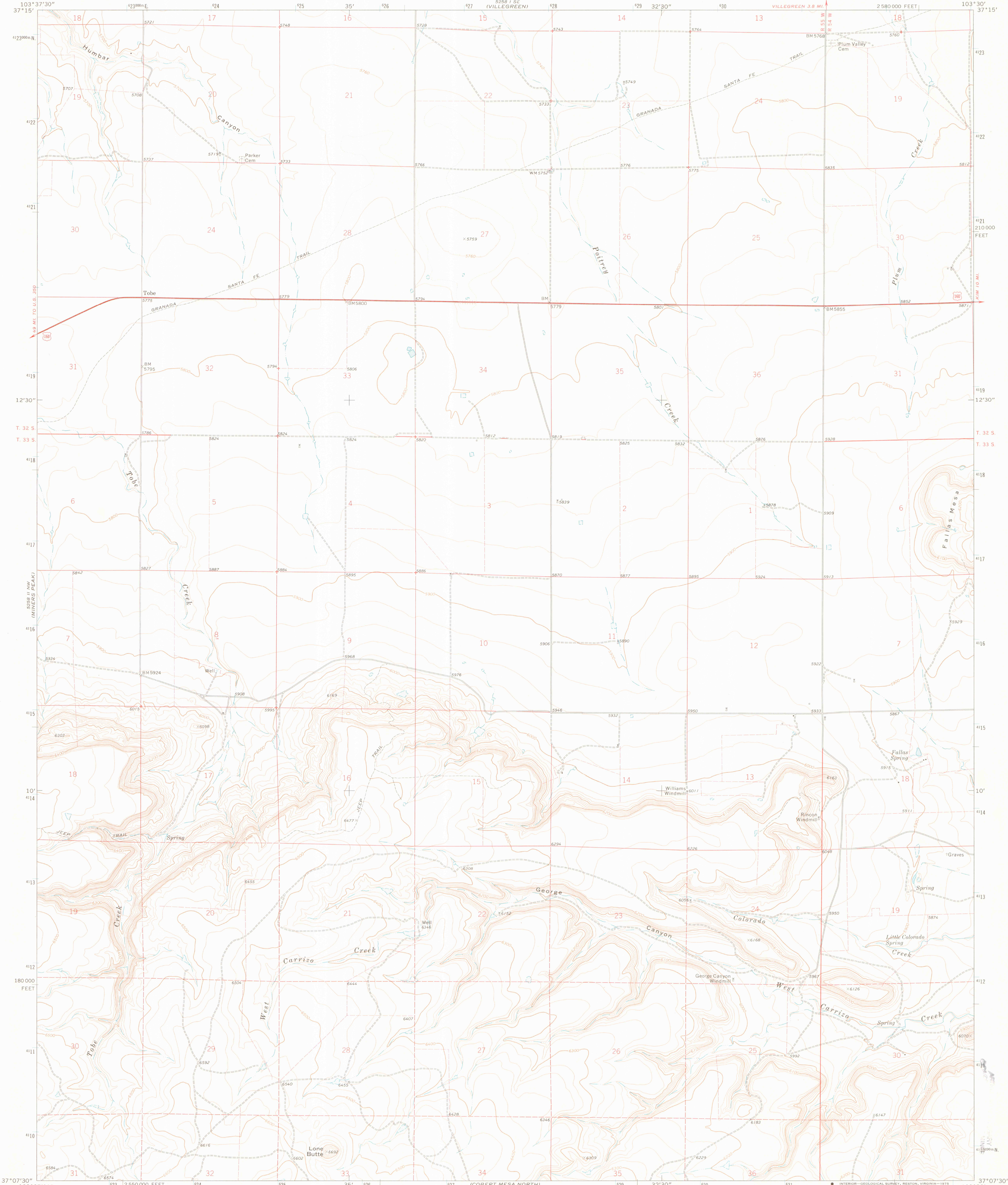
I 19.21/3: C71/T628

SOUTHWEST MISSOURI STATE UNIVERSITY LIBRARY U. S. DEPOSITORY COPY

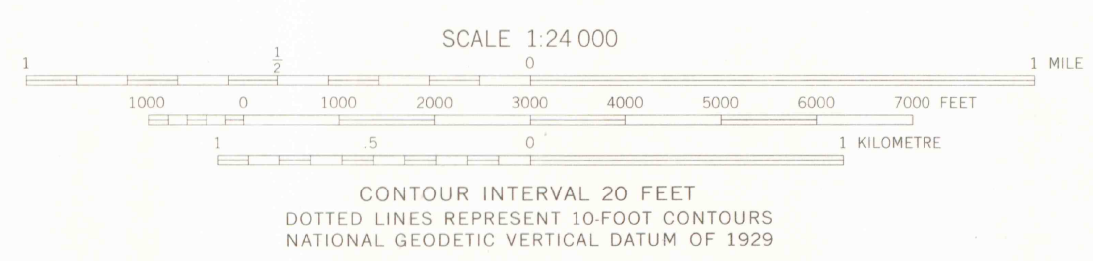
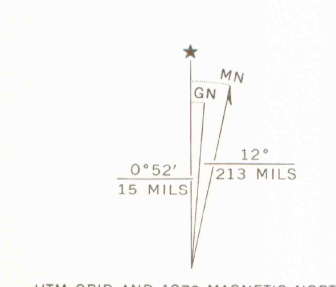
UNITED STATES DEPARTMENT OF THE INTERIOR GEOLOGICAL SURVEY

DEC 15 1975

TOBE QUADRANGLE COLORADO-LAS ANIMAS CO. 7.5 MINUTE SERIES (TOPOGRAPHIC)



Mapped, edited, and published by the Geological Survey Control by USGS and NOS/NOAA Topography by photogrammetric methods from aerial photographs taken 1971. Field checked 1972 Projection and 10,000-foot grid ticks; Colorado coordinate system, south zone (Lambert conformal conic) 1000-metre Universal Transverse Mercator grid ticks, zone 13, shown in blue. 1927 North American datum Fine red dashed lines indicate selected fence lines



ROAD CLASSIFICATION table with symbols for primary, secondary, and unimproved roads, and U.S. and State routes.

S.M.S. LIBRARY

THIS MAP COMPLIES WITH NATIONAL MAP ACCURACY STANDARDS FOR SALE BY U.S. GEOLOGICAL SURVEY, DENVER, COLORADO 80225, OR RESTON, VIRGINIA 22092 A FOLDER DESCRIBING TOPOGRAPHIC MAPS AND SYMBOLS IS AVAILABLE ON REQUEST

SMSU MAP LIBRARY COLORADO

TOBE, COLO. N3707.5-W10330/7.5 1972 AMS 5258 II NE-SERIES V87

G4310.C13/T628/24/I19.21/3/1992

NOV 25 2003

G 4310 S24 G4 S24 MAP ROOM