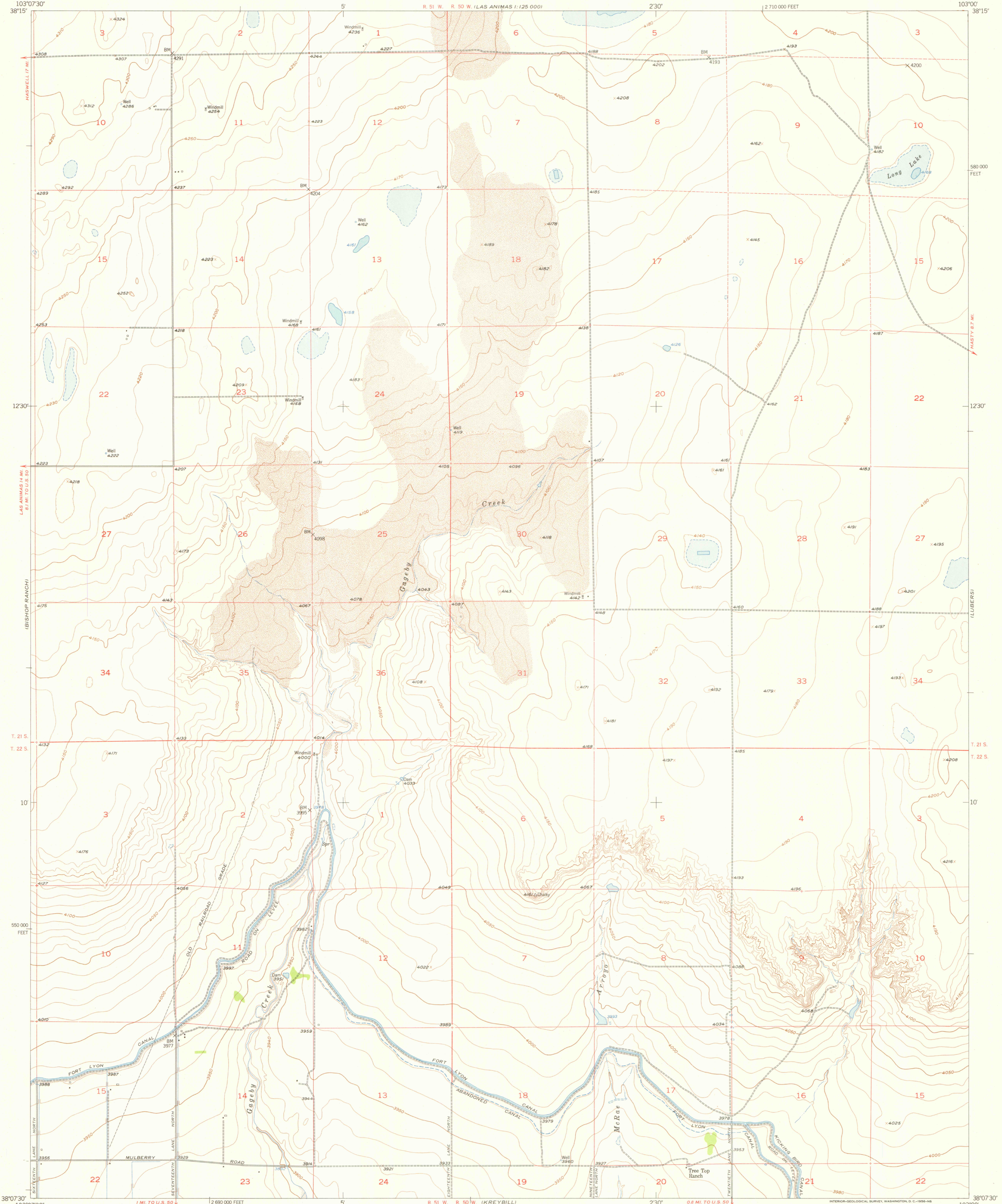


(LAS ANIMAS)  
1:125,000

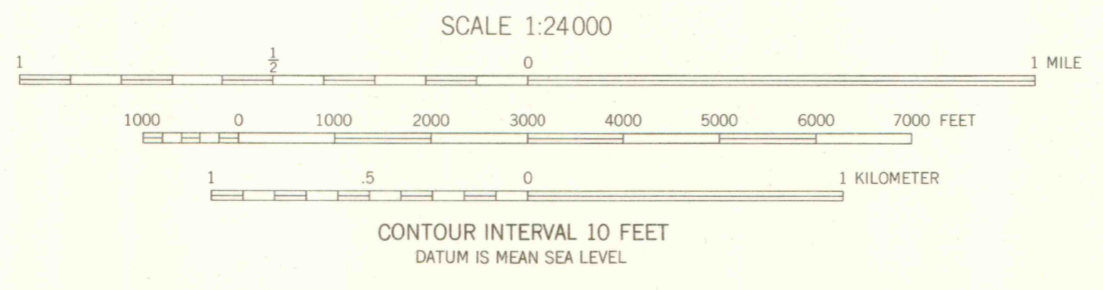
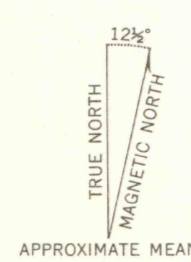
UNITED STATES  
DEPARTMENT OF THE INTERIOR  
GEOLOGICAL SURVEY

TREE TOP RANCH QUADRANGLE  
COLORADO-BENT CO.  
7.5 MINUTE SERIES (TOPOGRAPHIC)

(LAMAR)  
1:125,000



Maped, edited, and published by the Geological Survey  
Control by USGS and USC&GS  
Culture and drainage in part compiled from aerial photographs  
taken 1947. Topography by planetable surveys 1955  
Polyconic projection. 1927 North American datum  
10,000-foot grid based on Colorado coordinate system,  
south zone  
Dashed land lines indicate approximate locations  
Offsets and angles shown in T. 21 S., R. 50 W., are based on  
cultural developments and are not reflected in the original  
surveys



OFFICE COPY

ROAD CLASSIFICATION

Heavy-duty	Light-duty
Medium-duty	Unimproved dirt
U. S. Route	State Route



TREE TOP RANCH, COLO.  
N3807.5-W10300/7.5

THIS MAP COMPLIES WITH NATIONAL MAP ACCURACY STANDARDS  
FOR SALE BY U.S. GEOLOGICAL SURVEY, FEDERAL CENTER, DENVER, COLORADO OR WASHINGTON 25, D.C.  
A FOLDER DESCRIBING TOPOGRAPHIC MAPS AND SYMBOLS IS AVAILABLE ON REQUEST

1955

LIBRARY USE ONLY