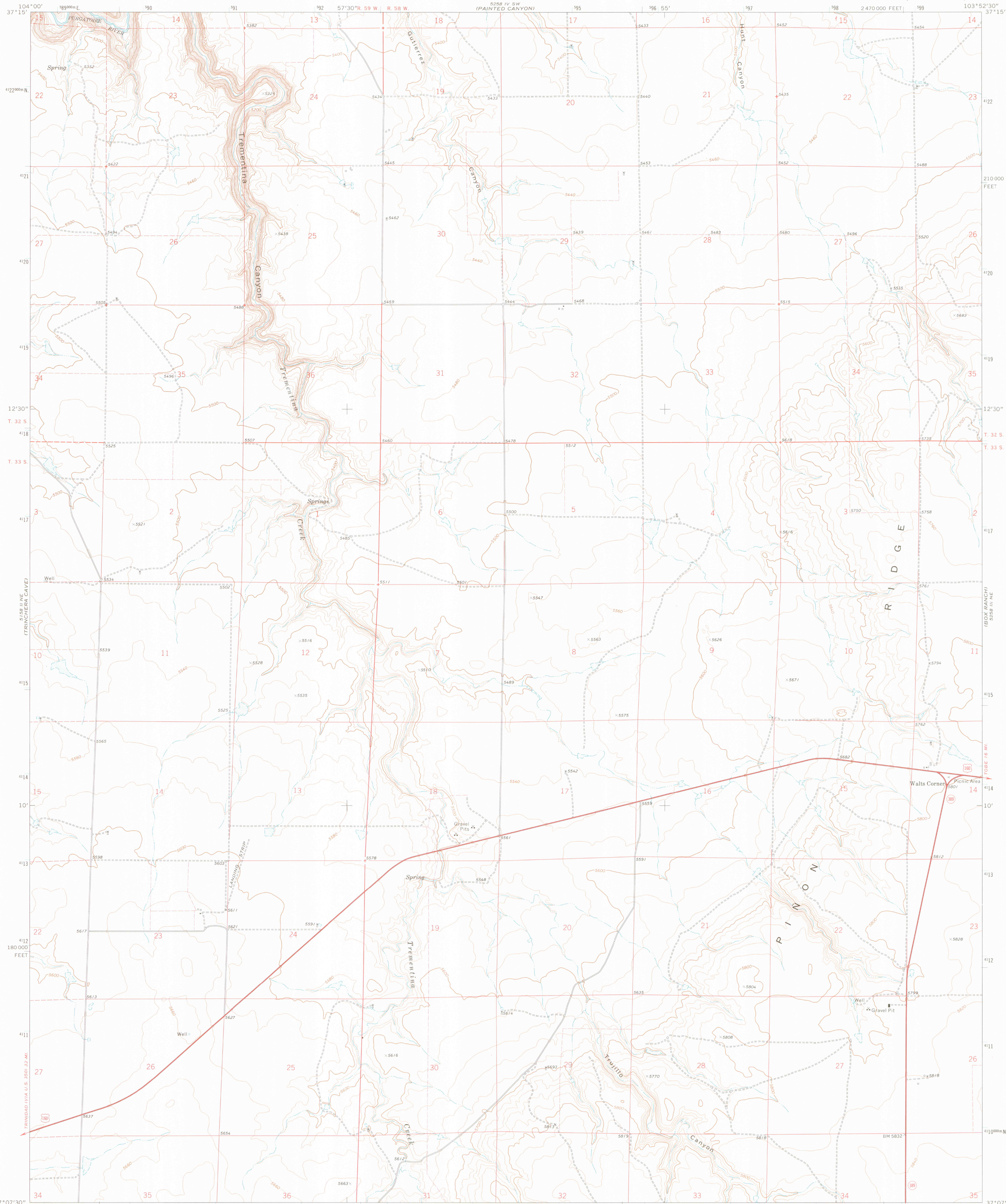


LAMBERT SPRING

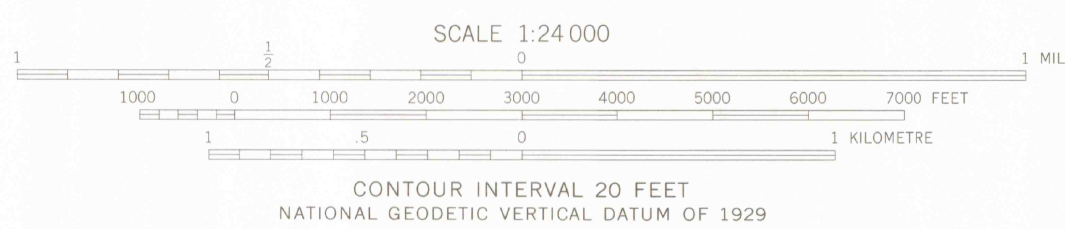
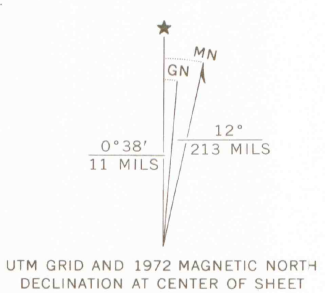
10058 CANYON SOUTH

UNITED STATES
DEPARTMENT OF THE INTERIOR
GEOLOGICAL SURVEY

TREMENTINA CANYON QUADRANGLE
COLORADO—LAS ANIMAS CO.
7.5 MINUTE SERIES (TOPOGRAPHIC)



Mapped, edited, and published by the Geological Survey
Control by USGS and NOS/NOAA
Topography by photogrammetric methods from aerial
photographs taken 1971. Field checked 1972
Projection and 10,000-foot grid ticks: Colorado
coordinate system, south zone (Lambert conformal conic)
1000-metre Universal Transverse Mercator grid ticks,
zone 13, shown in blue. 1927 North American datum
Fine red dashed lines indicate selected fence lines



ROAD CLASSIFICATION
Primary highway, hard surface
Secondary highway, hard surface
Light-duty road, hard or improved surface
Unimproved road
Interstate Route
U. S. Route
State Route

THIS MAP COMPLIES WITH NATIONAL MAP ACCURACY STANDARDS
FOR SALE BY U.S. GEOLOGICAL SURVEY, DENVER, COLORADO 80225, OR RESTON, VIRGINIA 22092
A FOLDER DESCRIBING TOPOGRAPHIC MAPS AND SYMBOLS IS AVAILABLE ON REQUEST



TREMENTINA CANYON, COLO.
N3707.5-W10352.5/7.5
LIBRARY
COLORADO SCHOOL OF MINES
GOLDEN, COLORADO
1972
AMS 5258 III NW—SERIES V877

OFFICE COPY

LIBRARY USE ONLY

G
3701
C222
S24
U5