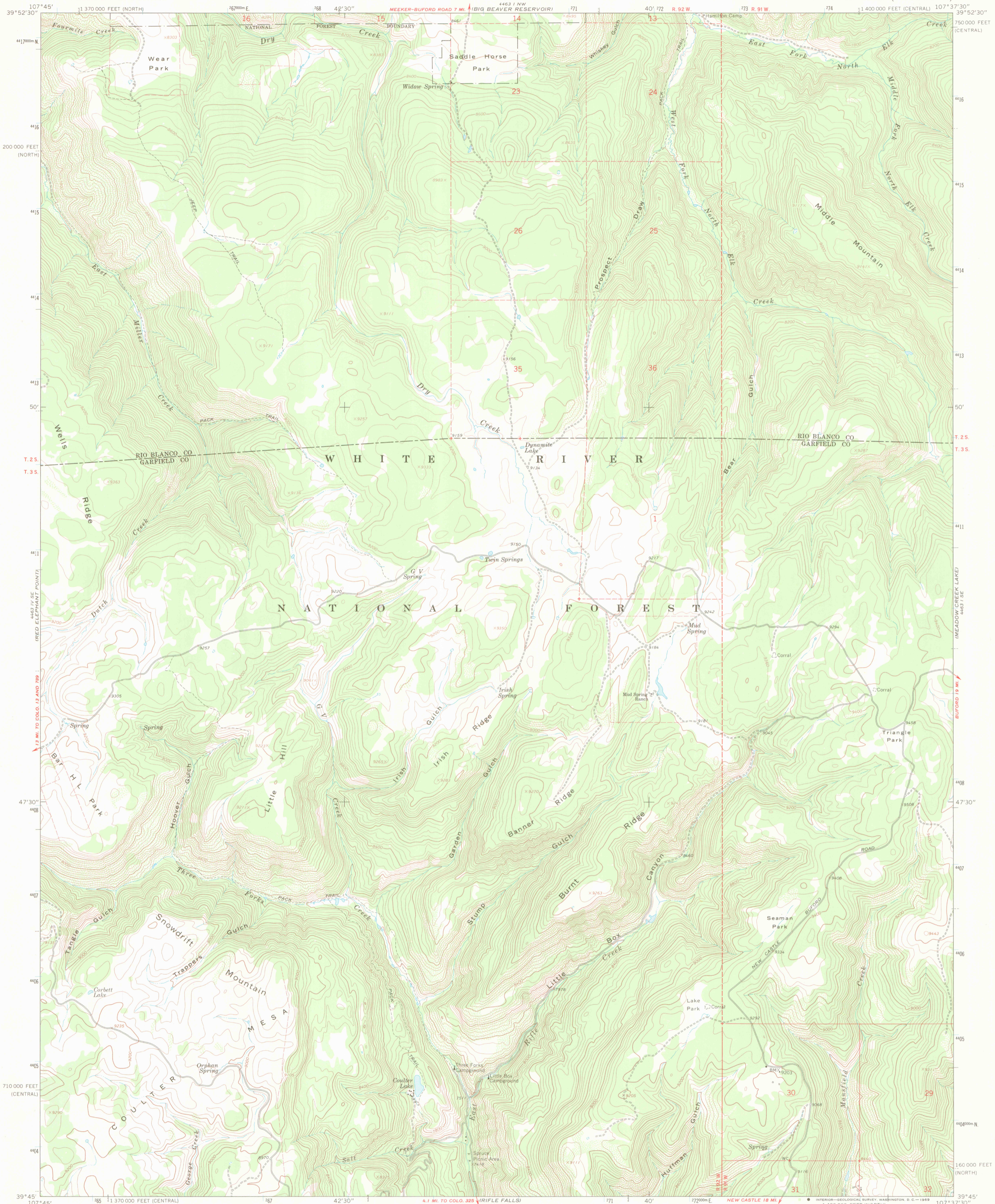
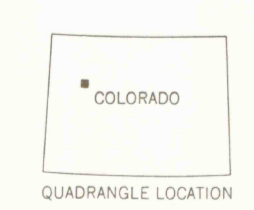
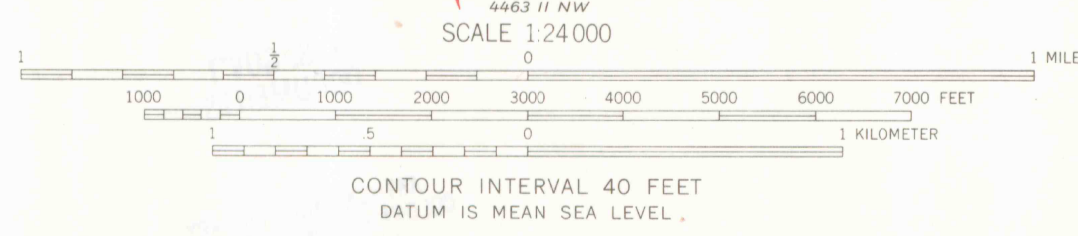
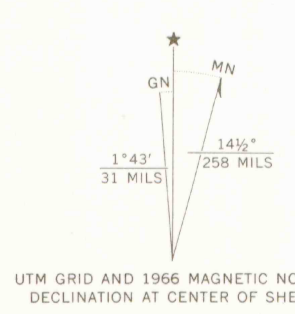


UNITED STATES
DEPARTMENT OF THE INTERIOR
GEOLOGICAL SURVEY

TRIANGLE PARK QUADRANGLE
COLORADO
7.5 MINUTE SERIES (TOPOGRAPHIC)



Mapped, edited, and published by the Geological Survey
Control by USGS and USC&GS
Topography by photogrammetric methods from aerial
photographs taken 1964-1965. Field checked 1966
Polyconic projection, 1927 North American datum
10,000-foot grids based on Colorado coordinate system,
central and north zones
1000-meter Universal Transverse Mercator grid ticks,
zone 13, shown in blue
Fine red dashed lines indicate selected fence lines
Where omitted, land lines have not been established
or are not shown because of insufficient data



ROAD CLASSIFICATION
Light-duty ——— Unimproved dirt - - - - -

TRIANGLE PARK, COLO.
N3945-W10737.5/7.5

1966
AMS 4463 1 SW—SERIES V877

THIS MAP COMPLIES WITH NATIONAL MAP ACCURACY STANDARDS
FOR SALE BY U. S. GEOLOGICAL SURVEY, DENVER, COLORADO 80225, OR WASHINGTON, D. C. 20242
A FOLDER DESCRIBING TOPOGRAPHIC MAPS AND SYMBOLS IS AVAILABLE ON REQUEST

OFFICE COPY

LIBRARY USE ONLY