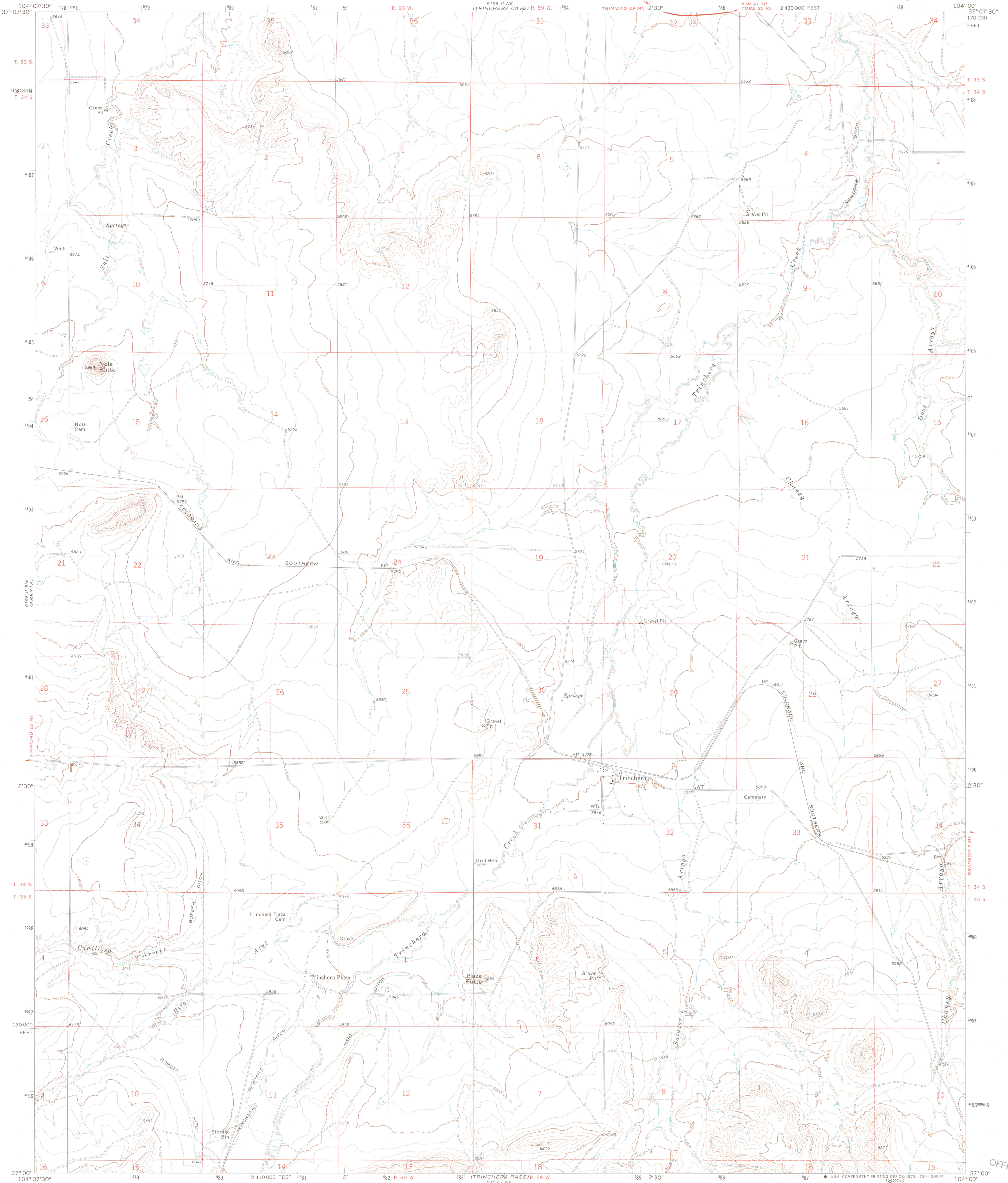


UNITED STATES  
DEPARTMENT OF THE INTERIOR  
GEOLOGICAL SURVEY

TRINCHERA QUADRANGLE  
COLORADO—LAS ANIMAS CO.  
7.5 MINUTE SERIES (TOPOGRAPHIC)



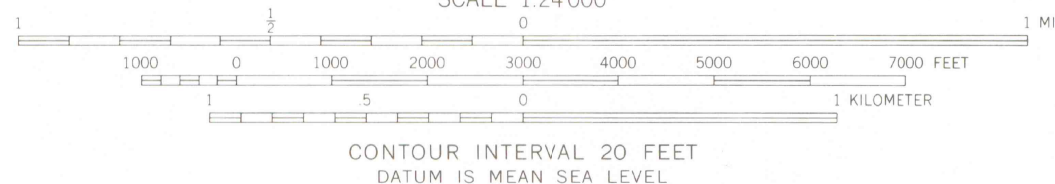
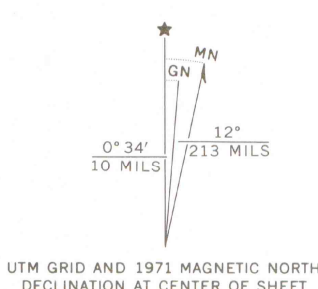
PATTERSON 11 NW CROSSING

IDALE MOUNTAIN 5157 NW

OFFICE COPY

LIBRARY USE ONLY

Mapped, edited, and published by the Geological Survey  
Control by USGS and USC&GS  
Topography by photogrammetric methods from aerial  
photographs taken 1969. Field checked 1971  
Projection and 10,000-foot grid ticks: Colorado  
coordinate system, south zone (Lambert conformal conic)  
1000-meter Universal Transverse Mercator grid ticks,  
zone 13, shown in blue. 1927 North American datum  
Fine red dashed lines indicate selected fence lines



ROAD CLASSIFICATION

Primary highway, hard surface	Light-duty road, hard or improved surface
Secondary highway, hard surface	Unimproved road
Interstate Route	U. S. Route
	State Route

THIS MAP COMPLIES WITH NATIONAL MAP ACCURACY STANDARDS  
FOR SALE BY U. S. GEOLOGICAL SURVEY, DENVER, COLORADO 80225, OR WASHINGTON, D. C. 20242  
A FOLDER DESCRIBING TOPOGRAPHIC MAPS AND SYMBOLS IS AVAILABLE ON REQUEST



LIBRARY  
COLORADO SCHOOL OF MINES  
GOLDEN, COLORADO  
1971  
AMS 5158 II SE—SERIES V877

G 3701  
C222  
S24  
U5  
C12