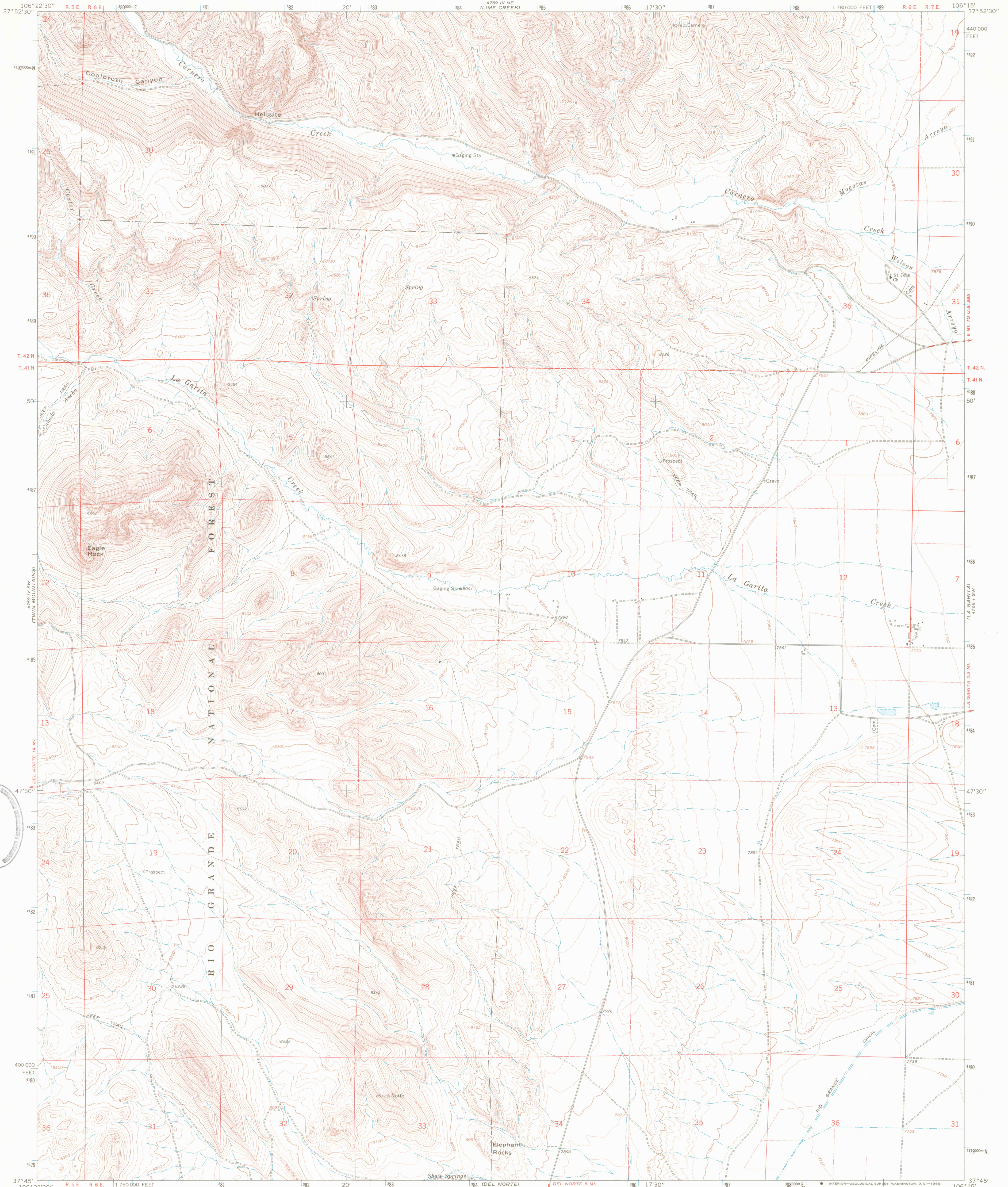
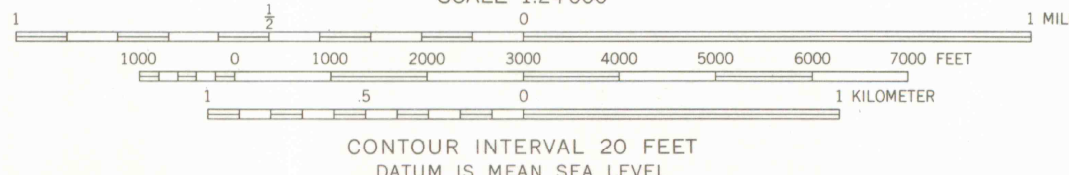
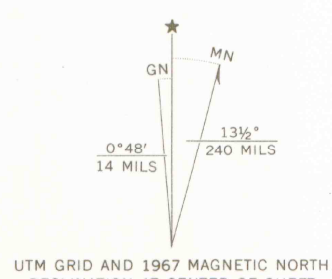


UNITED STATES
DEPARTMENT OF THE INTERIOR
GEOLOGICAL SURVEY

TWIN MOUNTAINS SE QUADRANGLE
COLORADO—SAGUACHE CO.
7.5 MINUTE SERIES (TOPOGRAPHIC)

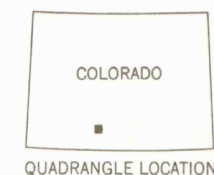


Mapped by the U. S. Forest Service
Edited and published by the Geological Survey
Control by USGS, USC&GS, and U. S. Forest Service
Topography by photogrammetric methods from aerial
photographs taken 1961. Field checked by USGS 1967
Polyconic projection. 1927 North American datum
10,000-foot grid based on Colorado coordinate system,
south zone
1000-meter Universal Transverse Mercator grid ticks,
zone 13, shown in blue
Fine red dashed lines indicate selected fence lines
Certain land lines are not shown because of insufficient data



Brenner Geological Library, Stanford University

THIS MAP COMPLIES WITH NATIONAL MAP ACCURACY STANDARDS
FOR SALE BY U. S. GEOLOGICAL SURVEY, DENVER, COLORADO 80225, OR WASHINGTON, D. C. 20242
A FOLDER DESCRIBING TOPOGRAPHIC MAPS AND SYMBOLS IS AVAILABLE ON REQUEST



ROAD CLASSIFICATION
Medium-duty ——— Light-duty ———
Unimproved dirt ———

TWIN MOUNTAINS SE, COLO.
N3745—W10615/7.5

1967

AMS 4759 IV SE—SERIES V877

OFFICE COPY
LIBRARY USE ONLY
MAR 0 6 2006
ARTHUR LAKES LIBRARY
COLORADO STATE UNIVERSITY

G 3700
s24
G4
MAP ROOM