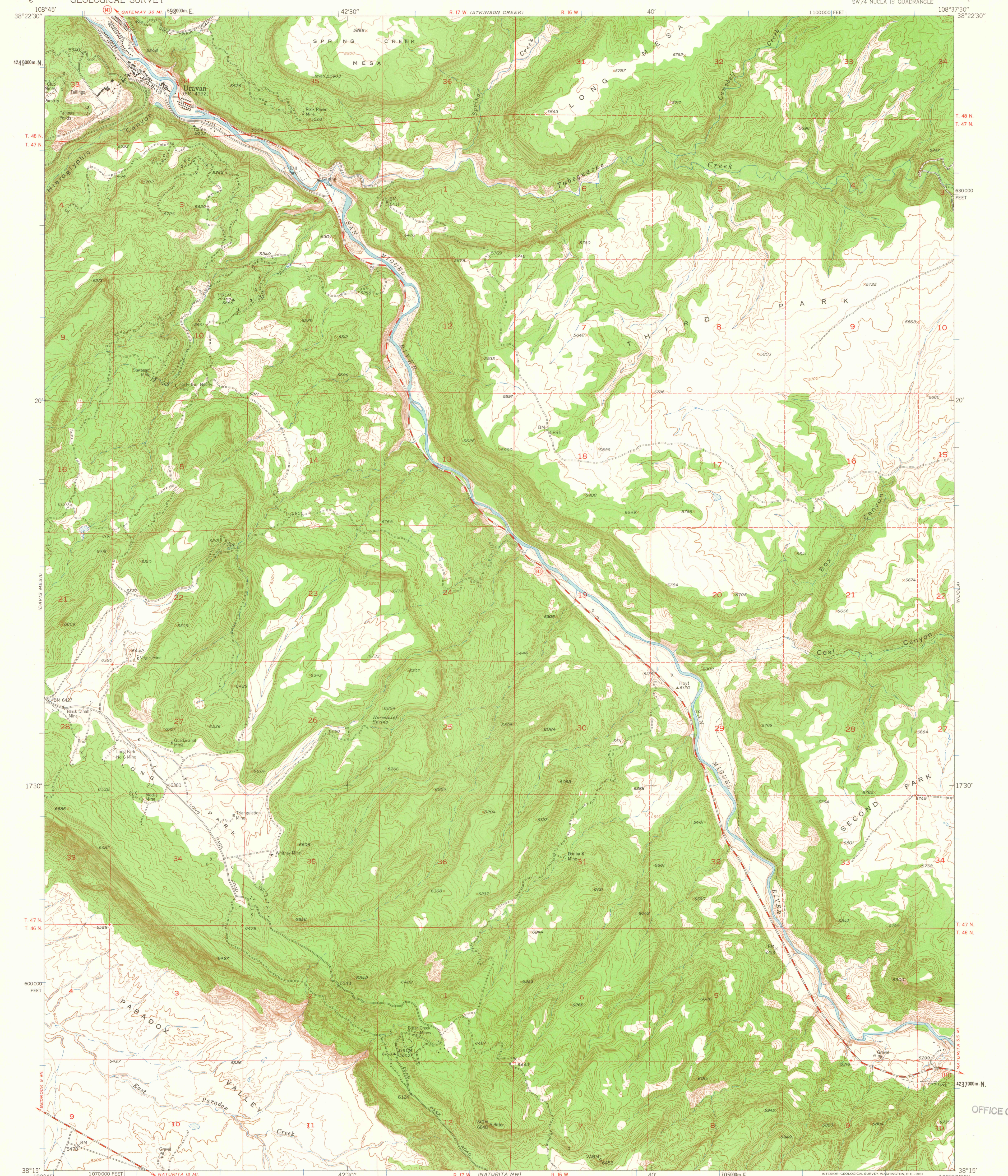
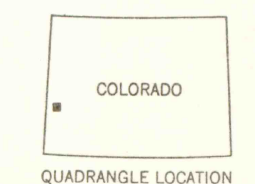
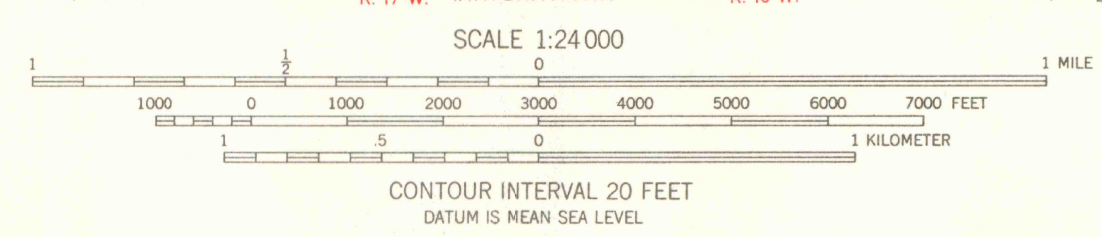
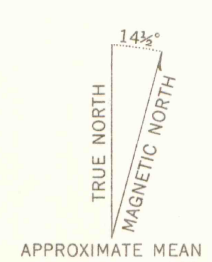


UNITED STATES
DEPARTMENT OF THE INTERIOR
GEOLOGICAL SURVEY

URAVAN QUADRANGLE
COLORADO-MONTROSE CO.
7.5 MINUTE SERIES (TOPOGRAPHIC)
SW/4 NUCLA 15 QUADRANGLE



Mapped, edited, and published by the Geological Survey
Control by USGS and USC&GS
Topography from aerial photographs by photogrammetric methods
Aerial photographs taken 1947. Field checked 1948. Revised 1960
Polyconic projection. 1927 North American datum
10,000-foot grid based on Colorado coordinate system,
south zone
1000-meter Universal Transverse Mercator grid ticks,
zone 12, shown in blue
Dashed land lines indicate approximate locations



ROAD CLASSIFICATION
Medium-duty ——— Light-duty ———
Unimproved dirt ———
State Route ○

U.S. GOVERNMENT PRINTING OFFICE
JAN 2 1962
LIBRARY OF MINES

URAVAN, COLO.
SW/4 NUCLA 15 QUADRANGLE
N3815-W10837.5/7.5

OFFICE COPY

LIBRARY USE ONLY

THIS MAP COMPLIES WITH NATIONAL MAP ACCURACY STANDARDS
FOR SALE BY U.S. GEOLOGICAL SURVEY, DENVER 25, COLORADO OR WASHINGTON 25, D.C.
A FOLDER DESCRIBING TOPOGRAPHIC MAPS AND SYMBOLS IS AVAILABLE ON REQUEST

1960