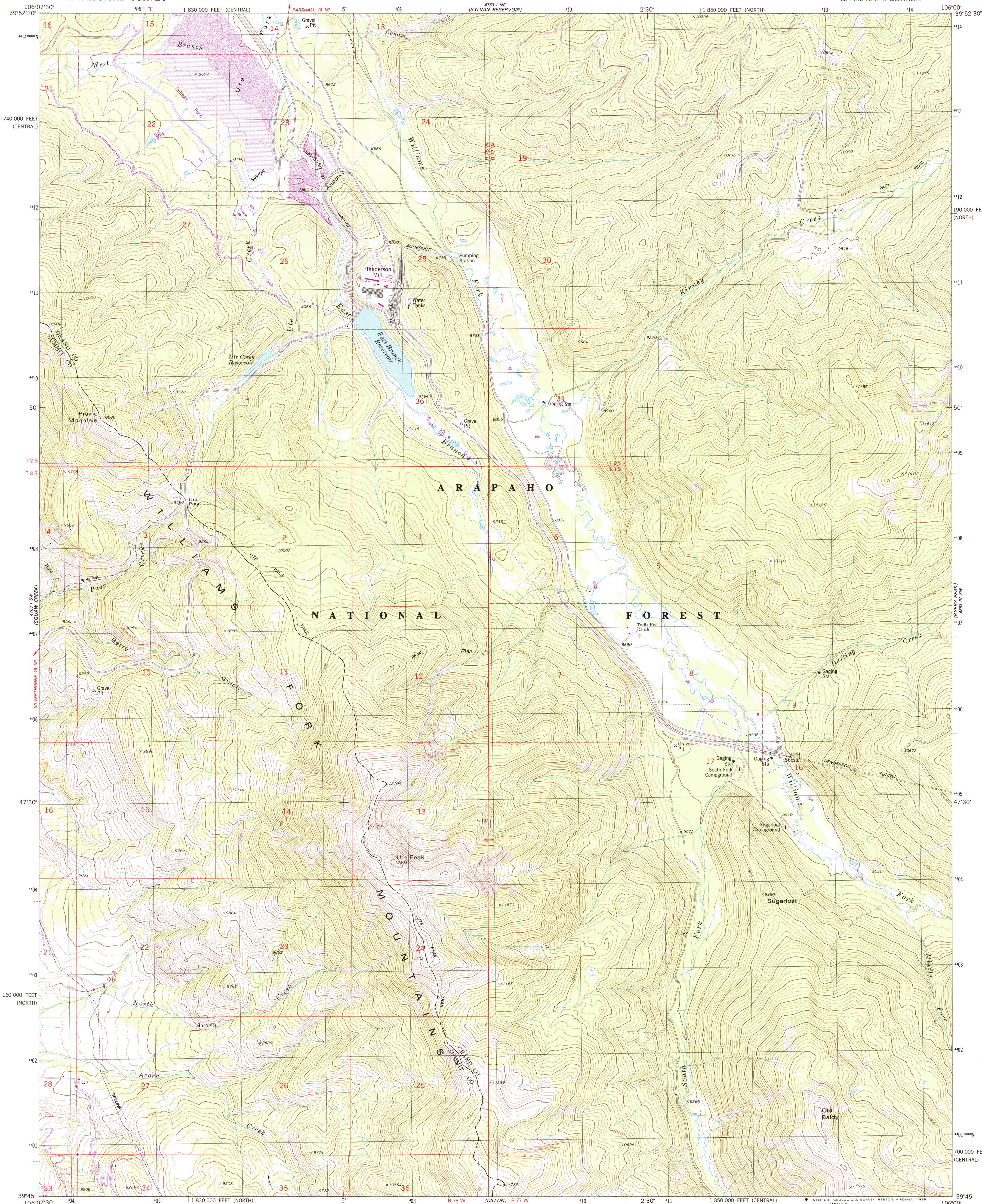


UNITED STATES  
DEPARTMENT OF THE INTERIOR  
GEOLOGICAL SURVEY

UTE PEAK QUADRANGLE  
COLORADO  
7.5 MINUTE SERIES (TOPOGRAPHIC)



Mapped, edited, and published by the Geological Survey

Control by USGS and NOS/NOAA

Topography by photogrammetric methods from aerial photographs taken 1975. Field checked 1976. Map edited 1980

Projection: Colorado coordinate system, north zone (Lambert conformal conic)

10,000-foot grid ticks based on Colorado coordinate system, north and central zones

1000-meter Universal Transverse Mercator grid, zone 13

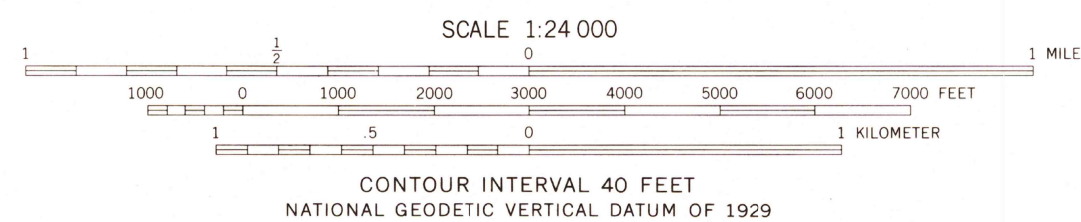
1927 North American Datum

To place on the predicted North American Datum 1983 move the projection lines 5 meters north and 50 meters east as shown by dashed corner ticks

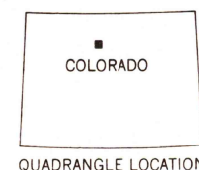
Fine red dashed lines indicate selected fence lines

Where omitted, land lines have not been established or are not shown because of insufficient data

There may be private inholdings within the boundaries of the National or State reservations shown on this map



THIS MAP COMPLIES WITH NATIONAL MAP ACCURACY STANDARDS  
FOR SALE BY U.S. GEOLOGICAL SURVEY  
DENVER, COLORADO 80225, OR RESTON, VIRGINIA 22092  
A FOLDER DESCRIBING TOPOGRAPHIC MAPS AND SYMBOLS IS AVAILABLE ON REQUEST



Revisions shown in purple and woodland compiled from aerial photographs taken 1983 and other source data. Partial field check by U. S. Forest Service. Map edited 1987

ROAD CLASSIFICATION	
Primary highway, hard surface	Light-duty road, hard or improved surface
Secondary highway, hard surface	Unimproved road
Interstate Route	U. S. Route
	State Route

UTE PEAK, COLO.  
SE4 UTE PEAK 15' QUADRANGLE  
39106-G1-TF-024

1980  
PHOTOREVISED 1987  
DMA 4763 1 SE-SERIES V877

