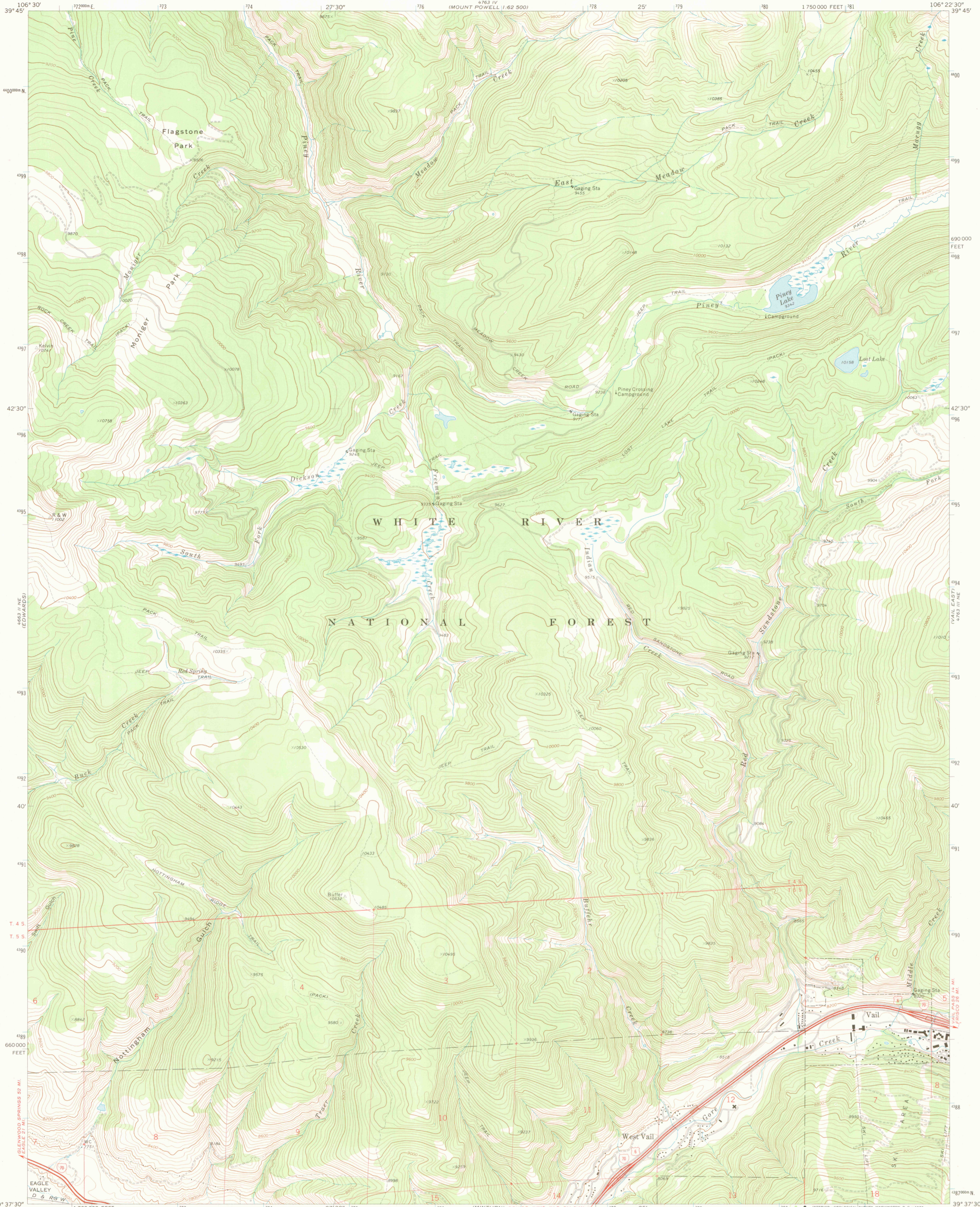
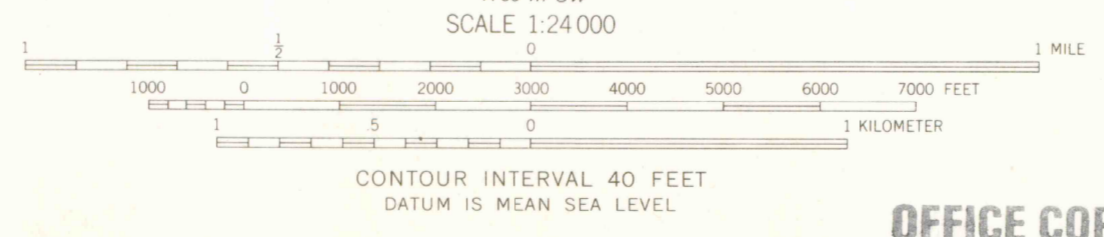
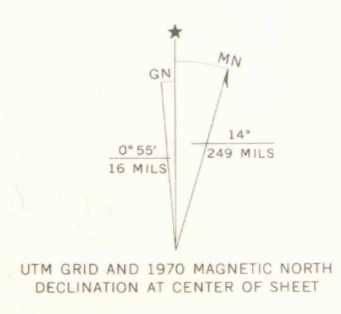


4763 IV  
MOUNT POWELL  
1,622,500



Mapped, edited, and published by the Geological Survey  
Control by USGS and USC&GS  
Topography by photogrammetric methods from aerial  
photographs taken 1969. Field checked 1970  
Polyconic projection. 1927 North American datum  
10,000-foot grid based on Colorado coordinate system,  
central zone  
1000-meter Universal Transverse Mercator grid ticks,  
zone 13, shown in blue  
Where omitted, land lines have not been established  
or are not shown because of insufficient data



OFFICE COPY  
LIBRARY USE ONLY



ROAD CLASSIFICATION

Primary highway, hard surface	Light-duty road, hard or improved surface
Secondary highway, hard surface	Unimproved road
Interstate Route	U. S. Route
	State Route

THIS MAP COMPLIES WITH NATIONAL MAP ACCURACY STANDARDS  
FOR SALE BY U. S. GEOLOGICAL SURVEY, DENVER, COLORADO 80225, OR WASHINGTON, D. C. 20242  
A FOLDER DESCRIBING TOPOGRAPHIC MAPS AND SYMBOLS IS AVAILABLE ON REQUEST

JAN 29 2006

MAP ROOM  
ARTHUR LAKES LIBRARY  
COLORADO SCHOOL MINES

VAIL WEST, COLO.  
NW/4 MINTURN 15' QUADRANGLE  
N3937.5—W10622.5/7.5

1970  
AMS 4763 III NW—SERIES Y877

G 3700  
G24  
G4  
MAP ROOM