

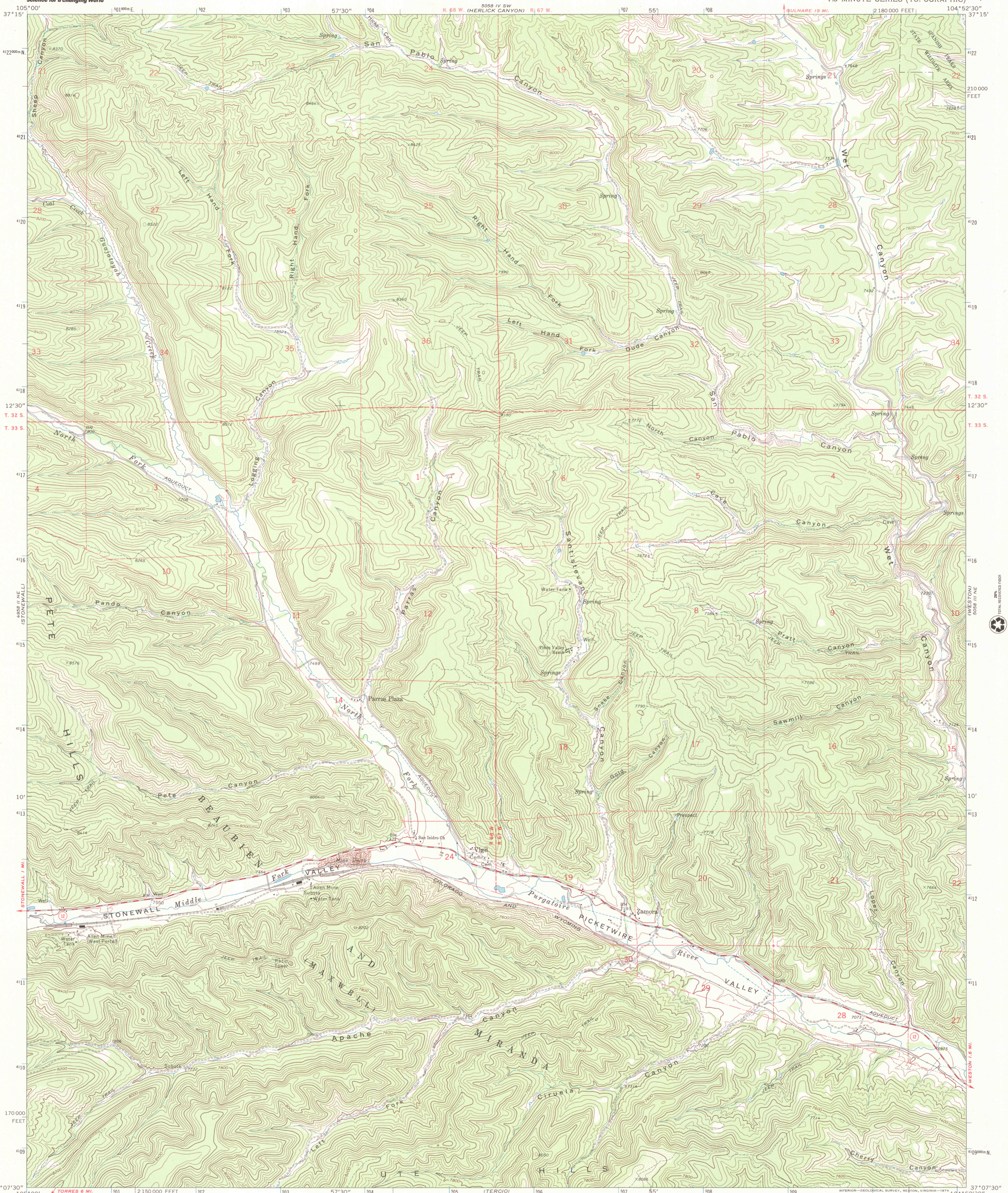
1:50000 (4 SHEETS)



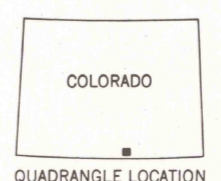
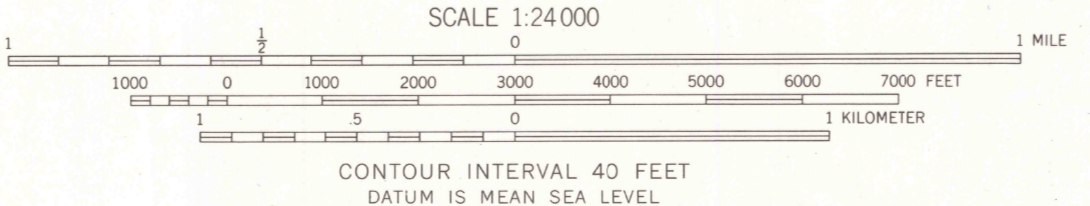
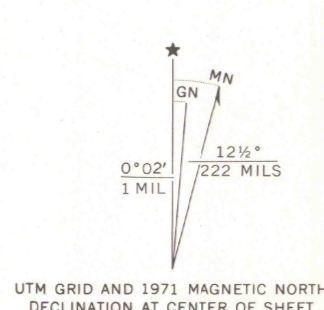
U.S. DEPARTMENT OF THE INTERIOR
U.S. GEOLOGICAL SURVEY

VIGIL QUADRANGLE
COLORADO-LAS ANIMAS CO.
7.5 MINUTE SERIES (TOPOGRAPHIC)

1:50000 (4 SHEETS)



Mapped, edited, and published by the Geological Survey
Control by USGS and USC&GS
Topography by photogrammetric methods from aerial photographs taken 1970. Field checked 1971
Projection and 10,000-foot grid ticks: Colorado coordinate system, south zone (Lambert conformal conic) 1000-meter Universal Transverse Mercator grid ticks, zone 13, shown in blue. 1927 North American datum



ROAD CLASSIFICATION

Primary highway, hard surface	Light-duty road, hard or improved surface
Secondary highway, hard surface	Unimproved road
Interstate Route	U. S. Route
	State Route

RECEIVED
MAR 31 2001

VIGIL, COLO.
N3707.5-W10452.5/7.5
1971

THIS MAP COMPLIES WITH NATIONAL MAP ACCURACY STANDARDS
FOR SALE BY U.S. GEOLOGICAL SURVEY, P.O. BOX 25286, DENVER, COLORADO 80225
A FOLDER DESCRIBING TOPOGRAPHIC MAPS AND SYMBOLS IS AVAILABLE ON REQUEST

HISTORICAL MAP ARCHIVES

AMS 5058 III NW-SERIES V877

