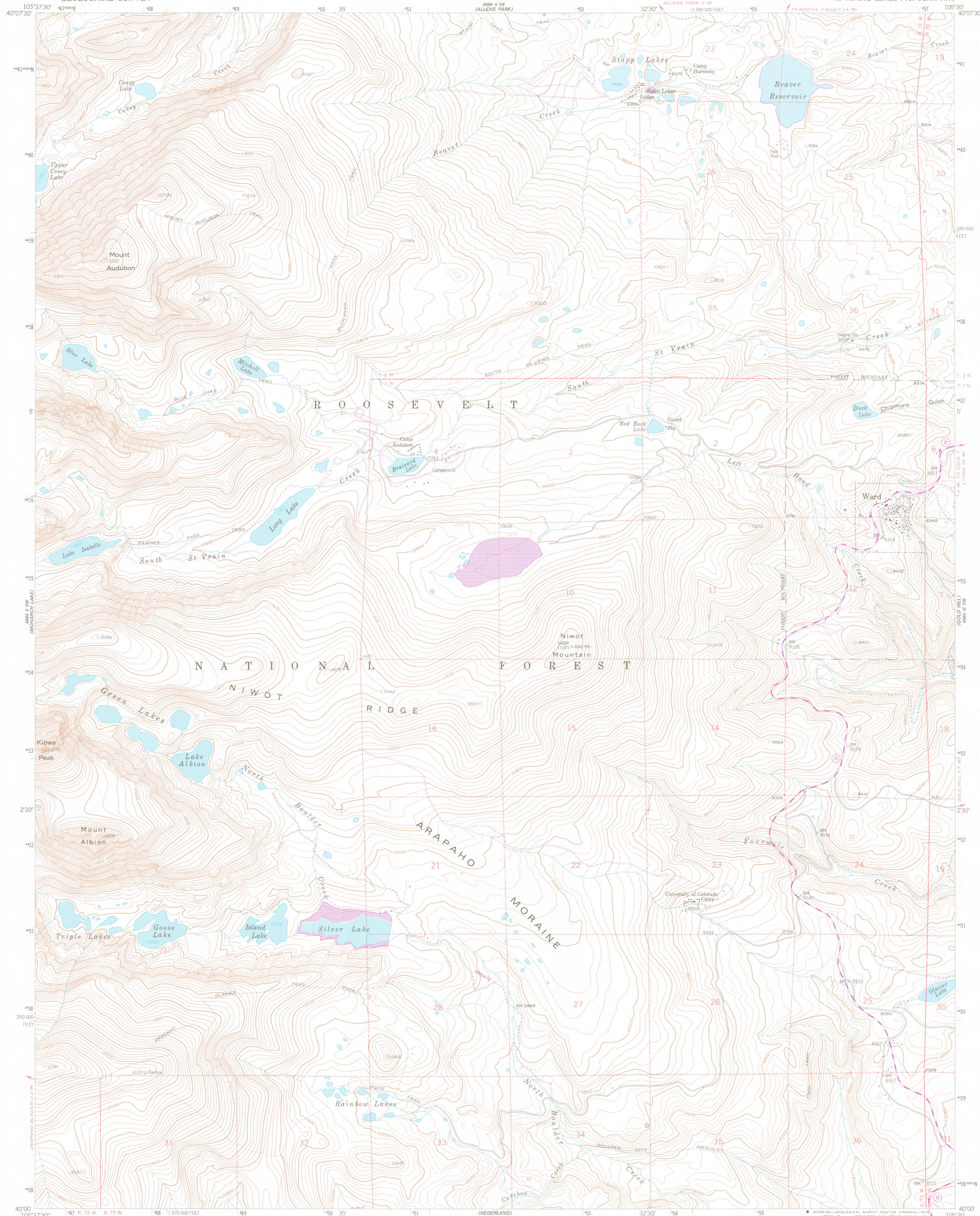
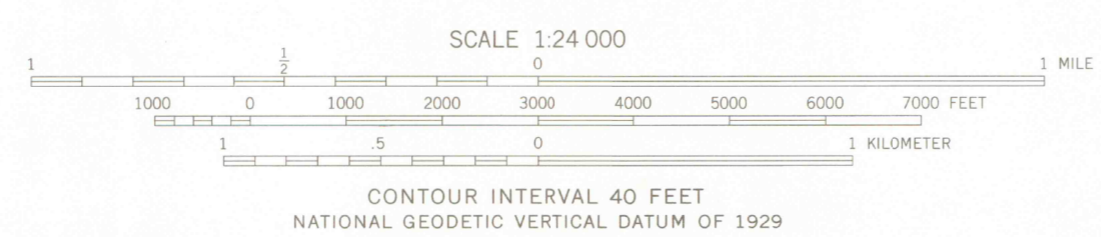
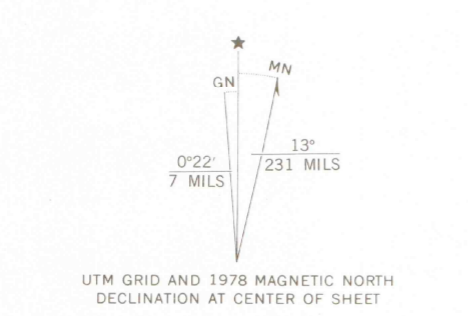


copy 2  
GEOLOGY



Maped, edited, and published by the Geological Survey as part of the Department of the Interior program for the development of the Missouri River Basin  
Control by USGS and NOS/NOAA  
Topography from aerial photographs by photogrammetric methods  
Aerial photographs taken 1953. Field check 1957  
Polyconic projection. 1927 North American datum  
10,000-foot grid based on Colorado coordinate system, north zone  
1000-meter Universal Transverse Mercator grid ticks, zone 13, shown in blue  
Dashed land lines indicate approximate locations  
Land lines omitted in Ts. 1 and 2 N., R. 74 W., and in parts of Ts. 1 and 2 N., R. 73 W., because of insufficient data  
Unchecked elevations are shown in brown



ROAD CLASSIFICATION

Primary highway, hard surface	Light-duty road, hard or improved surface
Secondary highway, hard surface	Unimproved road
Interstate Route	U. S. Route
	State Route



THIS MAP COMPLIES WITH NATIONAL MAP ACCURACY STANDARDS  
FOR SALE BY U. S. GEOLOGICAL SURVEY, DENVER, COLORADO 80225, OR RESTON, VIRGINIA 22092  
A FOLDER DESCRIBING TOPOGRAPHIC MAPS AND SYMBOLS IS AVAILABLE ON REQUEST

**WITHDRAWN**

TOPO CO 24000  
WARD, COLO  
N4000-115030/7.5  
1957  
PHOTOREVISED 1970  
AMS 4864 II SE-SERIES 19877

APR 27 2004  
ARTHUR L. LARSEN LIBRARY  
COLORADO SCHOOL OF MINES

copy 2  
GEOLOGICAL SURVEY OF WYOMING  
G 3700  
s24  
G4  
MAP ROOM