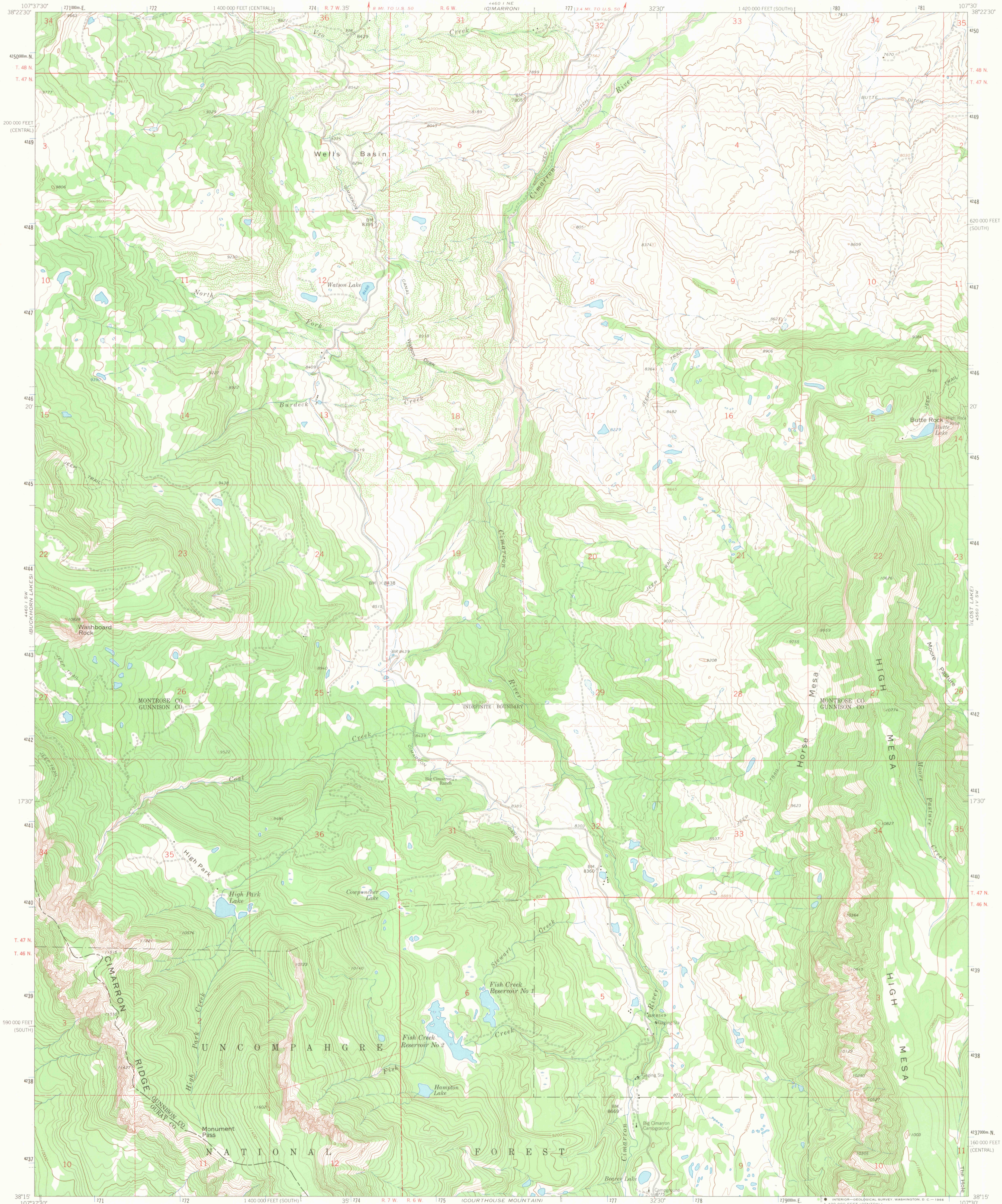


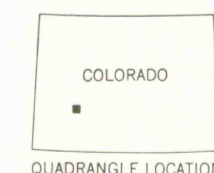
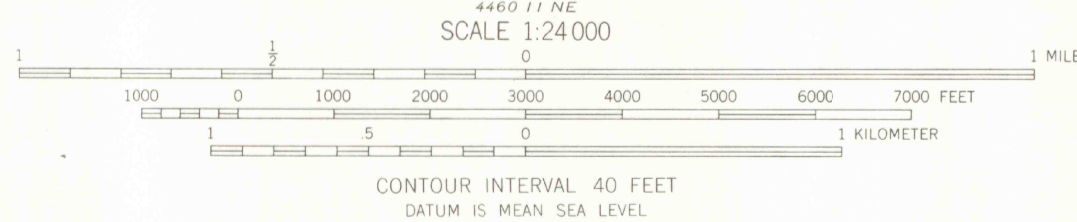
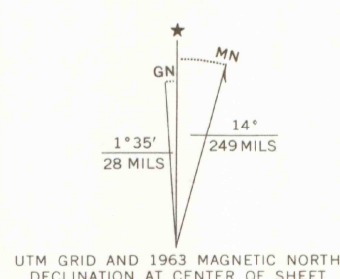
UNITED STATES
DEPARTMENT OF THE INTERIOR
GEOLOGICAL SURVEY

WASHBOARD ROCK QUADRANGLE
COLORADO
7.5 MINUTE SERIES (TOPOGRAPHIC)



Mapped, edited, and published by the Geological Survey

Control by USGS and USC&GS
Topography by photogrammetric methods from aerial photographs taken 1962. Field checked 1963
Polyconic projection. 1927 North American datum
10 000-foot grids based on Colorado coordinate system, south and central zones
1000-meter Universal Transverse Mercator grid ticks, zone 13, shown in blue
Fine red dashed lines indicate selected fence lines
Where omitted, land line has not been established



ROAD CLASSIFICATION
Light-duty ——— Unimproved dirt - - - - -

THIS MAP COMPLIES WITH NATIONAL MAP ACCURACY STANDARDS
FOR SALE BY U. S. GEOLOGICAL SURVEY, DENVER, COLORADO 80225, OR WASHINGTON, D. C. 20242
A FOLDER DESCRIBING TOPOGRAPHIC MAPS AND SYMBOLS IS AVAILABLE ON REQUEST

WASHBOARD ROCK, COLO.
N3815-W10730/7.5

1963

AMS 4460 I SE - SERIES V877

OFFICE COPY

ISHEEP MOUNTAIN
4560 17 NW