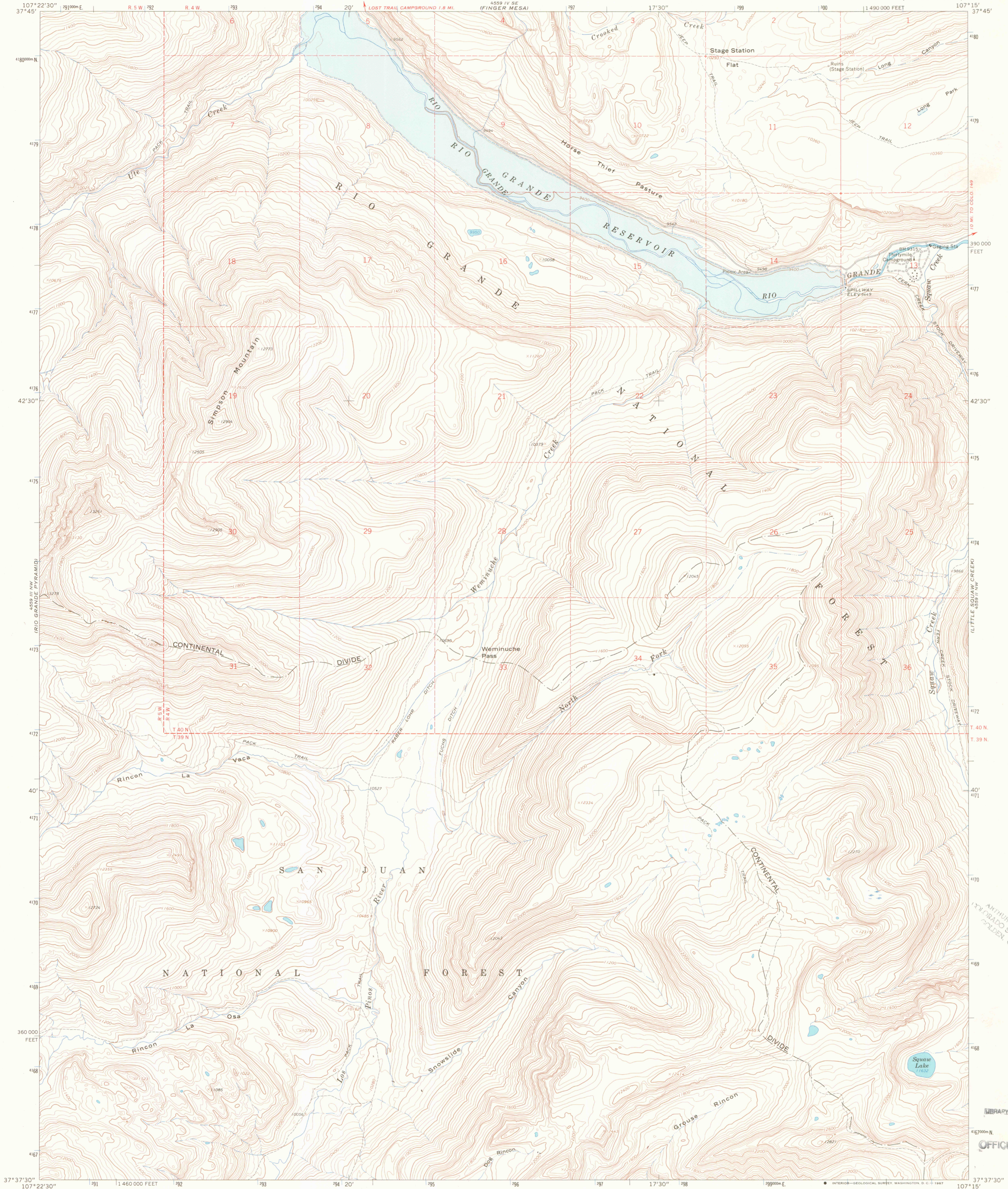


549 1:50,000  
(PINE CREEK  
MOUNTAIN)

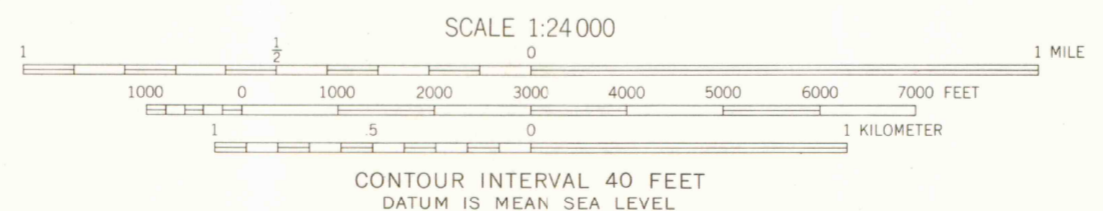
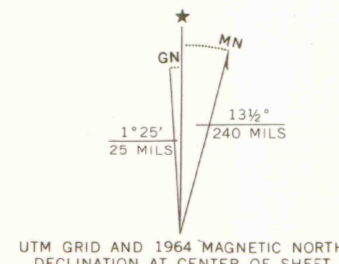
UNITED STATES  
DEPARTMENT OF THE INTERIOR  
GEOLOGICAL SURVEY

WEMINUCHE PASS QUADRANGLE  
COLORADO—HINSDALE CO.  
7.5 MINUTE SERIES (TOPOGRAPHIC)

549 1:50,000  
(BRISTOL  
HEAD)



Mapped, edited, and published by the Geological Survey  
Control by USGS and USC&GS  
Topography by photogrammetric methods from aerial  
photographs taken 1963. Field checked 1964  
Polyconic projection. 1927 North American datum  
10,000-foot grid based on Colorado coordinate system, south zone  
1000-meter Universal Transverse Mercator grid ticks,  
zone 13, shown in blue  
Where omitted, land lines have not been established



ROAD CLASSIFICATION

Light-duty	Unimproved dirt
------------	-----------------



WEMINUCHE PASS, COLO.  
N3737.5—W10715/7.5

THIS MAP COMPLIES WITH NATIONAL MAP ACCURACY STANDARDS  
FOR SALE BY U.S. GEOLOGICAL SURVEY, DENVER, COLORADO 80225, OR WASHINGTON, D. C. 20242  
A FOLDER DESCRIBING TOPOGRAPHIC MAPS AND SYMBOLS IS AVAILABLE ON REQUEST



1964  
AMS 4559 III NE—SERIES V877

ARTHUR LAKES LIBRARY  
1371 FORADO SCHOOL OF MINES  
GOLDEN, COLORADO

LIBRARY USE ONLY  
OFFICE COPY

G 3701  
C222  
S24  
U5

OFFICE COPY