

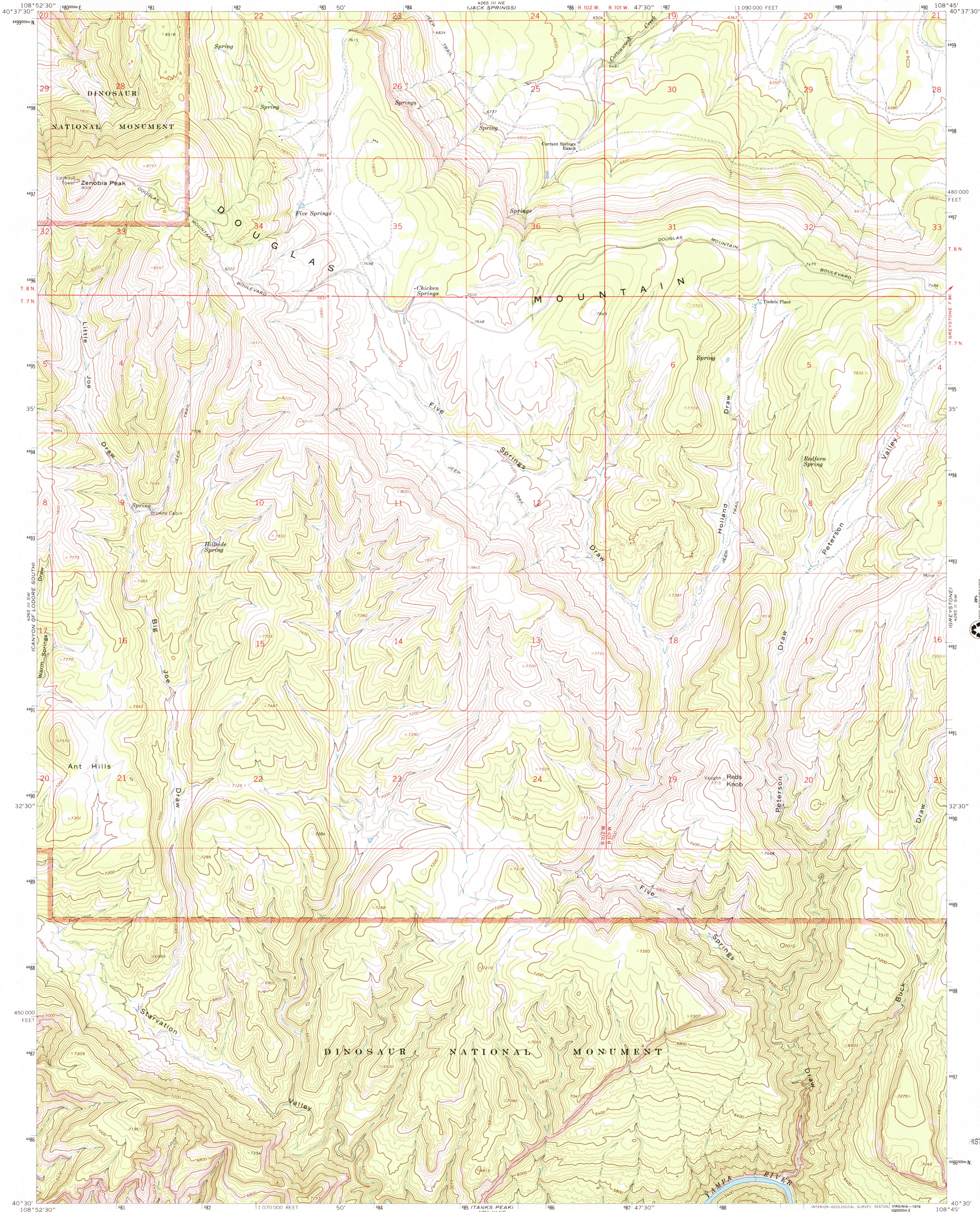
40° 37' 30" N  
108° 52' 30" W



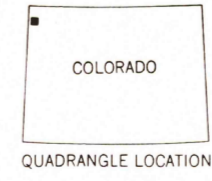
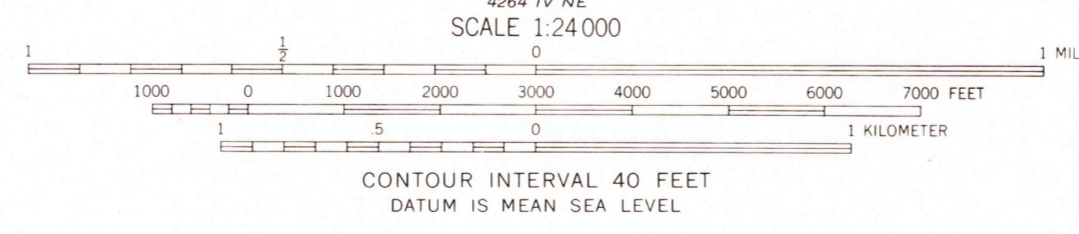
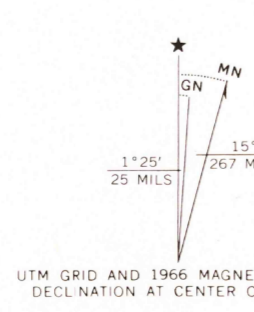
U.S. DEPARTMENT OF THE INTERIOR  
U.S. GEOLOGICAL SURVEY

ZENOBIA PEAK QUADRANGLE  
COLORADO—MOFFAT CO.  
7.5 MINUTE SERIES (TOPOGRAPHIC)

40° 45' N  
108° 45' W



Mapped, edited, and published by the Geological Survey  
Control by USGS and USC&S  
Topography by photogrammetric methods from aerial  
photographs taken 1965. Field checked 1966.  
Polyconic projection. 1927 North American datum  
10,000-foot grid based on Colorado coordinate system,  
north zone  
1000-meter Universal Transverse Mercator grid ticks,  
zone 12, shown in blue  
Where omitted, land lines have not been established



ROAD CLASSIFICATION  
Light duty ——— Unimproved dirt ———

THIS MAP COMPLIES WITH NATIONAL MAP ACCURACY STANDARDS  
FOR SALE BY U.S. GEOLOGICAL SURVEY, P.O. BOX 25286, DENVER, COLORADO 80225  
A FOLDER DESCRIBING TOPOGRAPHIC MAPS AND SYMBOLS IS AVAILABLE ON REQUEST

ZENOBIA PEAK, COLO.  
N4030—W10845/7.5

1966

AMS 4265 III SE—SERIES V877

RECEIVED  
MAR 31 2001

HISTORICAL MAP ARCHIVES

