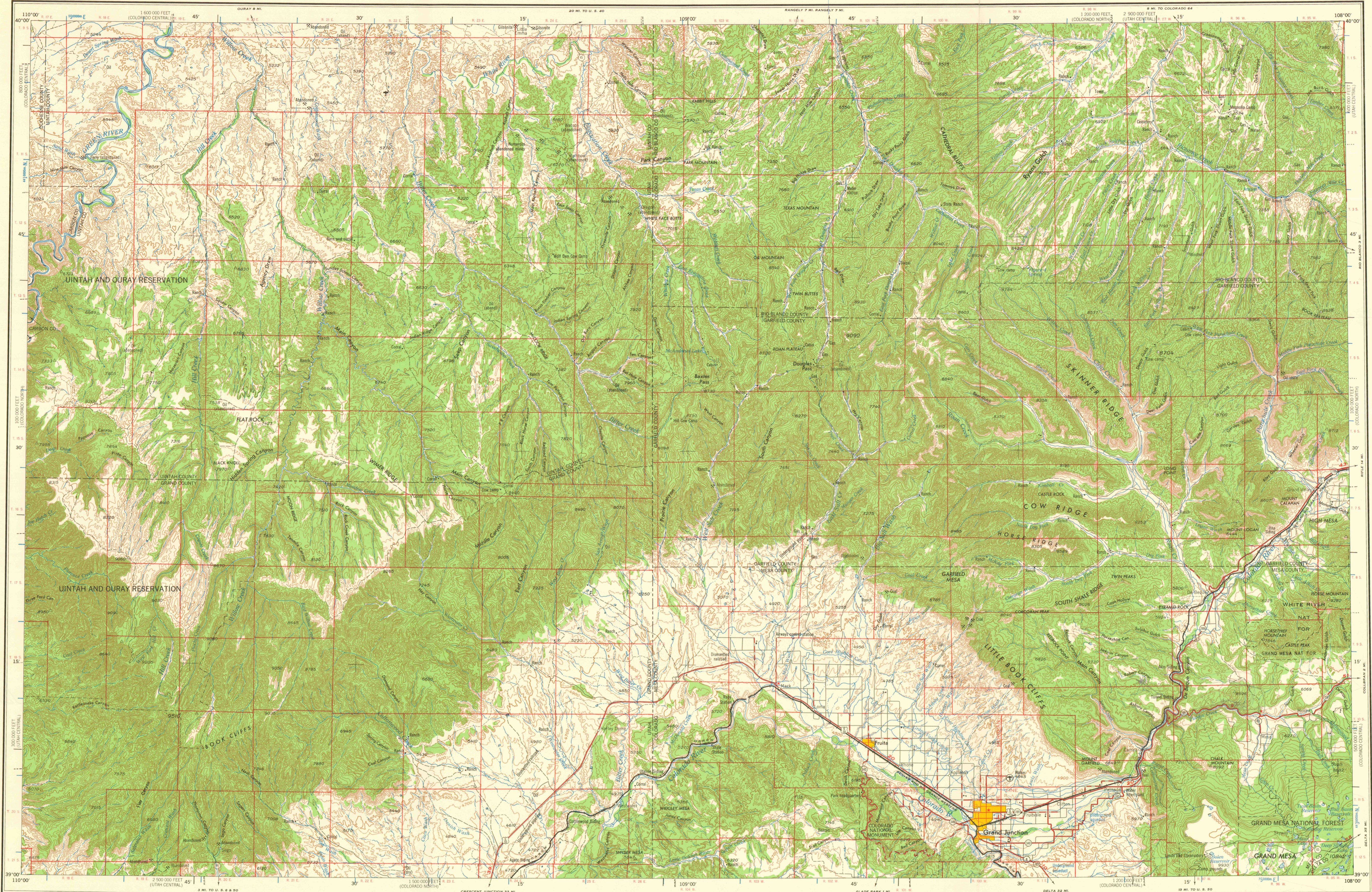


250,000 GRAND JUNC.



Prepared by the Army Map Service (AGS), Corps of Engineers, U. S. Army, Washington, D. C. Compiled in 1957 by photogrammetric methods and from: United States Quadrangles, 1:24,000, 1:25,000 and 1:62,500; USGS and AMS, 1952-1953; Planimetric detail revised by photogrammetric methods. Horizontal and vertical control by USCGS, USGS and CE. Photography field annotated 1956.

100,000-foot grid based on Utah coordinate system, central and north zones, and Colorado coordinate system, central zone.

10,000-meter Universal Transverse Mercator grid ticks, zone 12 shown in blue.

**LEGEND**

**ROAD DATA 1956**  
Figures in red denote approximate distances in miles between stars

**POPULATED PLACES**

Over 500,000	<b>LOS ANGELES</b>
100,000 to 500,000	<b>OMAHA</b>
25,000 to 100,000	<b>GALVESTON</b>
5,000 to 25,000	<b>Laramie</b>
1,000 to 5,000	<b>Grand Coulee</b>
Less than 1,000	<b>Sun Valley</b>

**RAILROADS**

- Single track
- Double or Multiple
- Standard gauge
- Narrow gauge
- International

**BOUNDARIES**

- State
- County
- Park or reservation

**LANDMARKS**: School, Church, Other

**Other Symbols**: Horizontal control point, Spot elevation in feet, Marsh or swamp, Seaplane airport, Orchard, Woods brushwood, Power line, Landplane airport, Landing area, Interim or dry stream

Scale 1:250,000

0 5 10 15 20 Statute Miles

0 5 10 15 20 25 30 Kilometers

0 5 10 15 20 Nautical Miles

**CONTOUR INTERVAL 200 FEET**  
**WITH SUPPLEMENTARY CONTOURS AT 100 FOOT INTERVALS**  
**TRANSVERSE MERCATOR PROJECTION**

1955 MAGNETIC DECLINATION FOR THIS SHEET VARIES FROM 15° 45' EASTERLY FOR THE CENTER OF THE WEST EDGE TO 14° 45' EASTERLY FOR THE CENTER OF THE EAST EDGE. MEAN ANNUAL CHANGE 19 0' WESTERLY.

FOR SALE BY U.S. GEOLOGICAL SURVEY, DENVER 25, COLORADO OR WASHINGTON 25, D. C.

**LOCATION DIAGRAM FOR NJ 12-3**

NEBRASKA	NK 128	NK 129	NK 130	NK 131
WYOMING	NK 127	NK 128	NK 129	NK 130
COLORADO	NK 126	NK 127	NK 128	NK 129
UTAH	NK 125	NK 126	NK 127	NK 128
ARIZONA	NK 124	NK 125	NK 126	NK 127
NEW MEXICO	NK 123	NK 124	NK 125	NK 126
TEXAS	NK 122	NK 123	NK 124	NK 125
OKLAHOMA	NK 121	NK 122	NK 123	NK 124
KANSAS	NK 120	NK 121	NK 122	NK 123
MISSOURI	NK 119	NK 120	NK 121	NK 122
ILLINOIS	NK 118	NK 119	NK 120	NK 121
INDIANA	NK 117	NK 118	NK 119	NK 120
MICHIGAN	NK 116	NK 117	NK 118	NK 119
OHIO	NK 115	NK 116	NK 117	NK 118
PENNSYLVANIA	NK 114	NK 115	NK 116	NK 117
MARYLAND	NK 113	NK 114	NK 115	NK 116
DELAWARE	NK 112	NK 113	NK 114	NK 115
VIRGINIA	NK 111	NK 112	NK 113	NK 114
NORTH CAROLINA	NK 110	NK 111	NK 112	NK 113
SOUTH CAROLINA	NK 109	NK 110	NK 111	NK 112
GEORGIA	NK 108	NK 109	NK 110	NK 111
FLORIDA	NK 107	NK 108	NK 109	NK 110
ALABAMA	NK 106	NK 107	NK 108	NK 109
MISSISSIPPI	NK 105	NK 106	NK 107	NK 108
LOUISIANA	NK 104	NK 105	NK 106	NK 107
ARKANSAS	NK 103	NK 104	NK 105	NK 106
KENTUCKY	NK 102	NK 103	NK 104	NK 105
TENNESSEE	NK 101	NK 102	NK 103	NK 104
MICHIGAN	NK 100	NK 101	NK 102	NK 103
OHIO	NK 99	NK 100	NK 101	NK 102
PENNSYLVANIA	NK 98	NK 99	NK 100	NK 101
MARYLAND	NK 97	NK 98	NK 99	NK 100
DELAWARE	NK 96	NK 97	NK 98	NK 99
VIRGINIA	NK 95	NK 96	NK 97	NK 98
NORTH CAROLINA	NK 94	NK 95	NK 96	NK 97
SOUTH CAROLINA	NK 93	NK 94	NK 95	NK 96
GEORGIA	NK 92	NK 93	NK 94	NK 95
FLORIDA	NK 91	NK 92	NK 93	NK 94
ALABAMA	NK 90	NK 91	NK 92	NK 93
MISSISSIPPI	NK 89	NK 90	NK 91	NK 92
LOUISIANA	NK 88	NK 89	NK 90	NK 91
ARKANSAS	NK 87	NK 88	NK 89	NK 90
KENTUCKY	NK 86	NK 87	NK 88	NK 89
TENNESSEE	NK 85	NK 86	NK 87	NK 88
MICHIGAN	NK 84	NK 85	NK 86	NK 87
OHIO	NK 83	NK 84	NK 85	NK 86
PENNSYLVANIA	NK 82	NK 83	NK 84	NK 85
MARYLAND	NK 81	NK 82	NK 83	NK 84
DELAWARE	NK 80	NK 81	NK 82	NK 83
VIRGINIA	NK 79	NK 80	NK 81	NK 82
NORTH CAROLINA	NK 78	NK 79	NK 80	NK 81
SOUTH CAROLINA	NK 77	NK 78	NK 79	NK 80
GEORGIA	NK 76	NK 77	NK 78	NK 79
FLORIDA	NK 75	NK 76	NK 77	NK 78
ALABAMA	NK 74	NK 75	NK 76	NK 77
MISSISSIPPI	NK 73	NK 74	NK 75	NK 76
LOUISIANA	NK 72	NK 73	NK 74	NK 75
ARKANSAS	NK 71	NK 72	NK 73	NK 74
KENTUCKY	NK 70	NK 71	NK 72	NK 73
TENNESSEE	NK 69	NK 70	NK 71	NK 72
MICHIGAN	NK 68	NK 69	NK 70	NK 71
OHIO	NK 67	NK 68	NK 69	NK 70
PENNSYLVANIA	NK 66	NK 67	NK 68	NK 69
MARYLAND	NK 65	NK 66	NK 67	NK 68
DELAWARE	NK 64	NK 65	NK 66	NK 67
VIRGINIA	NK 63	NK 64	NK 65	NK 66
NORTH CAROLINA	NK 62	NK 63	NK 64	NK 65
SOUTH CAROLINA	NK 61	NK 62	NK 63	NK 64
GEORGIA	NK 60	NK 61	NK 62	NK 63
FLORIDA	NK 59	NK 60	NK 61	NK 62
ALABAMA	NK 58	NK 59	NK 60	NK 61
MISSISSIPPI	NK 57	NK 58	NK 59	NK 60
LOUISIANA	NK 56	NK 57	NK 58	NK 59
ARKANSAS	NK 55	NK 56	NK 57	NK 58
KENTUCKY	NK 54	NK 55	NK 56	NK 57
TENNESSEE	NK 53	NK 54	NK 55	NK 56
MICHIGAN	NK 52	NK 53	NK 54	NK 55
OHIO	NK 51	NK 52	NK 53	NK 54
PENNSYLVANIA	NK 50	NK 51	NK 52	NK 53
MARYLAND	NK 49	NK 50	NK 51	NK 52
DELAWARE	NK 48	NK 49	NK 50	NK 51
VIRGINIA	NK 47	NK 48	NK 49	NK 50
NORTH CAROLINA	NK 46	NK 47	NK 48	NK 49
SOUTH CAROLINA	NK 45	NK 46	NK 47	NK 48
GEORGIA	NK 44	NK 45	NK 46	NK 47
FLORIDA	NK 43	NK 44	NK 45	NK 46
ALABAMA	NK 42	NK 43	NK 44	NK 45
MISSISSIPPI	NK 41	NK 42	NK 43	NK 44
LOUISIANA	NK 40	NK 41	NK 42	NK 43
ARKANSAS	NK 39	NK 40	NK 41	NK 42
KENTUCKY	NK 38	NK 39	NK 40	NK 41
TENNESSEE	NK 37	NK 38	NK 39	NK 40
MICHIGAN	NK 36	NK 37	NK 38	NK 39
OHIO	NK 35	NK 36	NK 37	NK 38
PENNSYLVANIA	NK 34	NK 35	NK 36	NK 37
MARYLAND	NK 33	NK 34	NK 35	NK 36
DELAWARE	NK 32	NK 33	NK 34	NK 35
VIRGINIA	NK 31	NK 32	NK 33	NK 34
NORTH CAROLINA	NK 30	NK 31	NK 32	NK 33
SOUTH CAROLINA	NK 29	NK 30	NK 31	NK 32
GEORGIA	NK 28	NK 29	NK 30	NK 31
FLORIDA	NK 27	NK 28	NK 29	NK 30
ALABAMA	NK 26	NK 27	NK 28	NK 29
MISSISSIPPI	NK 25	NK 26	NK 27	NK 28
LOUISIANA	NK 24	NK 25	NK 26	NK 27
ARKANSAS	NK 23	NK 24	NK 25	NK 26
KENTUCKY	NK 22	NK 23	NK 24	NK 25
TENNESSEE	NK 21	NK 22	NK 23	NK 24
MICHIGAN	NK 20	NK 21	NK 22	NK 23
OHIO	NK 19	NK 20	NK 21	NK 22
PENNSYLVANIA	NK 18	NK 19	NK 20	NK 21
MARYLAND	NK 17	NK 18	NK 19	NK 20
DELAWARE	NK 16	NK 17	NK 18	NK 19
VIRGINIA	NK 15	NK 16	NK 17	NK 18
NORTH CAROLINA	NK 14	NK 15	NK 16	NK 17
SOUTH CAROLINA	NK 13	NK 14	NK 15	NK 16
GEORGIA	NK 12	NK 13	NK 14	NK 15
FLORIDA	NK 11	NK 12	NK 13	NK 14
ALABAMA	NK 10	NK 11	NK 12	NK 13
MISSISSIPPI	NK 9	NK 10	NK 11	NK 12
LOUISIANA	NK 8	NK 9	NK 10	NK 11
ARKANSAS	NK 7	NK 8	NK 9	NK 10
KENTUCKY	NK 6	NK 7	NK 8	NK 9
TENNESSEE	NK 5	NK 6	NK 7	NK 8
MICHIGAN	NK 4	NK 5	NK 6	NK 7
OHIO	NK 3	NK 4	NK 5	NK 6
PENNSYLVANIA	NK 2	NK 3	NK 4	NK 5
MARYLAND	NK 1	NK 2	NK 3	NK 4
DELAWARE	NK 0	NK 1	NK 2	NK 3

**RELIABILITY DIAGRAM**

Good Photography

TOWNSHIP OR RANGE LINE

LAND GRANT BOUNDARY

1. Large scale topographic maps, photogrammetric, 1952-53.

2. Stereocompiled from 1954-55 aerial photography.

3. Planimetry revised from 1954-55 aerial photography.

**SECTIONIZED TOWNSHIP**

6	5	4	3	2	1
7	8	9	10	11	12
18	17	16	15	14	13
19	20	21	22	23	24
30	29	28	27	26	25
31	32	33	34	35	36

OCT 13 2003

OFFICE COPY  
LIBRARY USE ONLY

64050  
\$250  
.64