

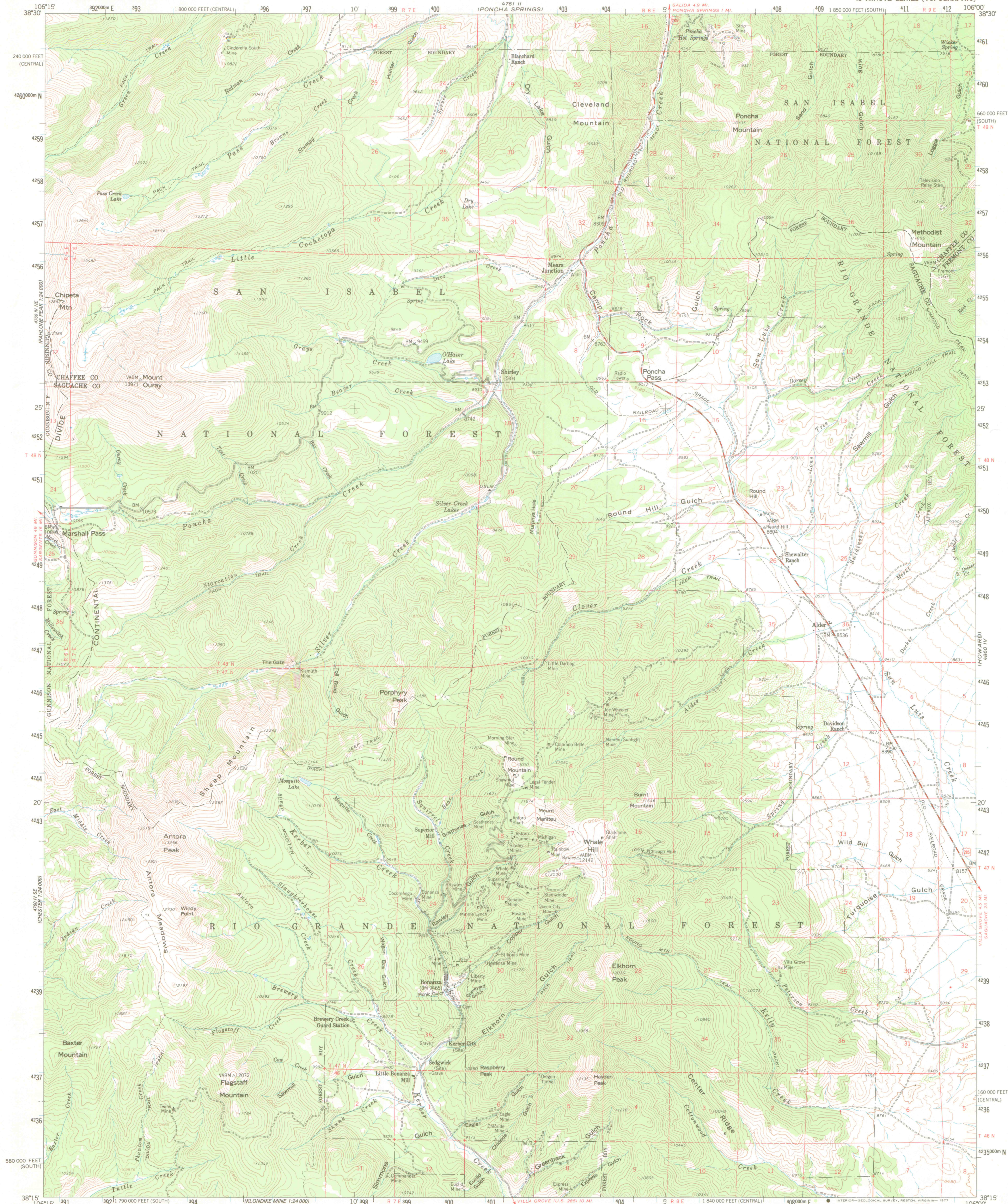
49° 11' N
106° 15' W

UNITED STATES
DEPARTMENT OF THE INTERIOR
GEOLOGICAL SURVEY

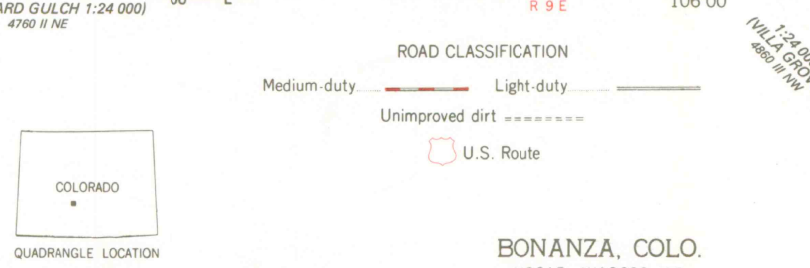
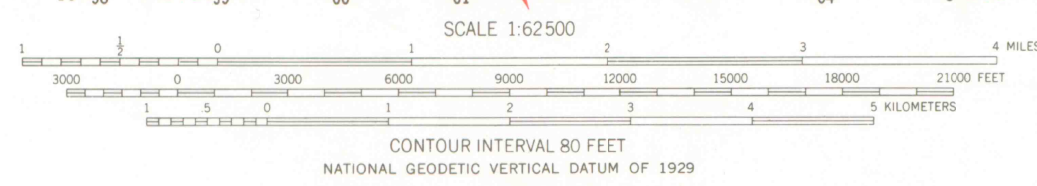
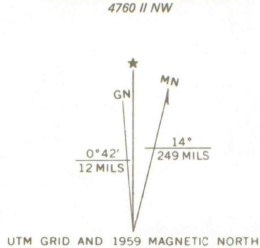
LIBRARY
COLORADO SCHOOL OF MINES
GOLDEN, COLORADO

BONANZA QUADRANGLE
COLORADO

48° 11' N
106° 15' W



Mapped, edited, and published by the Geological Survey
Control by USGS and USC&GS
Topography from aerial photographs by photogrammetric methods
Aerial photographs taken 1954 Field check 1959
Polyconic projection 1927 North American datum
10,000 foot grid based on Colorado coordinate system,
south and central zones
1000-meter Universal Transverse Mercator grid ticks,
zone 13, shown in blue
Dashed land lines indicate approximate locations
Land lines omitted in T. 48 N. Rs. 7 and 9 E. and in parts
of Ts. 46 and 49 N. Rs. 6 and 7 E. because of insufficient data



THIS MAP COMPLIES WITH NATIONAL MAP ACCURACY STANDARDS
FOR SALE BY U. S. GEOLOGICAL SURVEY, DENVER, COLORADO 80225, OR RESTON, VIRGINIA 22092
A FOLDER DESCRIBING TOPOGRAPHIC MAPS AND SYMBOLS IS AVAILABLE ON REQUEST

BONANZA, COLO.
N3815-W10600/15
1959
AMS 4760 I-SERIES V777

LIBRARY USE ONLY

G 3701
C222
s62
U5

OFFICE COPY