

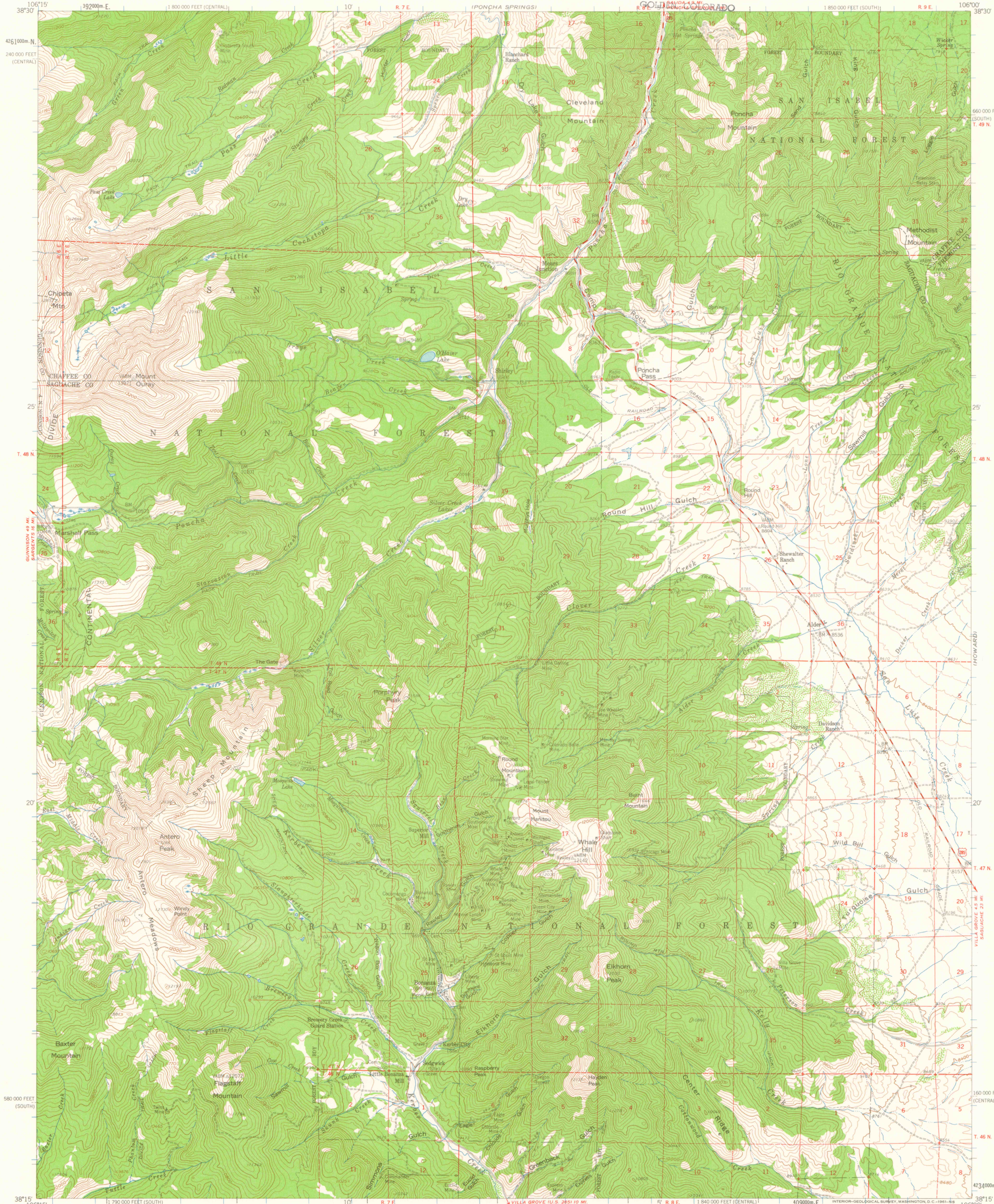
(GARFIELD)

UNITED STATES
DEPARTMENT OF THE INTERIOR
GEOLOGICAL SURVEY

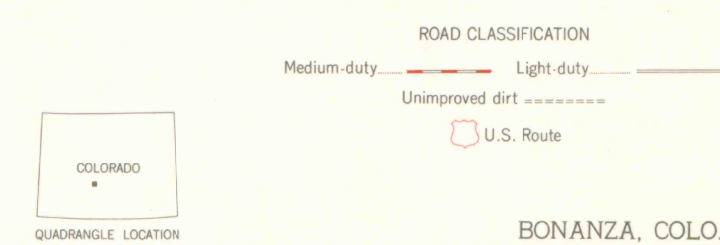
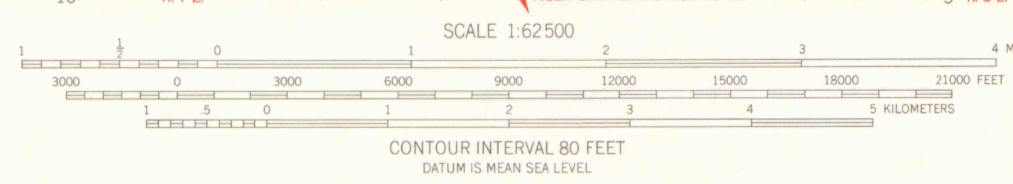
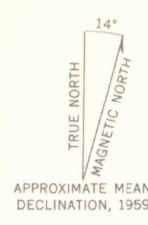
LIBRARY
COLORADO SCHOOL OF MINE

BONANZA QUADRANGLE
COLORADO
15 MINUTE SERIES (TOPOGRAPHIC)

(CAMERON MTN)



Mapped, edited, and published by the Geological Survey
Control by USGS and USC&GS
Topography from aerial photographs by photogrammetric methods
Aerial photographs taken 1954. Field check 1959
Polyconic projection, 1927 North American datum
10,000-foot grid based on Colorado coordinate system,
south and central zones
1000 meter Universal Transverse Mercator grid ticks,
zone 13, shown in blue
Dashed land lines indicate approximate locations
Land lines omitted in T. 48 N., Rs. 7 and 9 E. and in parts
of Ts. 46 and 49 N., Rs. 6 and 7 E. because of insufficient data



THIS MAP COMPLIES WITH NATIONAL MAP ACCURACY STANDARDS
FOR SALE BY U. S. GEOLOGICAL SURVEY, DENVER 25, COLORADO OR WASHINGTON 25, D. C.
A FOLDER DESCRIBING TOPOGRAPHIC MAPS AND SYMBOLS IS AVAILABLE ON REQUEST

BONANZA, COLO.
N3815-W10600/15
1959

LIBRARY USE ONLY
G
3701
C222
S62
U5
OFFICE COPY